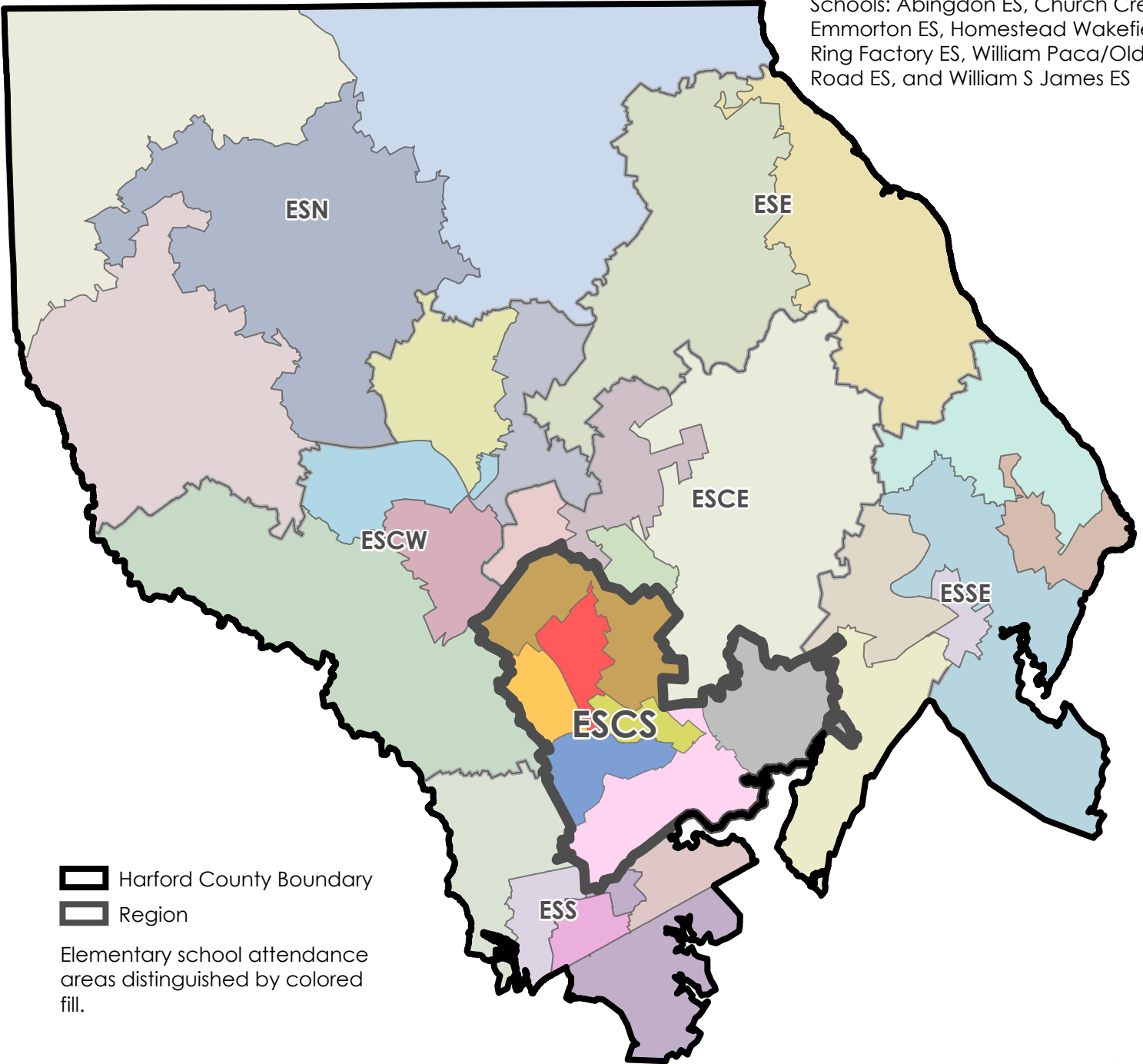


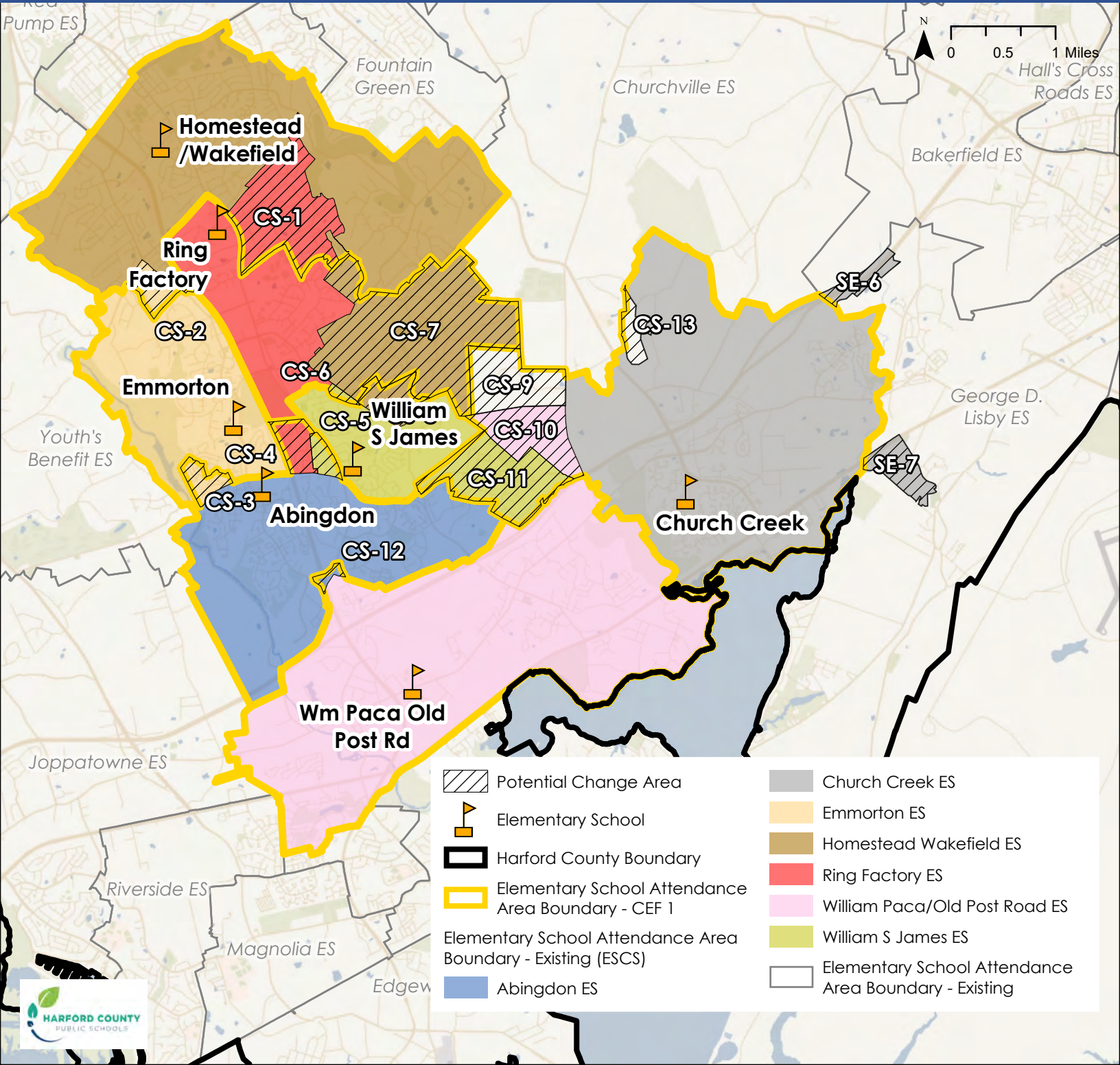
Community Education Forum (CEF) Region Elementary School Center South (ESCS)

Schools: Abingdon ES, Church Creek ES, Emmorton ES, Homestead Wakefield ES, Ring Factory ES, William Paca/Old Post Road ES, and William S James ES






District Overview - CEF 1




Elementary School Center South (ESCS)



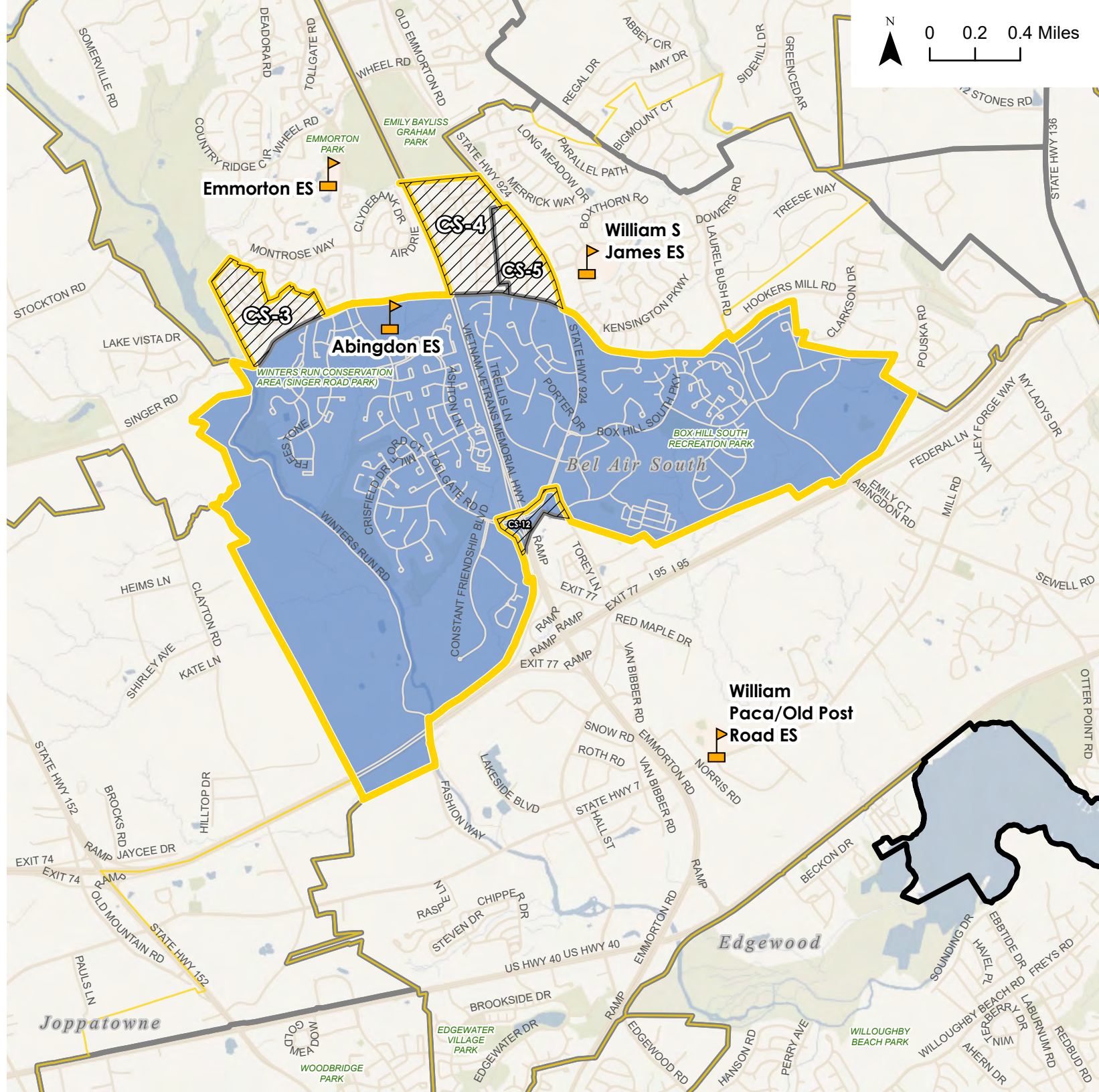
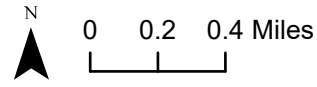
CEF 1 - Abingdon ES

-  Elementary School
-  District Boundary
-  Elementary School Attendance Area Boundary - CEF 1

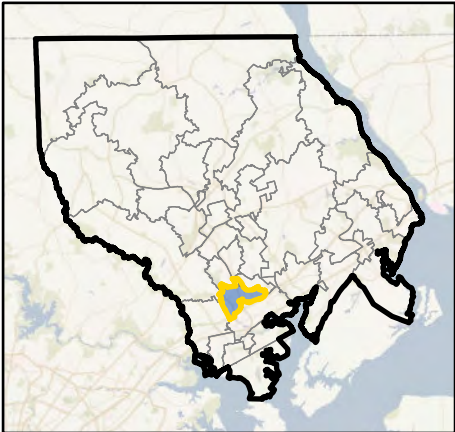
Elementary School Attendance Area Boundary - Existing

-  Abingdon ES
-  Elementary School Attendance Area Boundary - Existing (Outline)
-  Potential Change Area


Potential Change Areas:
 CS-3: From Emmorton ES to Abingdon ES
 CS-4: From Ring Factory ES to Abingdon ES
 CS-5: From William S James ES to Abingdon ES
 CS-12: From Abingdon ES to William Paca/Old Post Road ES




Overview Map

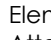


CEF 1 - Church Creek ES


 Elementary School

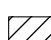
 District Boundary

 Elementary School Attendance Area Boundary - Existing

 Elementary School Attendance Area Boundary - Existing

 Church Creek ES

 Elementary School Attendance Area Boundary - Existing (Outline)

 Potential Change Area

Potential Change Areas:

SE-6: From Church Creek ES to George D. Lisby ES

SE-7: From Church Creek ES to George D. Lisby ES

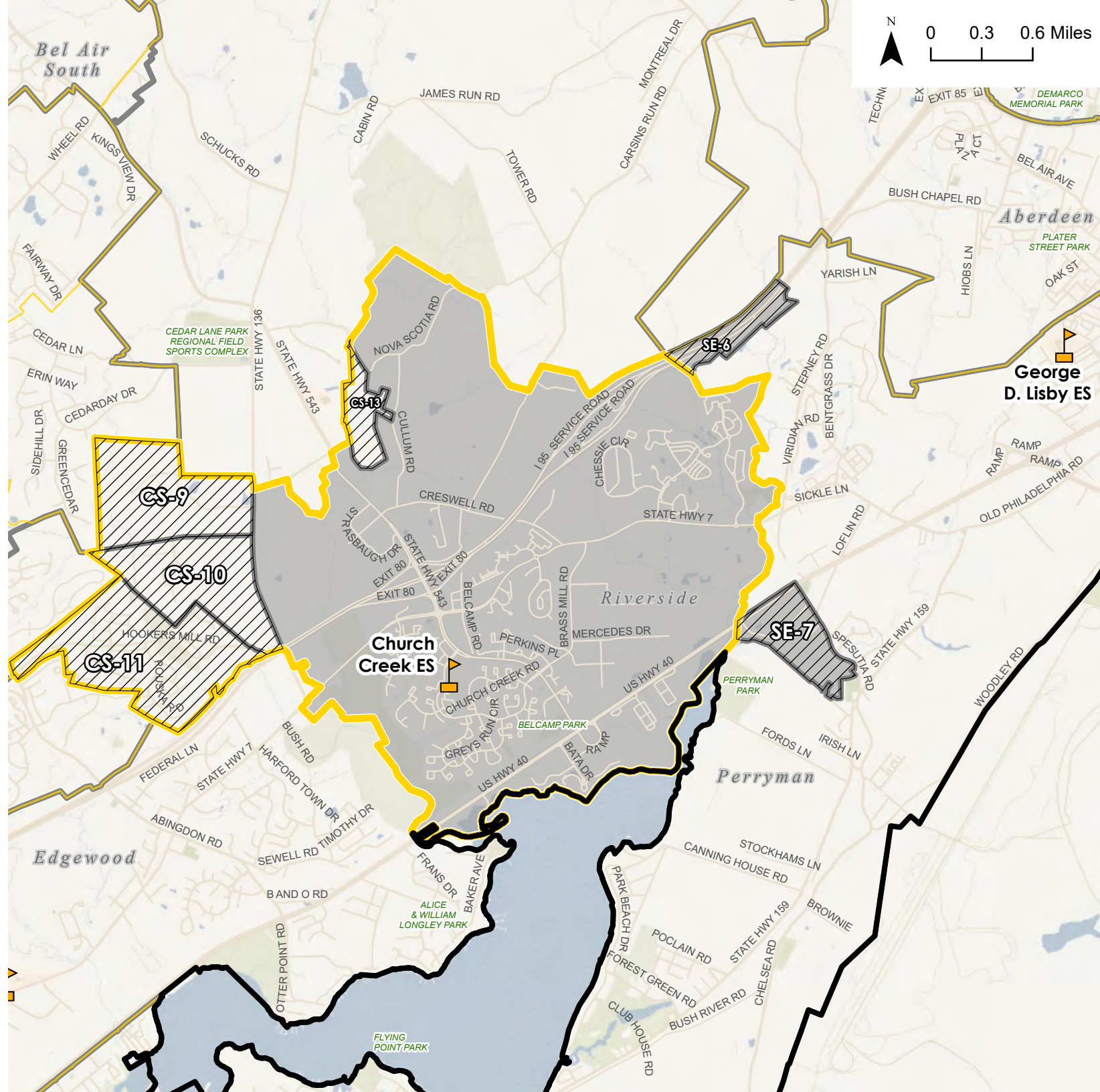
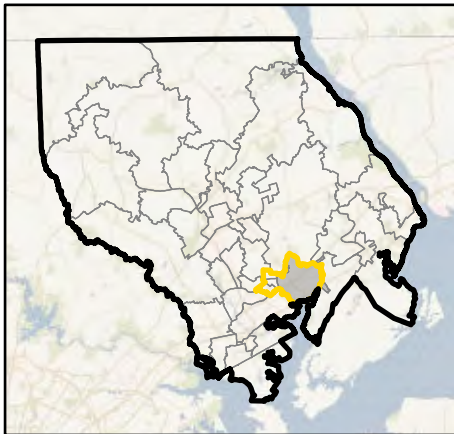
CS-9: From Churchville ES to Church Creek ES

CS-10: From William Paca/Old Post Road ES to Church Creek ES





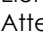



CS-11: From William S James ES to Church Creek ES

CS-13: From Churchville ES to Church Creek ES

Overview Map

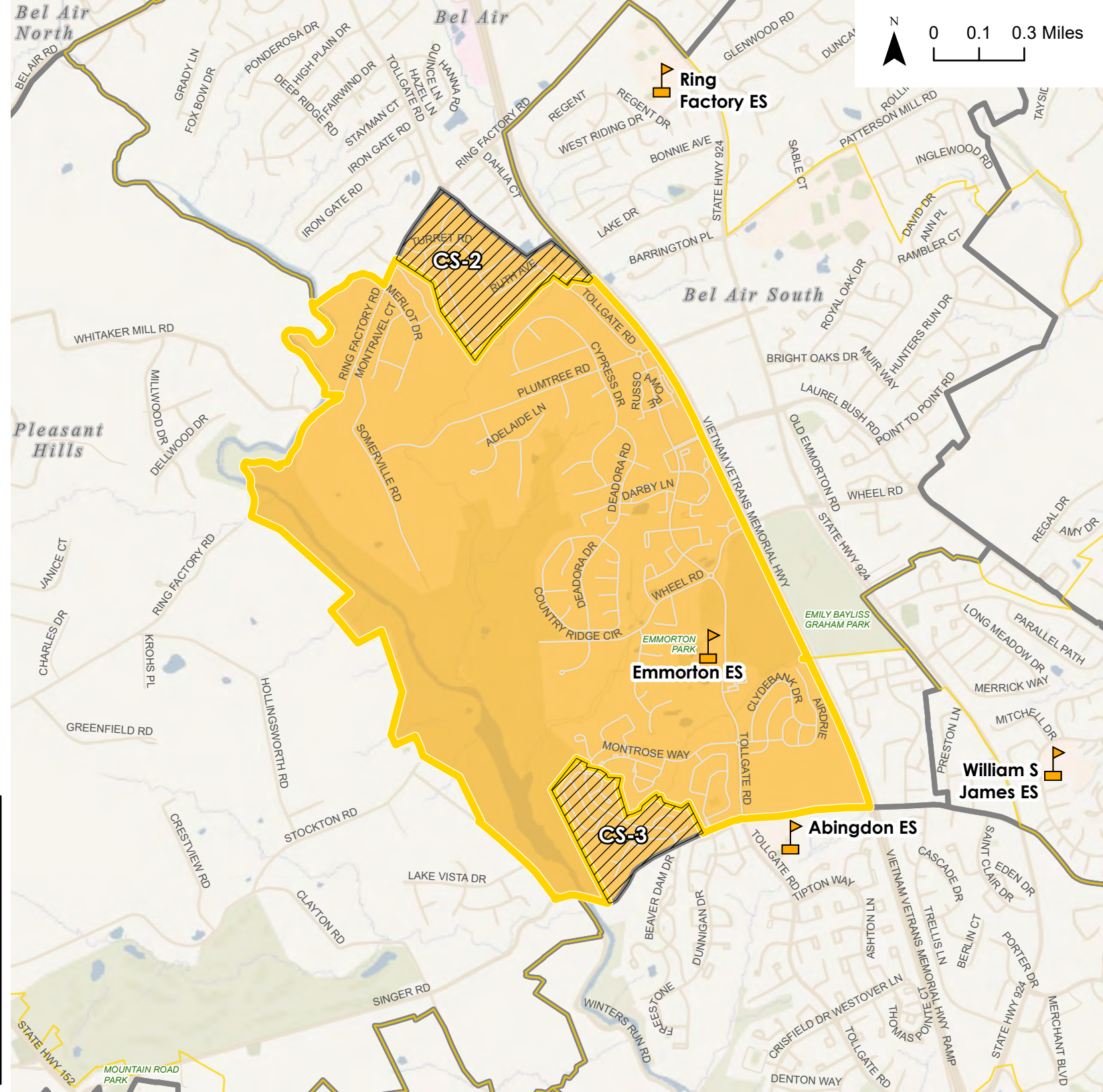


CEF 1 - Emmorton ES





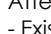


-  Elementary School
-  District Boundary
-  Elementary School Attendance Area Boundary - Existing
-  Elementary School Attendance Area Boundary - CEF 1
-  Elementary School Attendance Area Boundary - Existing (Outline)
-  Emmorton ES
-  Elementary School Attendance Area Boundary - Existing (Outline)
-  Potential Change Area

Potential Change Areas:
 CS-2: From Emmorton ES to Homestead Wakefield ES
 CS-3: From Emmorton ES to Abingdon ES

Overview Map

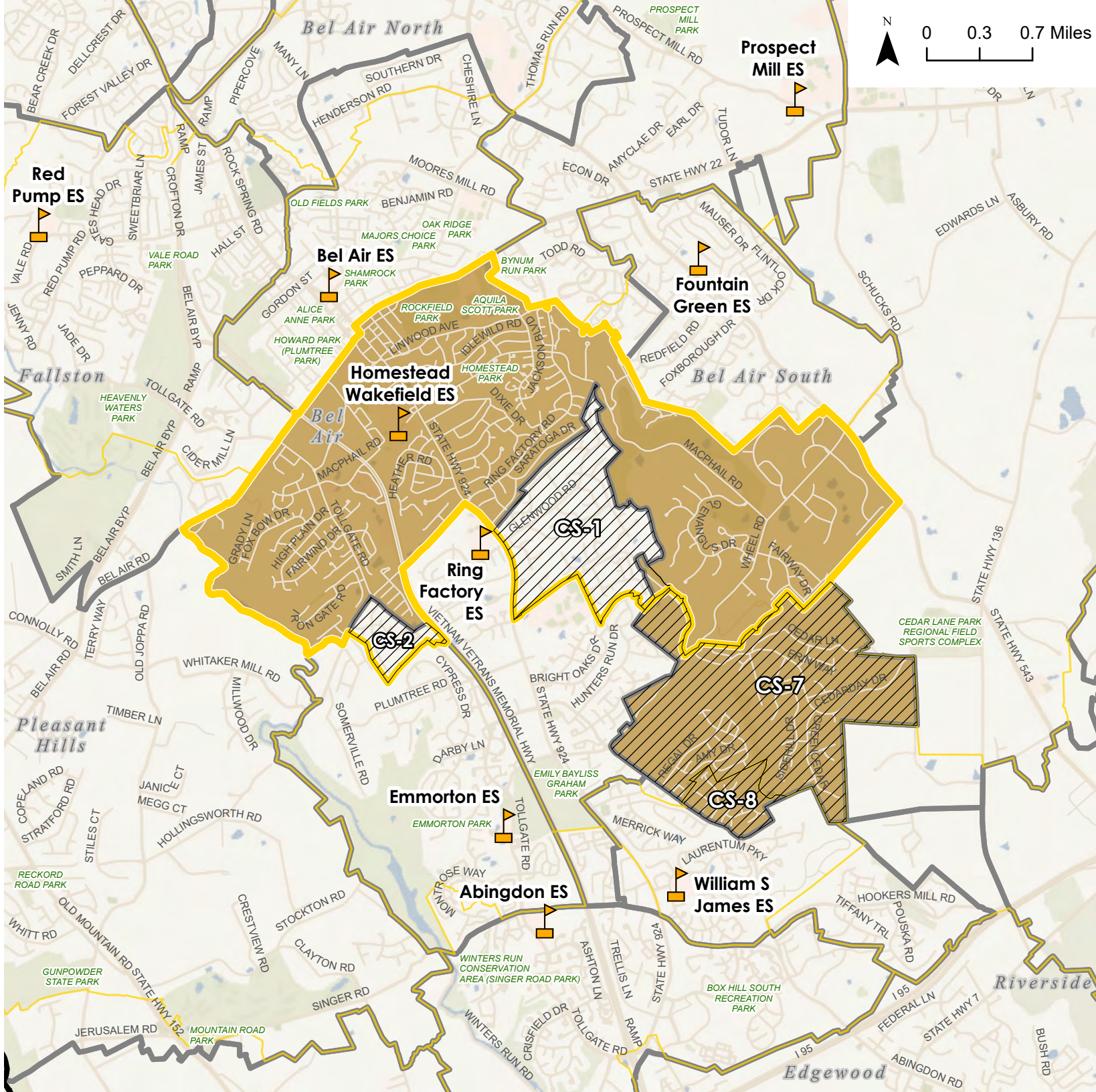
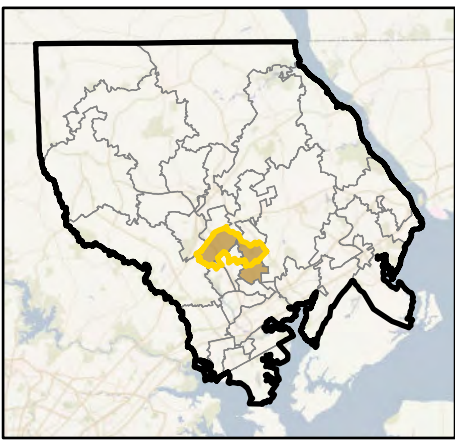


CEF 1 - Homestead Wakefield ES


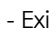

-  Elementary School
-  District Boundary
-  Elementary School Attendance Area Boundary - CEF 1
-  Elementary School Attendance Area Boundary - Existing
-  Homestead Wakefield ES
-  Elementary School Attendance Area Boundary - Existing (Outline)
-  Potential Change Area

Potential Change Areas:
 CS-1: From Ring Factory ES to Homestead Wakefield ES
 CS-2: From Emmorton ES to Homestead Wakefield ES
 CS-7: From Homestead Wakefield ES to Ring Factory ES
 CS-8: From Homestead Wakefield ES to William S James ES

Overview Map

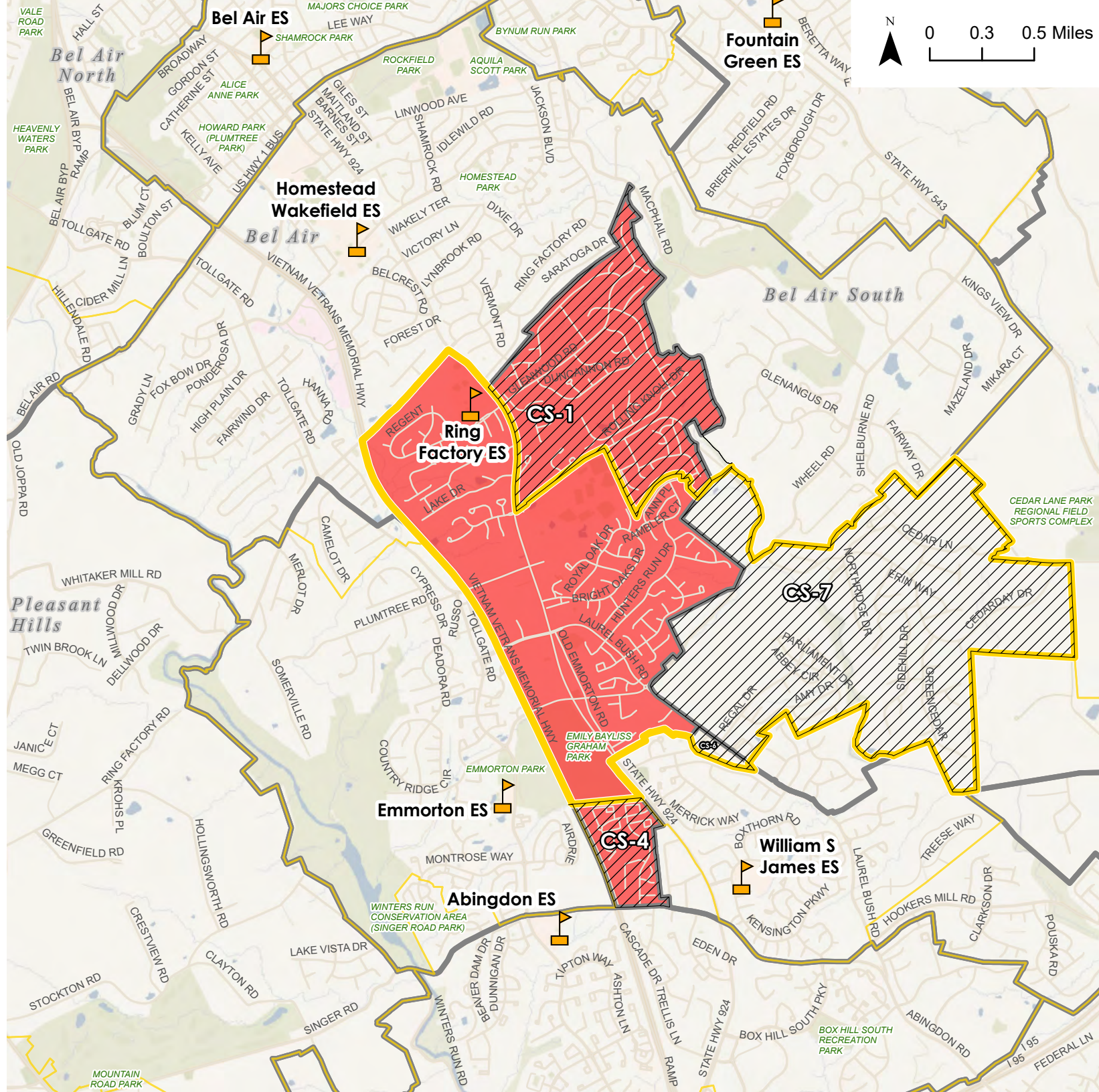
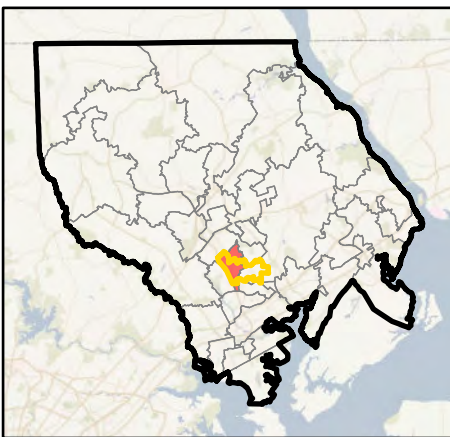


CEF 1 - Ring Factory ES






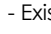

-  Elementary School
-  District Boundary
-  Elementary School Attendance Area Boundary - CEF 1
-  Elementary School Attendance Area Boundary - Existing
-  Ring Factory ES
-  Elementary School Attendance Area Boundary - Existing (Outline)
-  Potential Change Area

Potential Change Areas:
 CS-1: From Ring Factory ES to Homestead Wakefield ES
 CS-4: From Ring Factory ES to Abingdon ES
 CS-6: From William S James ES to Ring Factory ES
 CS-7: From Homestead Wakefield ES to Ring Factory ES

Overview Map

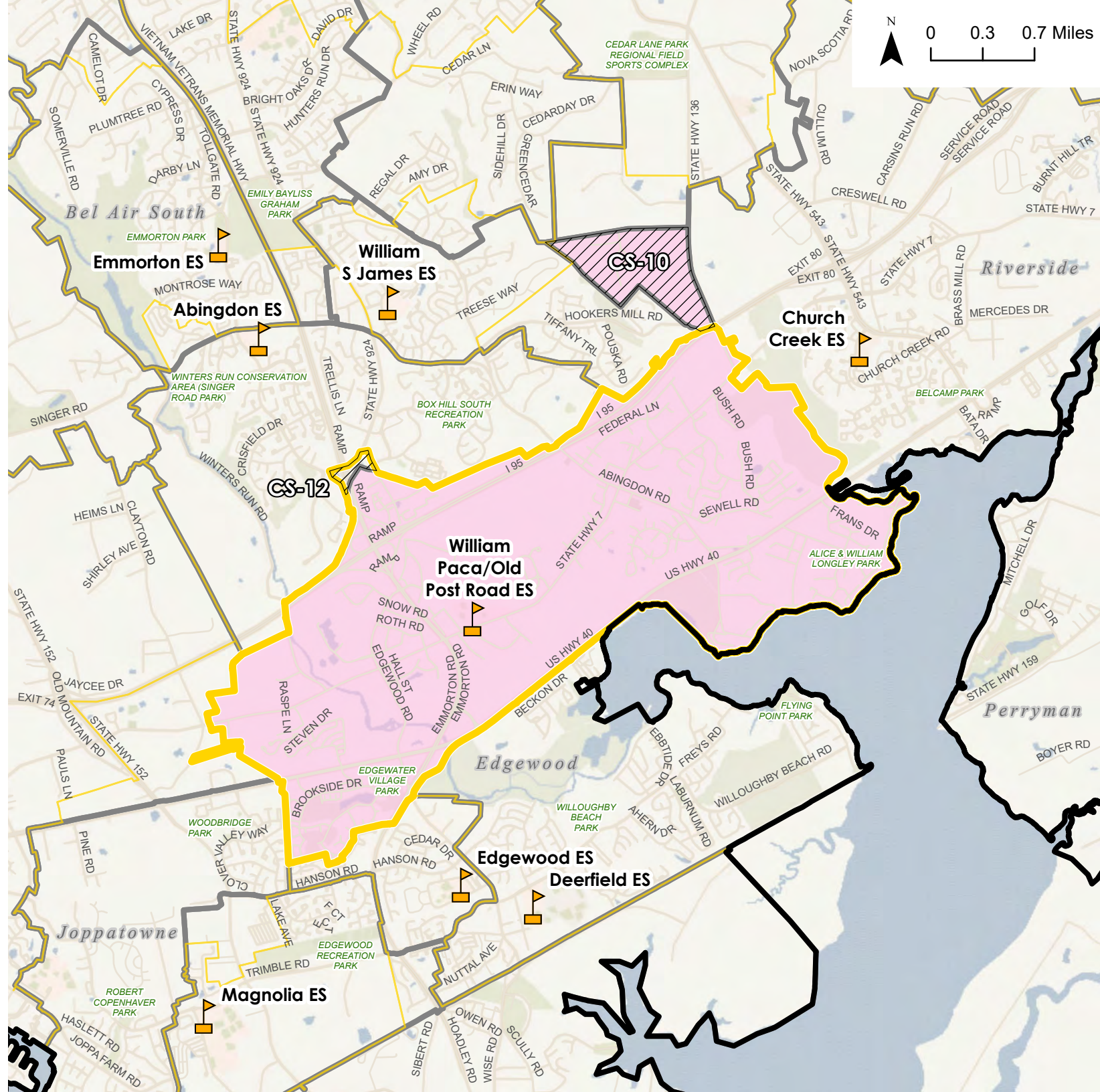
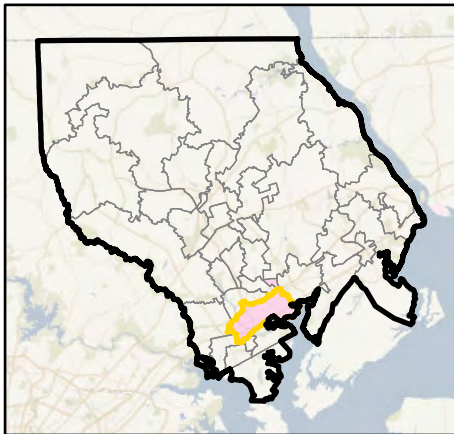


CEF 1 - William Paca/Old Post Road ES







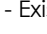
-  Elementary School
-  District Boundary
-  Elementary School Attendance Area Boundary - CEF 1
-  Elementary School Attendance Area Boundary - Existing
-  William Paca/Old Post Road ES
-  Elementary School Attendance Area Boundary - Existing (Outline)
-  Potential Change Area

Potential Change Areas:
 CS-10: From William Paca/Old Post Road ES to Church Creek ES
 CS-12: From Abingdon ES to William Paca/Old Post Road ES

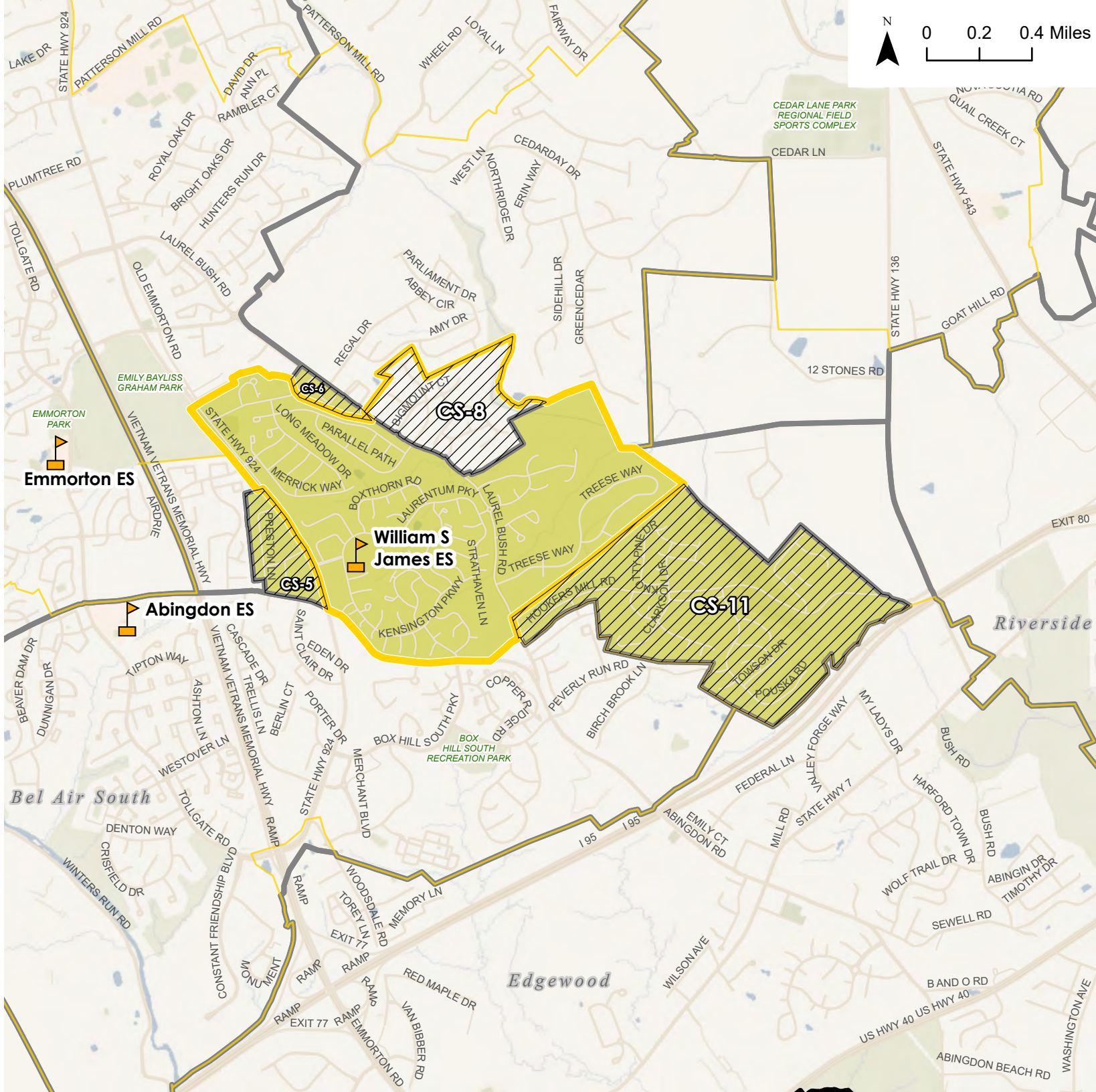
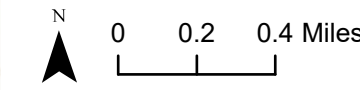
Overview Map



CEF 1 - William S James ES

-  Elementary School
-  District Boundary
-  Elementary School Attendance Area Boundary - CEF 1
-  Elementary School Attendance Area Boundary - Existing
-  William S James ES
-  Elementary School Attendance Area Boundary - Existing (Outline)
-  Potential Change Area

Potential Change Areas:
 CS-5: From William S James ES to Abingdon ES
 CS-6: From William S James ES to Ring Factory ES
 CS-8: From Homestead Wakefield ES to William S James ES
 CS-11: From William S James ES to Church Creek ES



Overview Map

