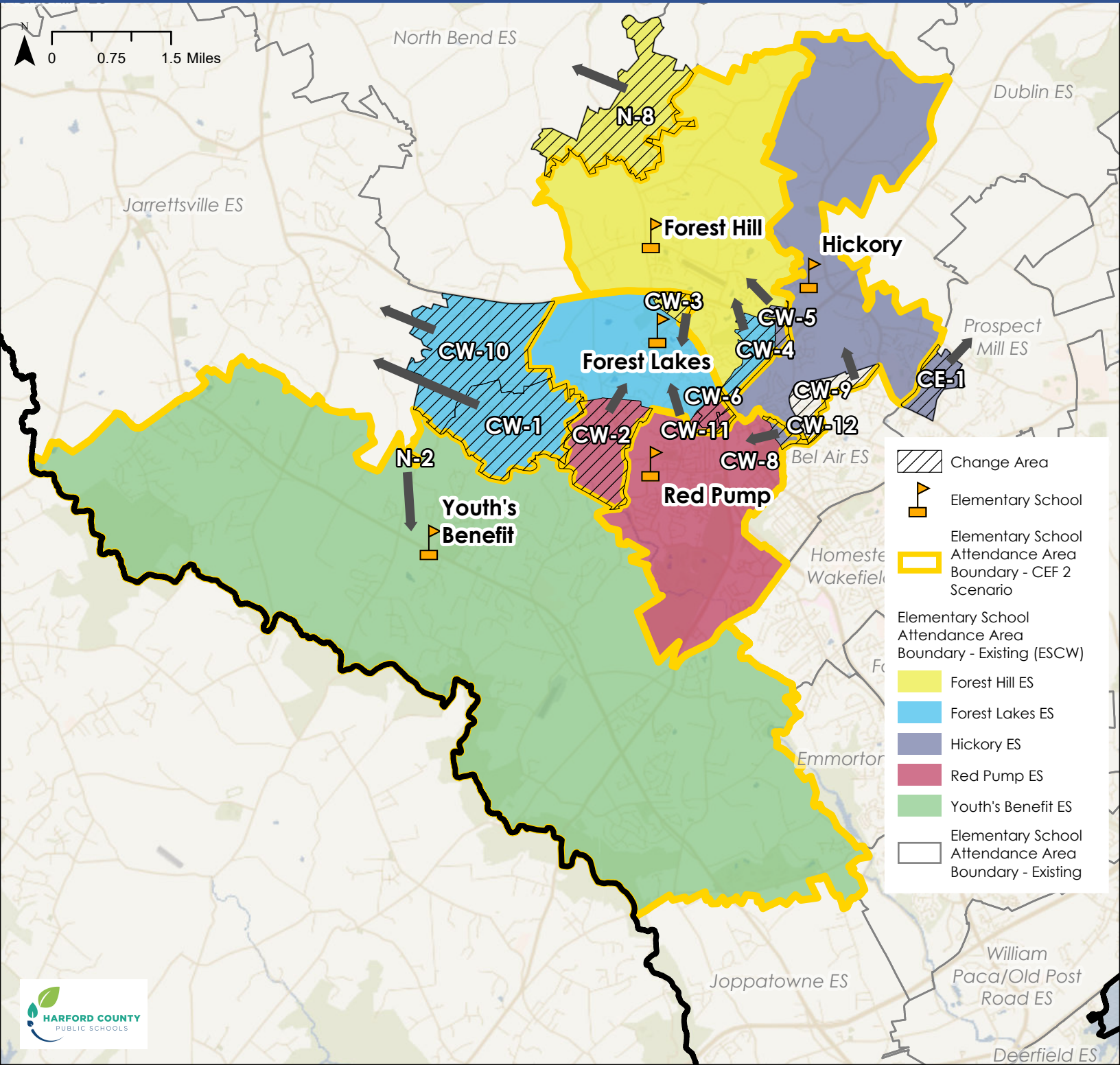



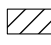





# District Overview - CEF 2 Elementary School Scenario

## Elementary School Center West (ESCW)

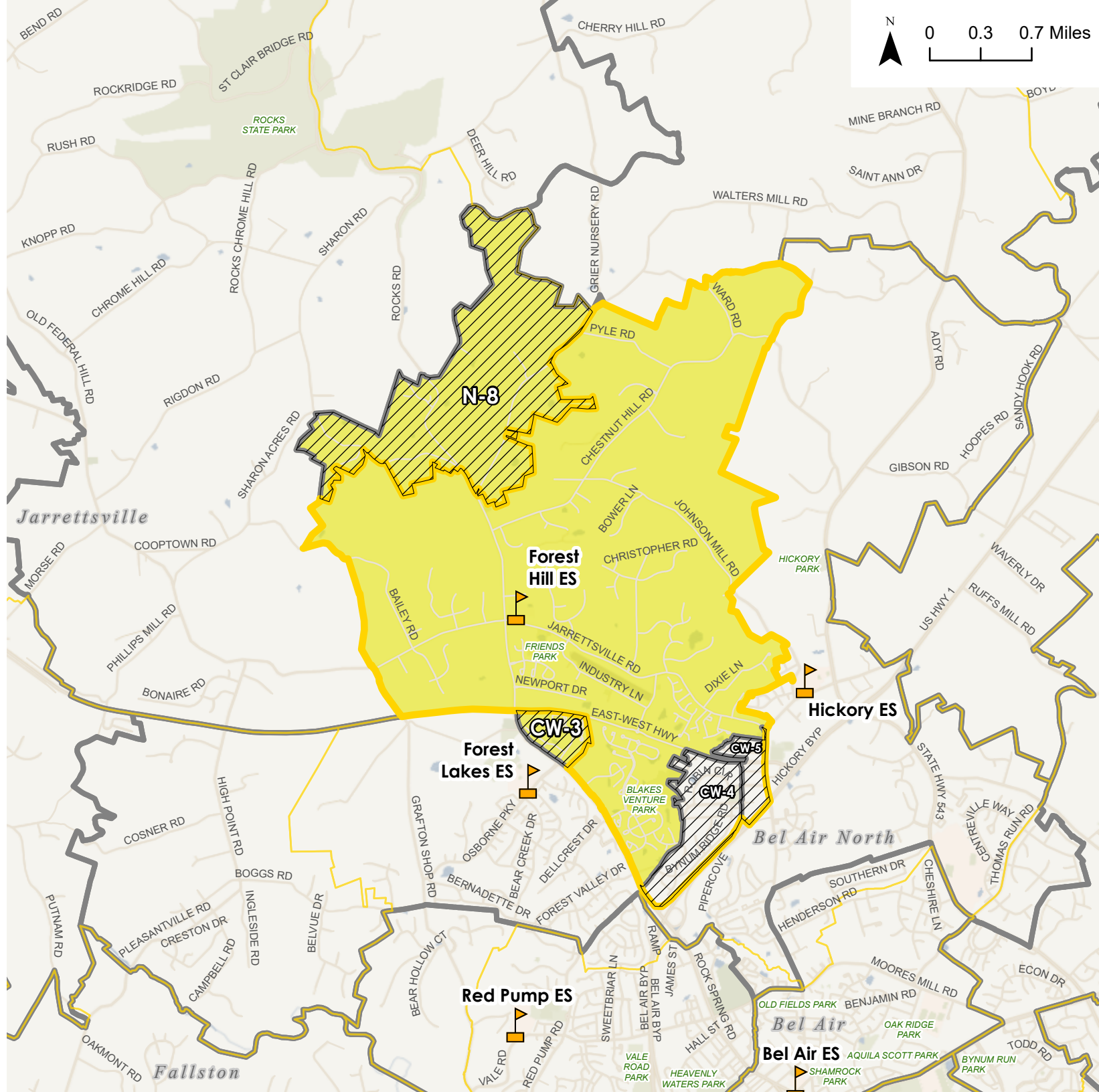
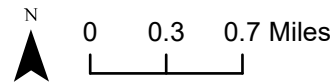


# CEF 2 Elementary School Scenario - Forest Hill ES

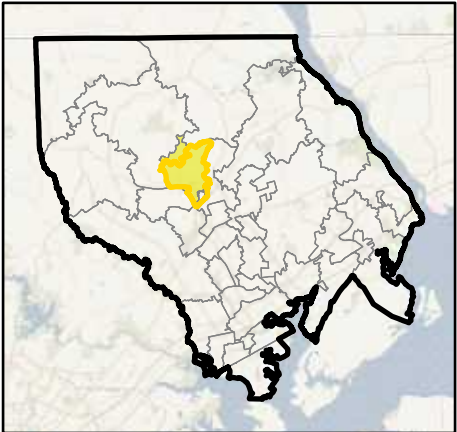
-  Elementary School
-  District Boundary
-  Advisory Team Working Elementary School Boundary for Forest Hill ES
-  Potential Change Area
- Current Configuration - Elementary Schools**
-  Forest Hill ES Current Attendance Area
-  Elementary School Attendance Area
-  Boundary Outline - Current Attendance Area

## Potential Change Areas:




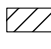



- N-8: From Forest Hill ES to North Bend ES
- CW-3: From Forest Hill ES to Forest Lakes ES
- CW-4: From Forest Lakes ES to Forest Hill ES
- CW-5: From Hickory ES to Forest Hill ES



## Overview Map

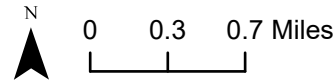
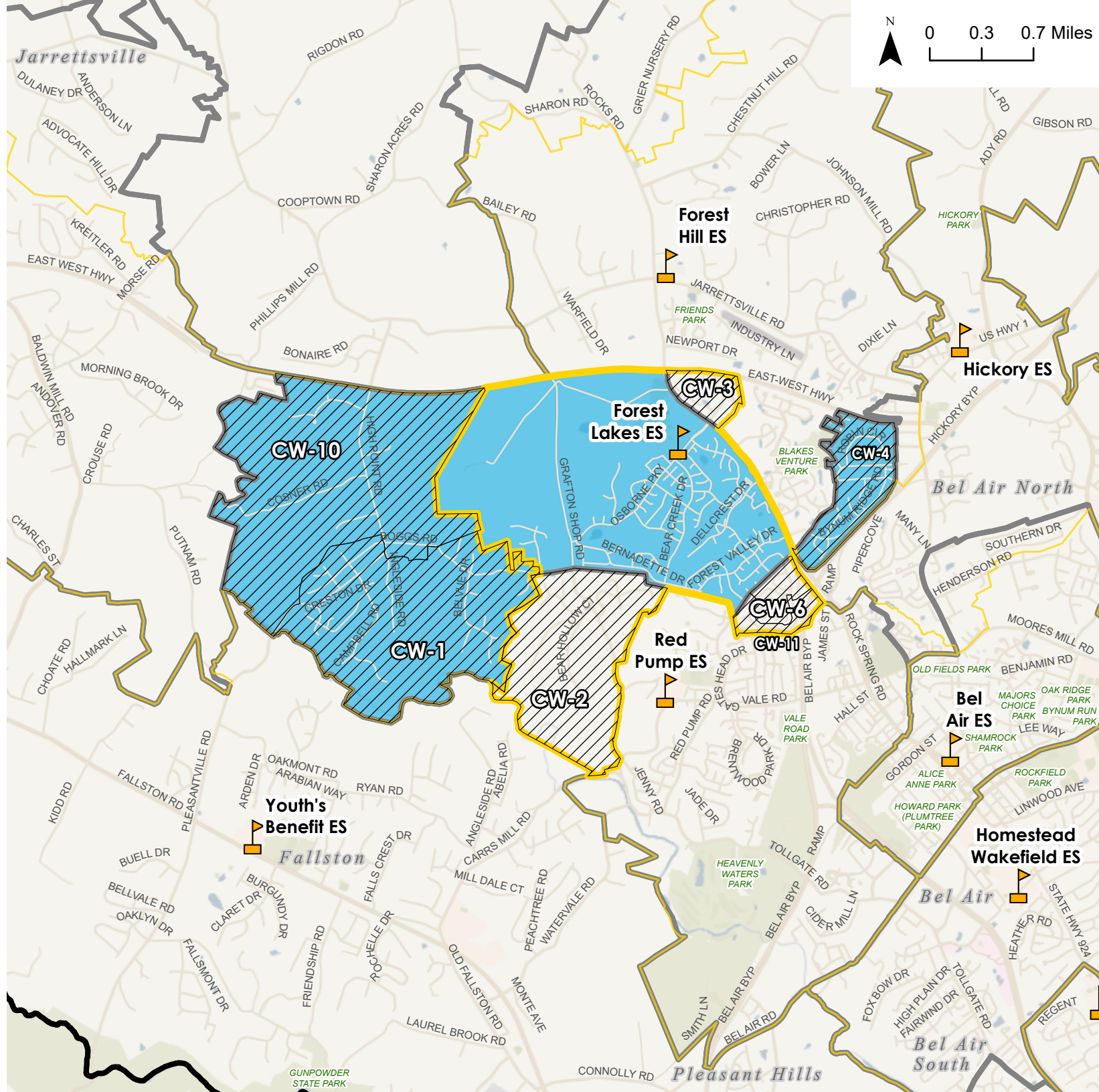
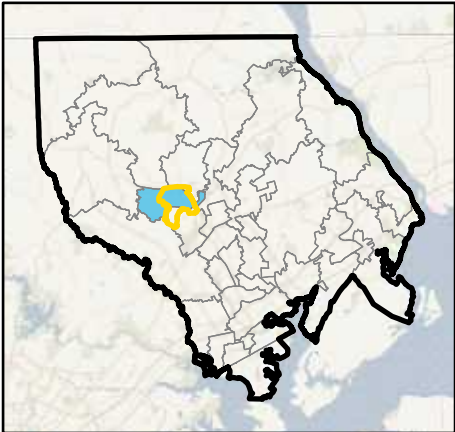


# CEF 2 Elementary School Scenario - Forest Lakes ES




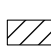



-  Elementary School
-  District Boundary
-  Advisory Team Working Elementary School Boundary for Forest Lakes ES
-  Potential Change Area
- Current Configuration - Elementary Schools**
-  Forest Lakes ES Current Attendance Area
-  Elementary School Attendance Area
-  Boundary Outline - Current Attendance Area

- Potential Change Areas:
- CW-4: From Forest Lakes ES to Forest Hill ES
  - CW-1: From Forest Lakes ES to Jarrettsville ES
  - CW-10: From Forest Lakes ES to Jarrettsville ES
  - CW-2: From Red Pump ES to Forest Lakes ES
  - CW-3: From Forest Hill ES to Forest Lakes ES
  - CW-6: From Red Pump ES to Forest Lakes ES
  - CW-11: From Red Pump ES to Forest Lakes ES

## Overview Map

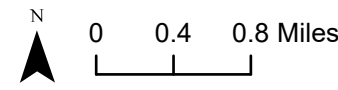
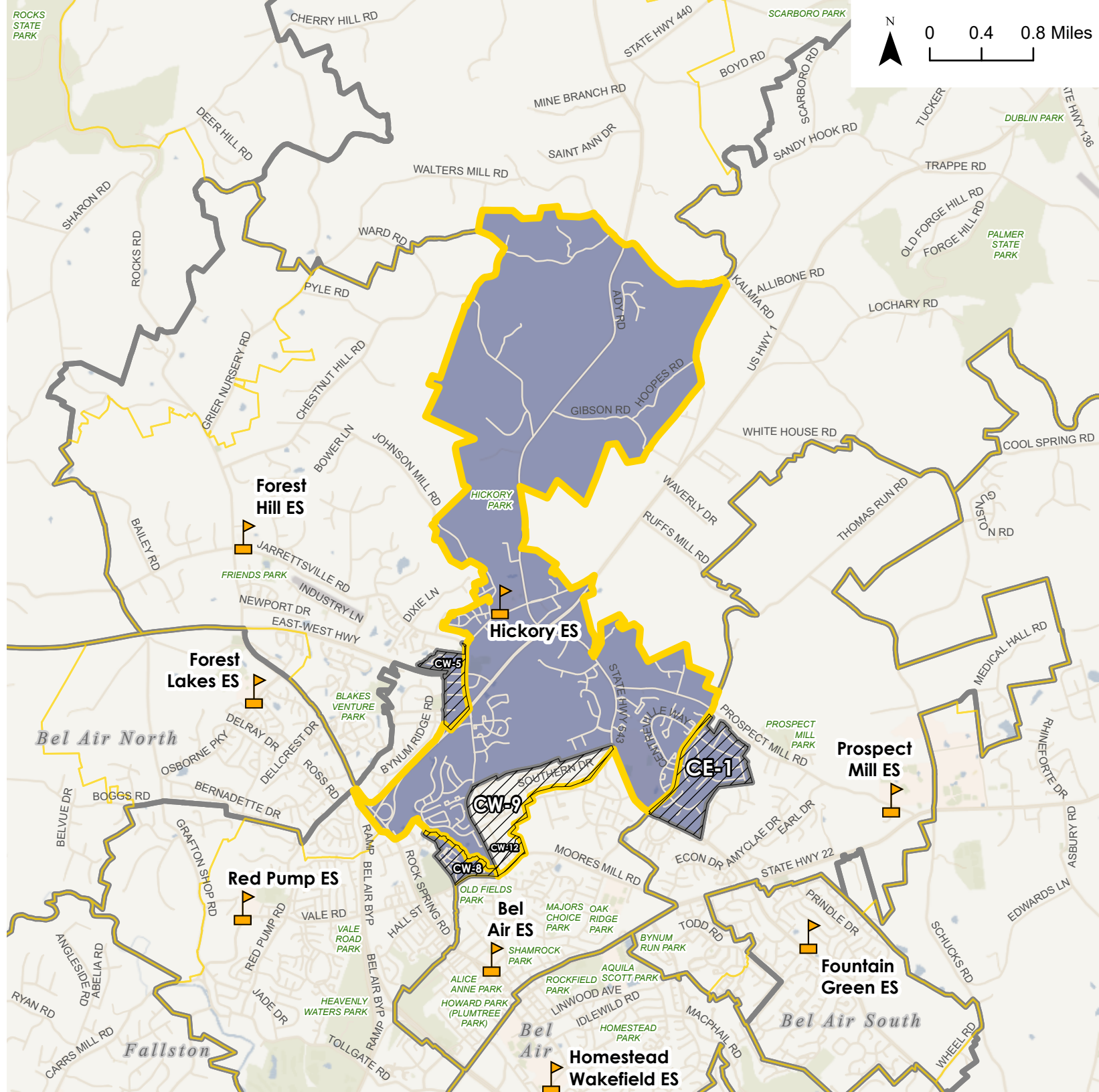
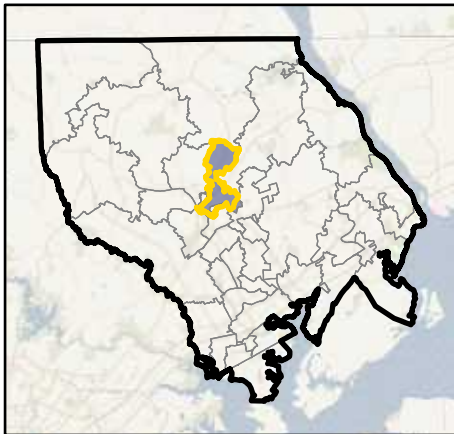


# CEF 2 Elementary School Scenario - Hickory ES




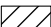



-  Elementary School
-  District Boundary
-  Advisory Team Working Elementary School Boundary for Hickory ES
-  Potential Change Area
- Current Configuration - Elementary Schools**
-  Hickory ES Current Attendance Area
-  Elementary School Attendance Area
-  Boundary Outline - Current Attendance Area

Potential Change Areas:  
 CW-5: From Hickory ES to Forest Hill ES  
 CW-8: From Hickory ES to Red Pump ES  
 CE-1: From Hickory ES to Prospect Mill ES  
 CW-9: From Bel Air ES to Hickory ES  
 CW-12: From Bel Air ES to Hickory ES

## Overview Map

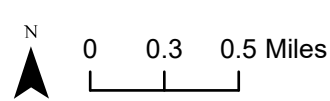
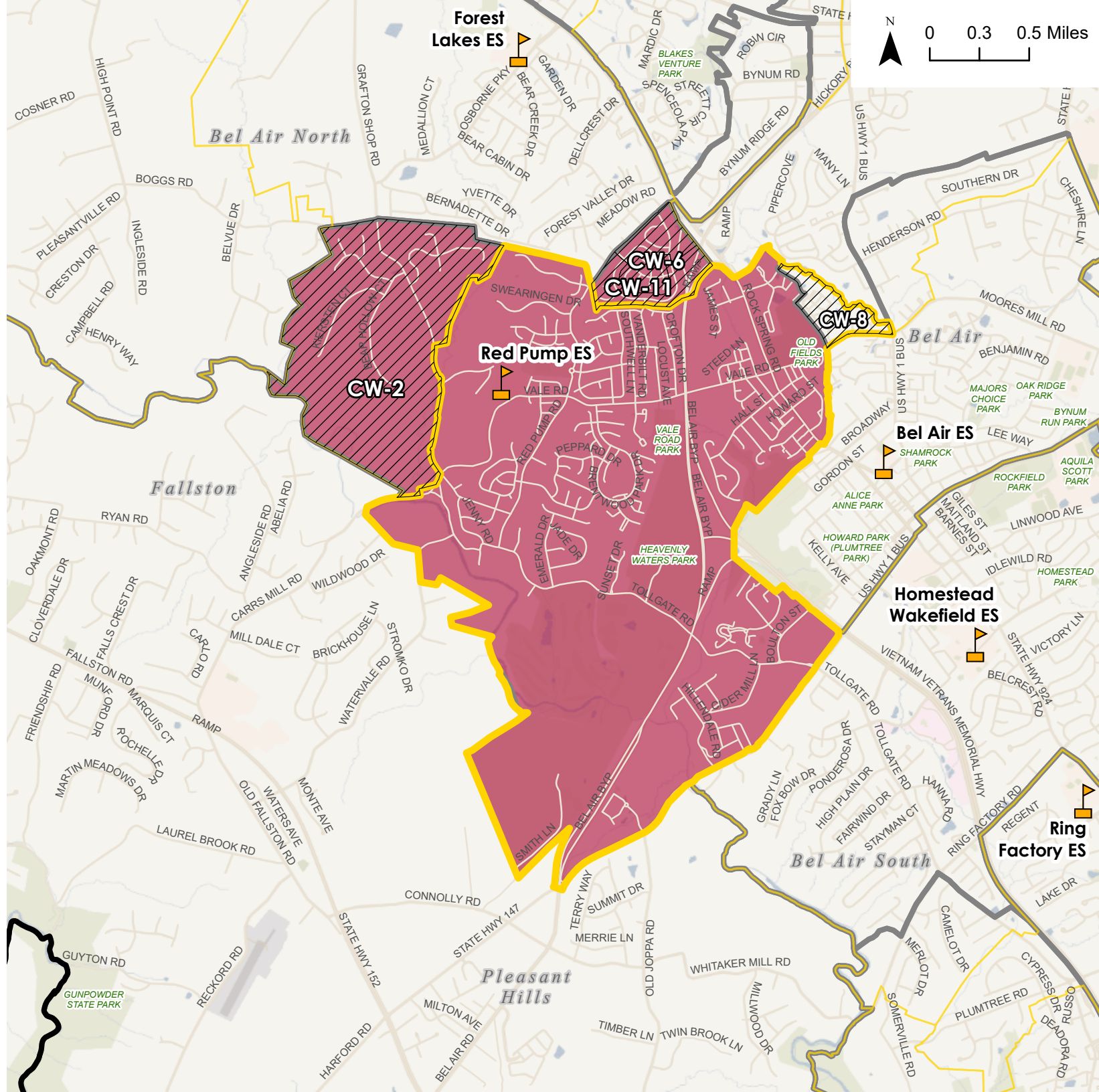
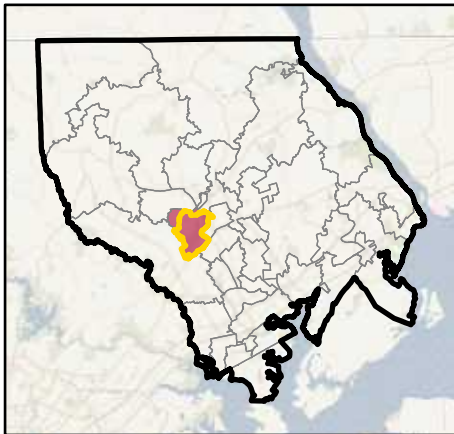


# CEF 2 Elementary School Scenario - Red Pump ES





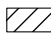



-  Elementary School
-  District Boundary
-  Advisory Team Working Elementary School Boundary for Red Pump ES
-  Potential Change Area
- Current Configuration - Elementary Schools**
-  Red Pump ES Current Attendance Area
-  Elementary School Attendance Area
-  Boundary Outline - Current Attendance Area

Potential Change Areas:  
 CW-2: From Red Pump ES to Forest Lakes ES  
 CW-6: From Red Pump ES to Forest Lakes ES  
 CW-11: From Red Pump ES to Forest Lakes ES  
 CW-8: From Hickory ES to Red Pump ES

## Overview Map



# CEF 2 Elementary School Scenario - Youth's Benefit ES

-  Elementary School
  -  District Boundary
  -  Advisory Team
  -  Working Elementary School Boundary for Youth's Benefit ES
  -  Potential Change Area
- Current Configuration - Elementary Schools**
-  Youth's Benefit ES Current Attendance Area
  -  Elementary School Attendance Area
  -  Boundary Outline - Current Attendance Area

Potential Change Areas:  
 N-2: From Youth's Benefit ES to Jarrettsville ES

## Overview Map

