

Welcome!



**Balancing Enrollment Process
Advisory Team Meeting 5
April 28, 2021**

Intentions

1. Participants review CEF #1 outputs and discuss takeaways.
2. Participants discuss refinements to the elementary school change options.
3. Participants consider forecast data and provide input to initial balancing enrollment options for middle and high schools.
4. Participants leave with clear next steps.

Agenda

- Session Preview, CEF1 Review (30 min)
- Considering Changes Breakout (110 min)
 - Group 1: N+E, CW, CE
 - Group 2: CS, S, SE
 - Group 3: Middle & High
- Wrap Up & Next Steps (10 min)



Advisory Team Session Norms & Mindsets



Norms & Mindsets:	Looks like...
1. Keep the needs of students at the center of this work.	<ul style="list-style-type: none">● Asking what's best for children● Helping refocus conversations around students and their future
2. Be fully present.	<ul style="list-style-type: none">● Monotasking with your focus on this session● Minimizing technology distractions● Engaging by computer with video for full participation
3. Respect one another, our time frames, our shared airspace, and our process.	<ul style="list-style-type: none">● Monitoring your own talk time● Speaking your truth and speaking for yourself● Being succinct and listening to learn and understand● Assuming colleagues' positive intent and equal effort
4. Stay in a solution mindset and remember that we are all in this together.	<ul style="list-style-type: none">● Engaging with generosity of spirit● Asking "what if" and considering new ways of doing things
5. Remember! This is a PROCESS.	<ul style="list-style-type: none">● Being with the discomfort of not having all the answers.● Sometimes there will be more questions than answers

Virtual Norms...

Own your virtual engagement:

1. Turn your video **on** and mute yourself when you're not speaking.
2. Make sure your name is visible in your video box.
3. Use the chat for technical difficulties and accessing links.
4. Don't be afraid to say "Sorry, I missed that..." or "Could someone clarify what we're doing..."
5. Use the chat to announce if you need to step away from the meeting.
6. Allow for humanity (family, roommates, furry co-workers)

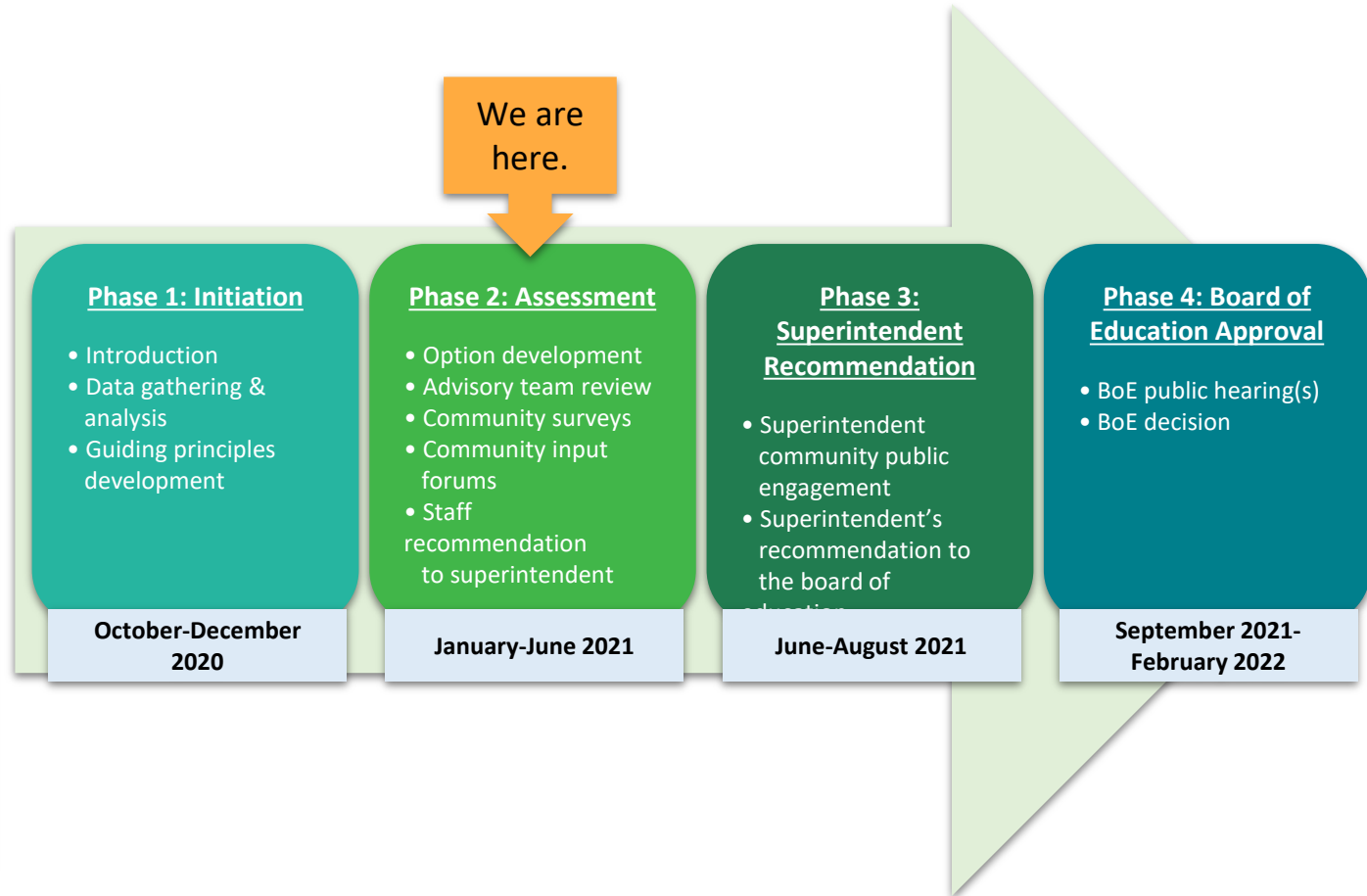
Purpose of the BEP (Why?)

To ensure HCPS schools and programs maintain capacity utilization levels that are beneficial to all students, while also ensuring the sustainable allocation of district resources



What is the BEP?

A multi-month, highly structured approach to data analysis & stakeholder engagement that will result in informed, relevant plans for Harford County Public Schools



Timeline of Key Meetings & Events

January	February	March	April	May	June
Executive Leadership Team Meeting 1 WHAT: Prepare for A-Team meetings	Executive Leadership Team Meeting 2 WHAT: Debrief A-Team meeting; Spring board proposal	Advisory Team Meeting 3 (3/10/21) WHAT: Options redevelopment, prep for CIF1	Executive Leadership Team Meeting 5 WHAT: CIF1 review, options implications	Executive Leadership Team Meeting 6 WHAT: Process check, options check, prep for CIF2	Community Input Forum 2 (6/2/21) WHAT: Final options review & feedback
Process Orientation WHAT: Asynchronous process overview	Advisory Team Meeting 2 (2/10/21) WHAT: Springboard proposal, options development	Executive Leadership Team Meeting 4 WHAT: Prep for CIF1, options implications	Community Input Forum 1 (4/14/21) WHAT: 1 st round options presentation & input	Advisory Team Meeting 6 (5/12/21) WHAT: Options redevelopment, prep for CIF2	Advisory Team Meeting 7 (6/16/21) WHAT: Present final options to superintendent
Advisory Team Meeting 1 (1/13/21) WHAT: Meet & greet, process overview, dat 101	Executive Leadership Team Meeting 3 WHAT: Debrief AT2, continue opts devt	Advisory Team Meeting 4 (3/24/21) WHAT: Options redevelopment, prep for CIF 1			
	 Advisory Team Meeting 3 (2/24/21) WHAT: Options development 	Advisory Team Meeting 4b (3/31/21) WHAT: South Region options redevelopment	Advisory Team Meeting 5 (4/28/21) WHAT: Consider CIF1 inputs, prep for CIF2		

The Process (How?): Guiding Principles

When considering school reconfigurations and boundary revisions, BEP process participants shall prioritize, to the extent possible, the following **guiding principles**.

These are the lenses through which the advisory team members will evaluate options.

1. Implement a **transparent and inclusive boundary review process** that fosters the widespread and ongoing engagement of Harford County's families and community members.
2. Take a **district-wide perspective** by considering the full scope of individual school capacities and student population projections to **balance enrollment**.
3. Operate in the best interest of students by prioritizing **equitable access to safe, high-quality educational environments** for all.
4. Consider the **accessibility of regional programs and signature academic programs & the long-term needs of special populations** (e.g., students with special needs, early learners, etc.) with each decision.
5. Maintain neighborhood schools that **optimize proximity to home, prioritize safe, walkable passages** to and from school, and take into account the boundaries of **existing & planned community developments**.
6. Consider **transportation impacts** and work towards limiting the amount of time required on a bus to 45 minutes or less each way.
7. Optimize **operational efficiency** and ensure the **sustainable allocation of district resources** with each decision.

Community Education Forum #1 - Recap



CEF #1 - Advisory Committee Reflections

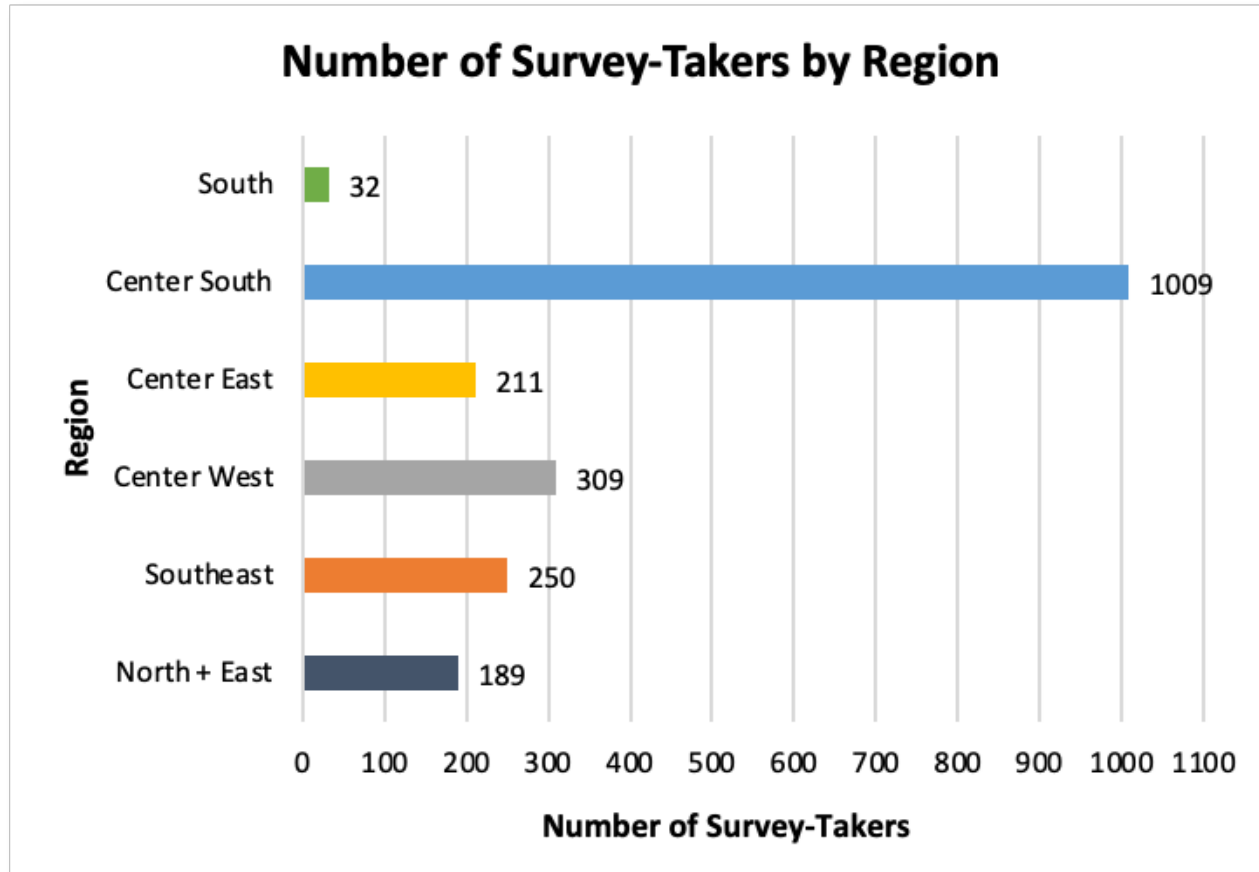
If you attended all or part of the CEF...

1. What went well?
2. What should we do differently next time?
3. What surprised you?
4. What didn't surprise you?

Answers in chat please...

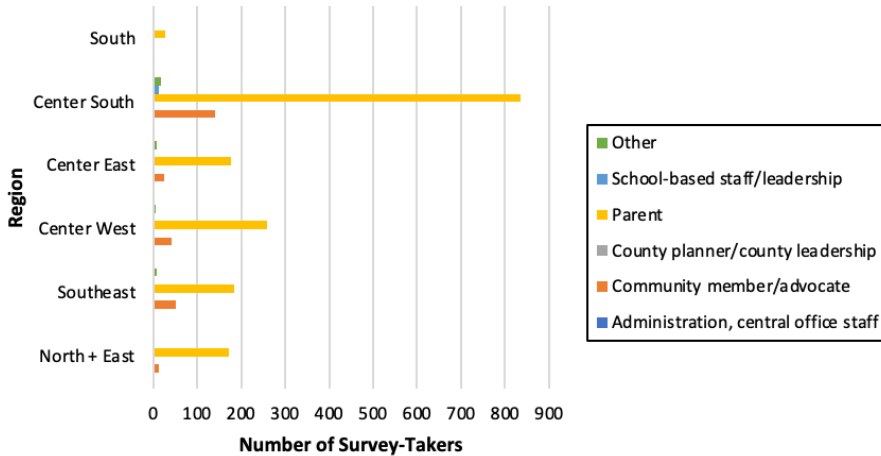


CEF #1 Feedback & Outputs: Demographics

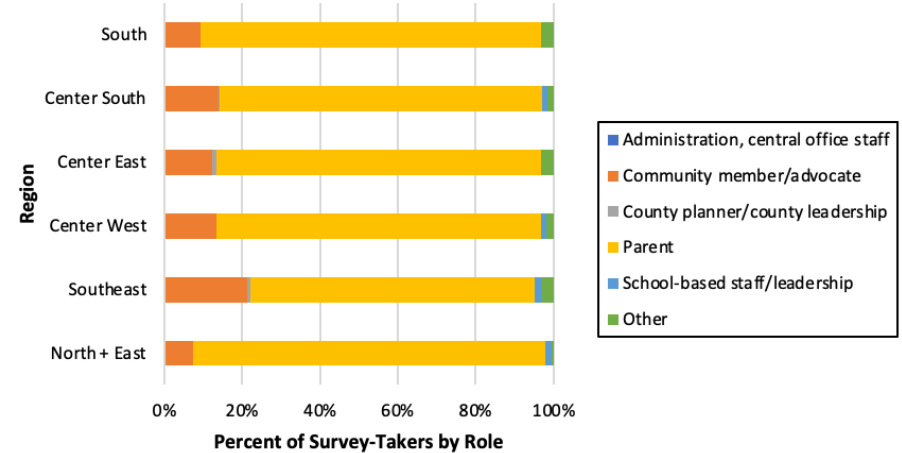


CEF #1 Feedback & Outputs: Demographics

Survey-Takers by Region & Primary Role
(total n of non-unique survey takers = 2000)

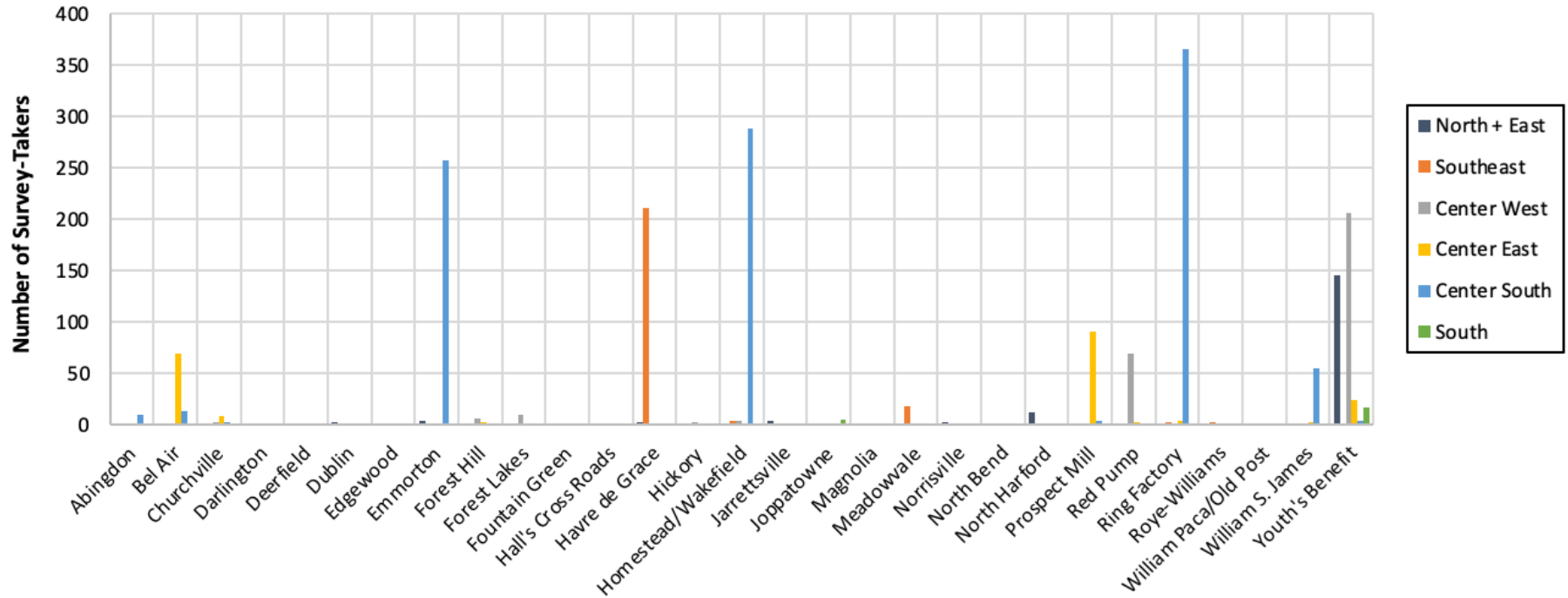


Percent of Survey-Takers by Primary Role for Each Region
(total n of non-unique survey takers = 2000)



CEF #1 Feedback & Outputs: Demographics

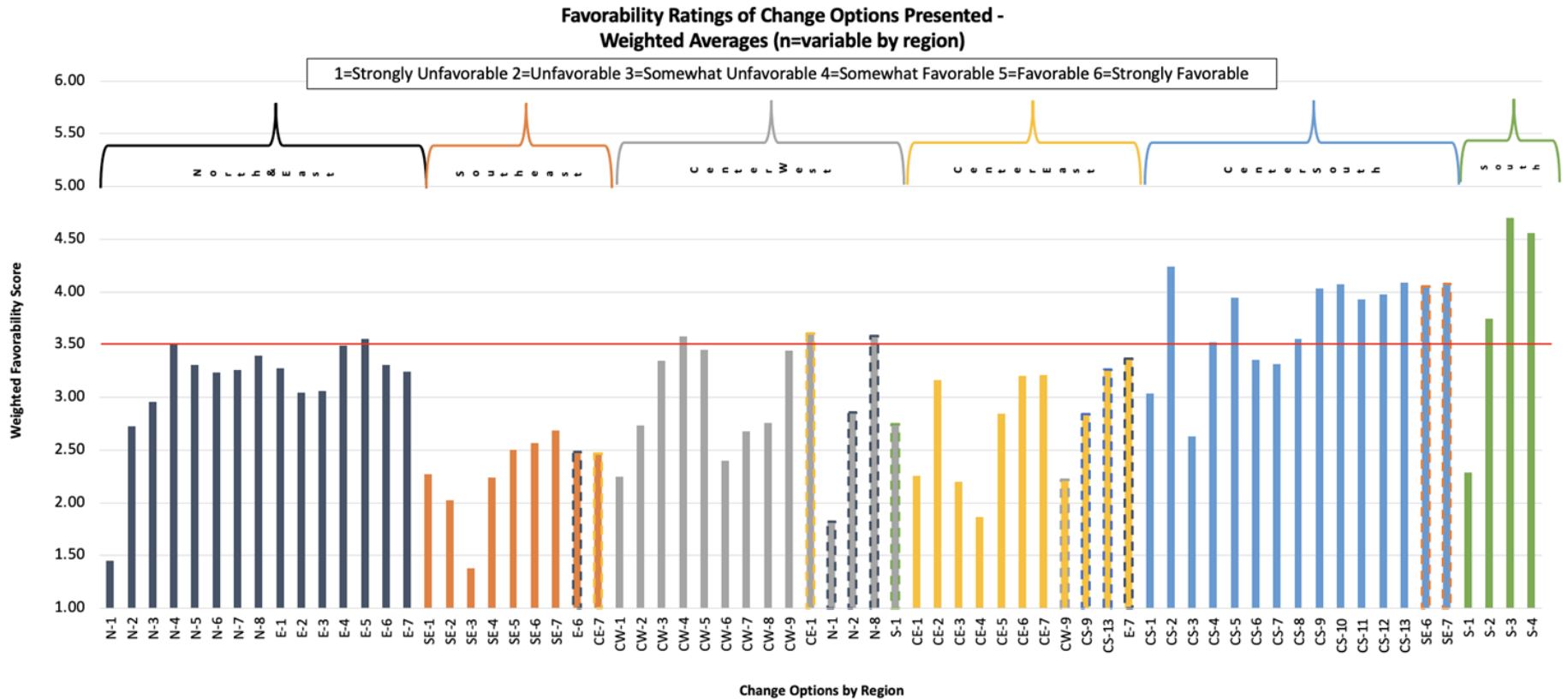
Survey-Takers by Region & by School of Primary Affiliation
(total n of non-unique survey takers = 1992)



CEF #1 Feedback & Outputs: Demographics

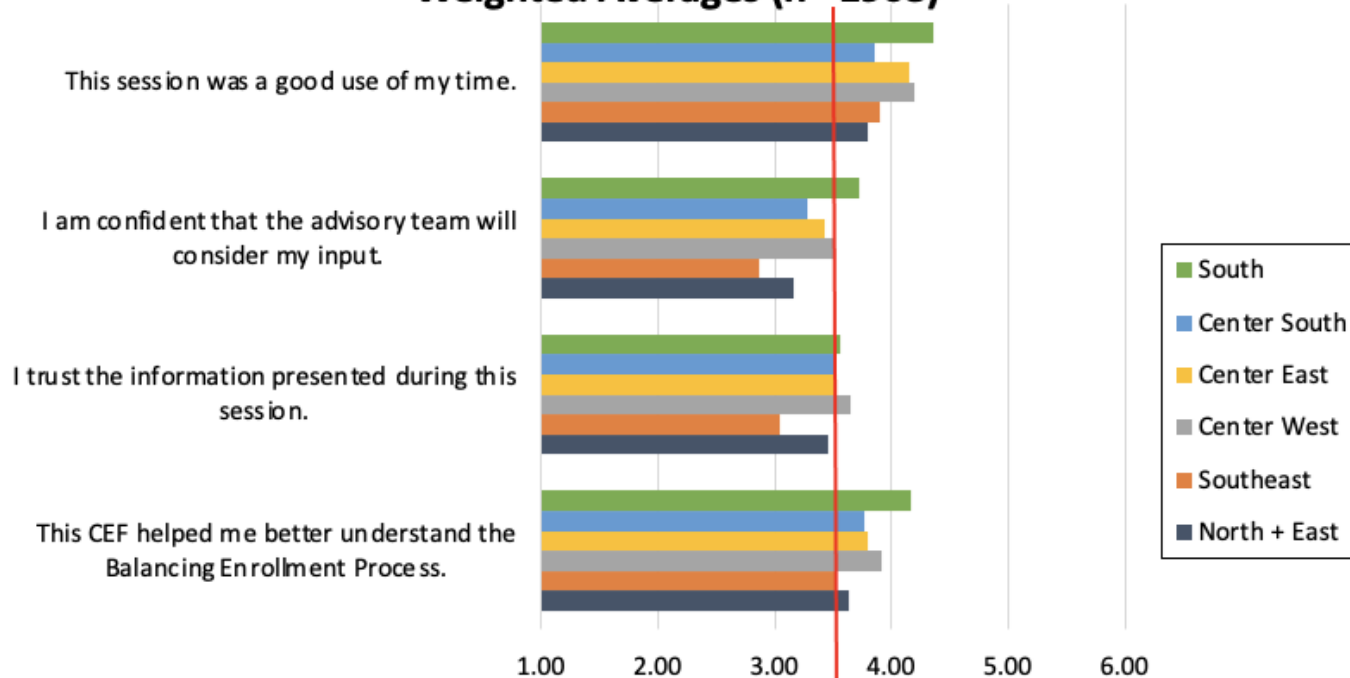
	North + East	Southeast	Center West	Center East	Center South	South
Abingdon	0	1	0	0	10	0
Bel Air	1	1	2	70	14	0
Churchville	0	0	3	9	3	0
Darlington	0	1	0	0	0	0
Deerfield	0	0	0	0	0	2
Dublin	3	0	0	0	0	0
Edgewood	0	0	0	0	1	0
Emmorton	4	1	0	0	257	2
Forest Hill	1	0	6	3	0	0
Forest Lakes	1	0	10	1	0	0
Fountain Green	1	0	1	1	0	0
Hall's Cross Roads	0	1	0	0	0	0
Havre de Grace	3	211	0	0	1	0
Hickory	0	0	3	0	0	0
Homestead/Wakefield	2	4	4	1	288	1
Jarrettsville	4	0	1	0	0	0
Joppatowne	1	0	0	0	0	5
Magnolia	0	0	0	0	0	2
Meadowvale	0	18	0	0	0	0
Norrisville	3	0	0	0	0	0
North Bend	1	1	0	0	0	0
North Harford	13	0	0	0	0	0
Prospect Mill	0	1	2	91	4	1
Red Pump	0	1	69	3	0	0
Ring Factory	2	3	0	4	366	1
Roye-Williams	0	3	0	0	0	0
William Paca/Old Post	0	0	0	0	2	0
William S. James	1	2	1	3	55	1
Youth's Benefit	146	1	206	24	4	17
Total Counts	187	250	308	210	1005	32

CEF #1 Feedback & Outputs: Favorability of Options



CEF #1 Feedback & Outputs: Process Experience

**Survey-Takers' Perceptions of the CEF -
Weighted Averages (n= 1908)**



1=Strongly Disagree 2=Disagree 3=Somewhat Disagree 4=Somewhat Agree 5=Agree 6=Strongly Agree

Forum Event Flow - Timing & Attendance




District Region	Schools Included (Elementaries Only)	Timing	Attendance
North + East	Jarrettsville, North Bend, Norrisville, North Harford, Dublin, Darlington	5:25-5:50	494 (5:22PM)
Southeast	Meadowvale, Havre de Grace, Roye-Williams, Hall's Cross Roads, Bakerfield, George D. Lisby	5:50-6:15	592 (5:59PM)
Center East	Bel Air, Churchville, Fountain Green, Prospect Mill	6:15-6:40	579 (6:17PM)
Center West	Forest Hill, Forest Lakes, Hickory, Red Pump, Youth's Benefit	6:40-7:05	590 (6:41PM)
Center South	Abingdon, Church Creek, Emmorton, Homestead/Wakefield, Ring Factory, William Paca/Old Post Rd, William S. James	7:05-7:30	645 (7:07PM)
South	Deerfield, Edgewood, Joppatowne, Magnolia, Riverside	7:30-7:55	469 (7:39PM)

CEF #1 Feedback & Outputs: Open-Ended

Elementary School CEF Scenario Feedback:



Intentions

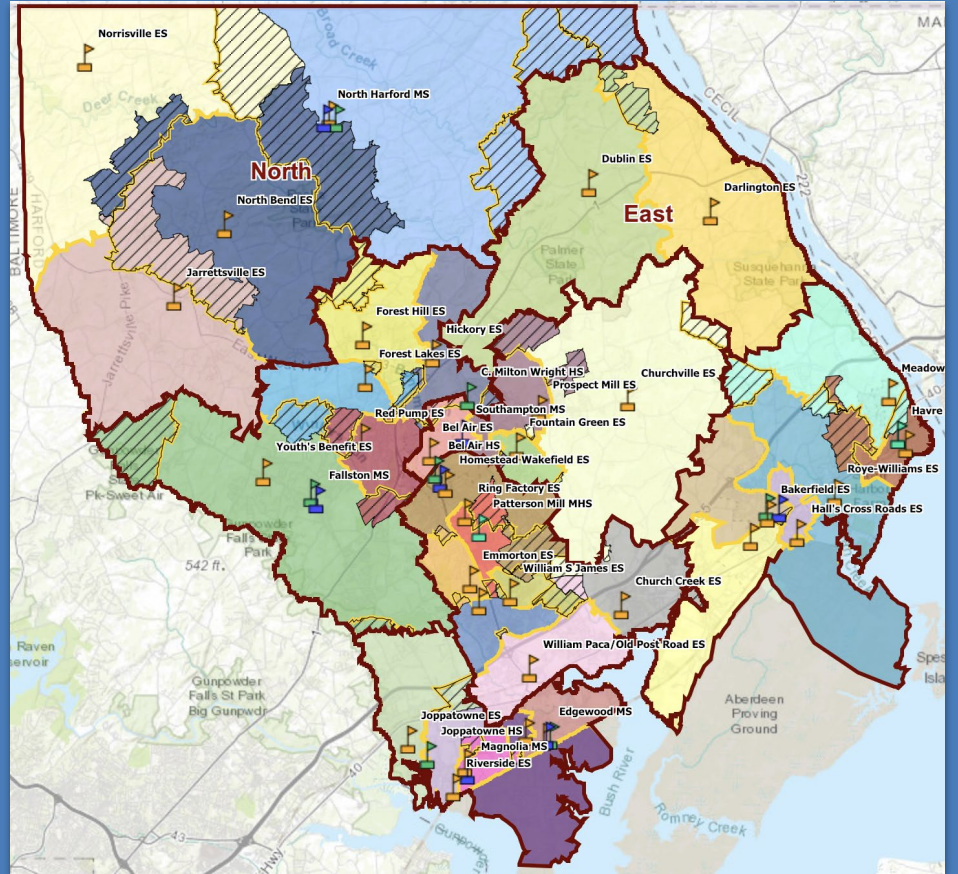
1.  Participants review CEF #1 outputs and discuss takeaways.
2. Participants discuss refinements to the elementary school change options.
3. Participants consider forecast data and provide input to initial balancing enrollment options for middle and high schools.
4. Participants leave with clear next steps.

Agenda

- Session Preview, CEF1 Review (30 min)
- Considering Changes Breakout (110 min)
 - Group 1: N+E, CW, CE
 - Group 2: CS, S, SE
 - Group 3: Middle & High
- Wrap Up & Next Steps (10 min)



Balancing Enrollment: Getting Back to Work



Today's Focal Points

ES: North, East, Center West, Center East Regions	ES: Center South, South, South East Regions	Middle & High Schools
<ul style="list-style-type: none">→ Review change implications & iterations post CEF→ Resolve & advance as possible	<ul style="list-style-type: none">→ Review change implications & iterations post CEF→ Resolve & advance as possible	<ul style="list-style-type: none">→ Dive into springboard→ Surface concerns & change ideas

Breakout Groups: Parallel Work



SET UP

Participants in 3 groups based on preferences:

- Group 1:
ES (N+E, CW, CE)
- Group 2:
ES (CS, S, SE)
- Group 3:
**MS & HS
springboard**

Please be sure your camera is on if possible.

PART 1: FLO Presentation (~20 min)

- ES: Adjustments & implications based on CEF feedback
- MS/HS: Springboard proposal

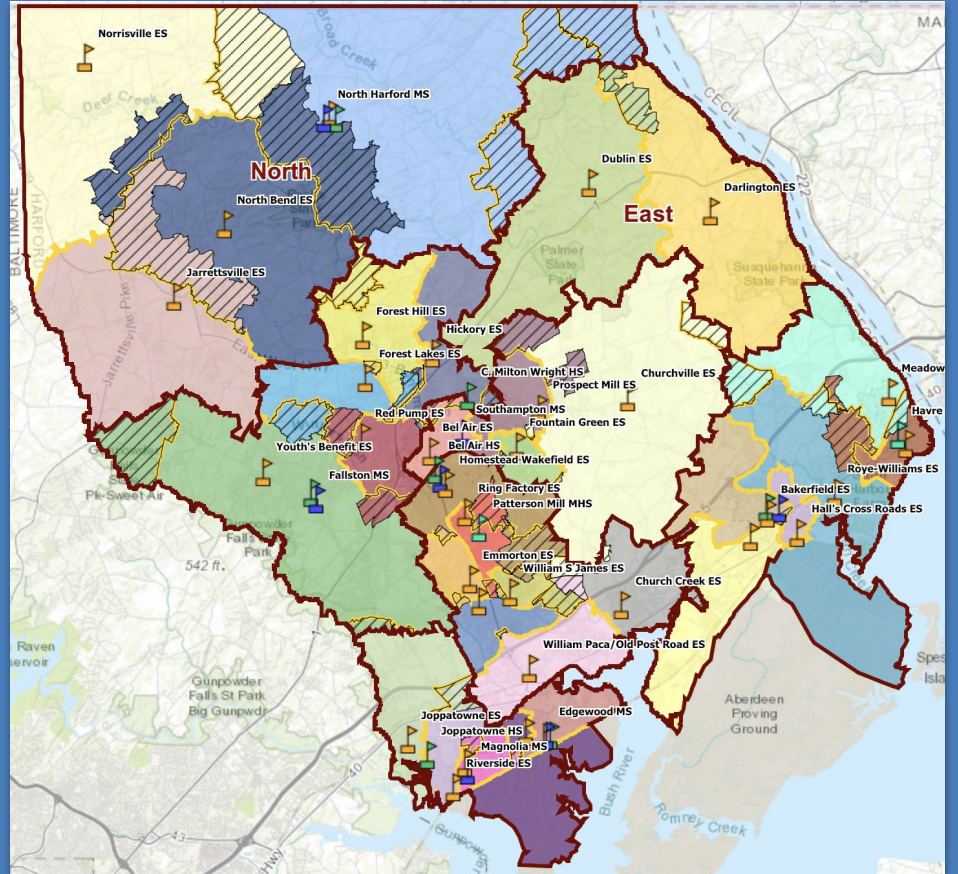
PART 2: Discussion (~65 min) (back in full group by 7:00)

- ES: Reactions, suggestions
- MS/HS: Concerns, suggestions

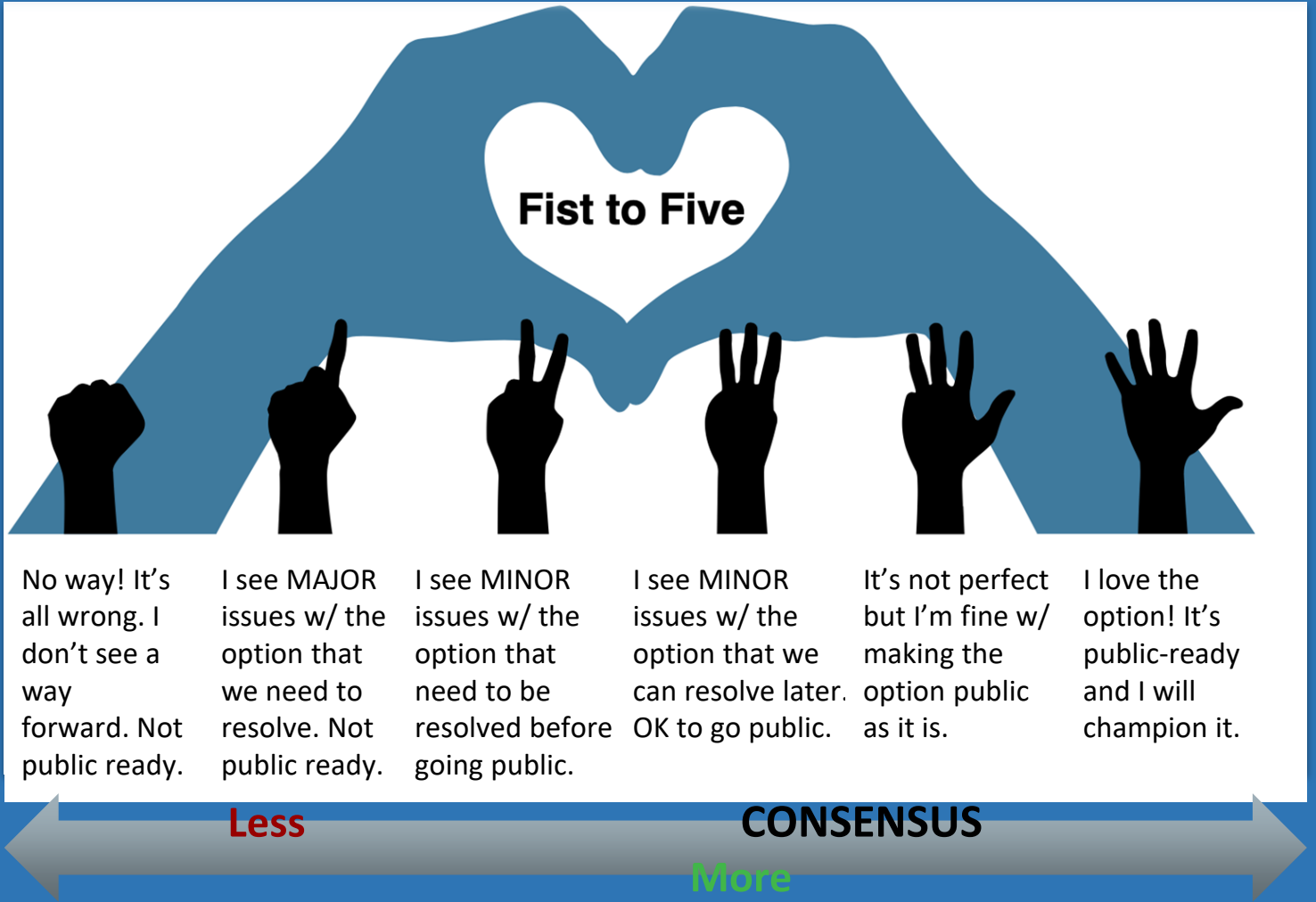
PART 3: Return to Full Group (~20 min)

- Each group will present out key themes from discussion
- Fist-to-five poll of ES option

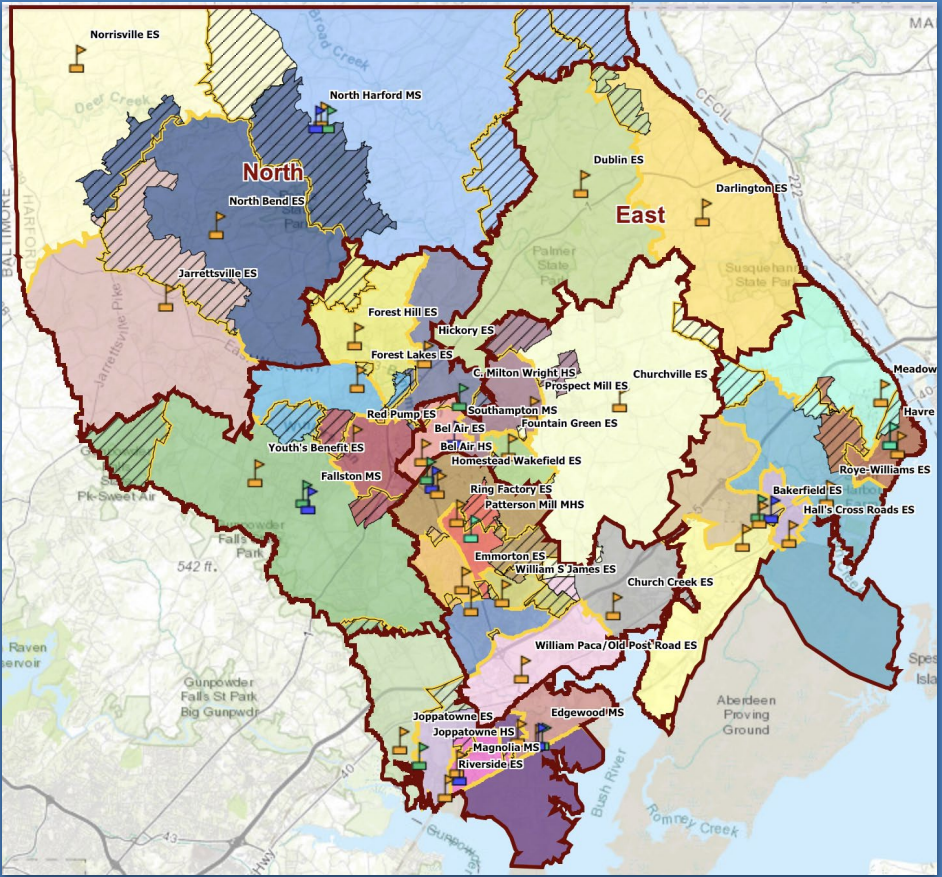
Welcome Back!
Time for group
share outs.



Question:
Is the
updated
ES option
ready to
release to
the
public?



Welcome Back!
Time for group
share outs.



Intentions

1. ✦ Participants review CEF #1 outputs and discuss takeaways.
2. ✦ Participants discuss refinements to the elementary school change options.
3. ✦ Participants consider forecast data and provide input to initial balancing enrollment options for middle and high schools.
4. Participants leave with clear next steps.

Agenda

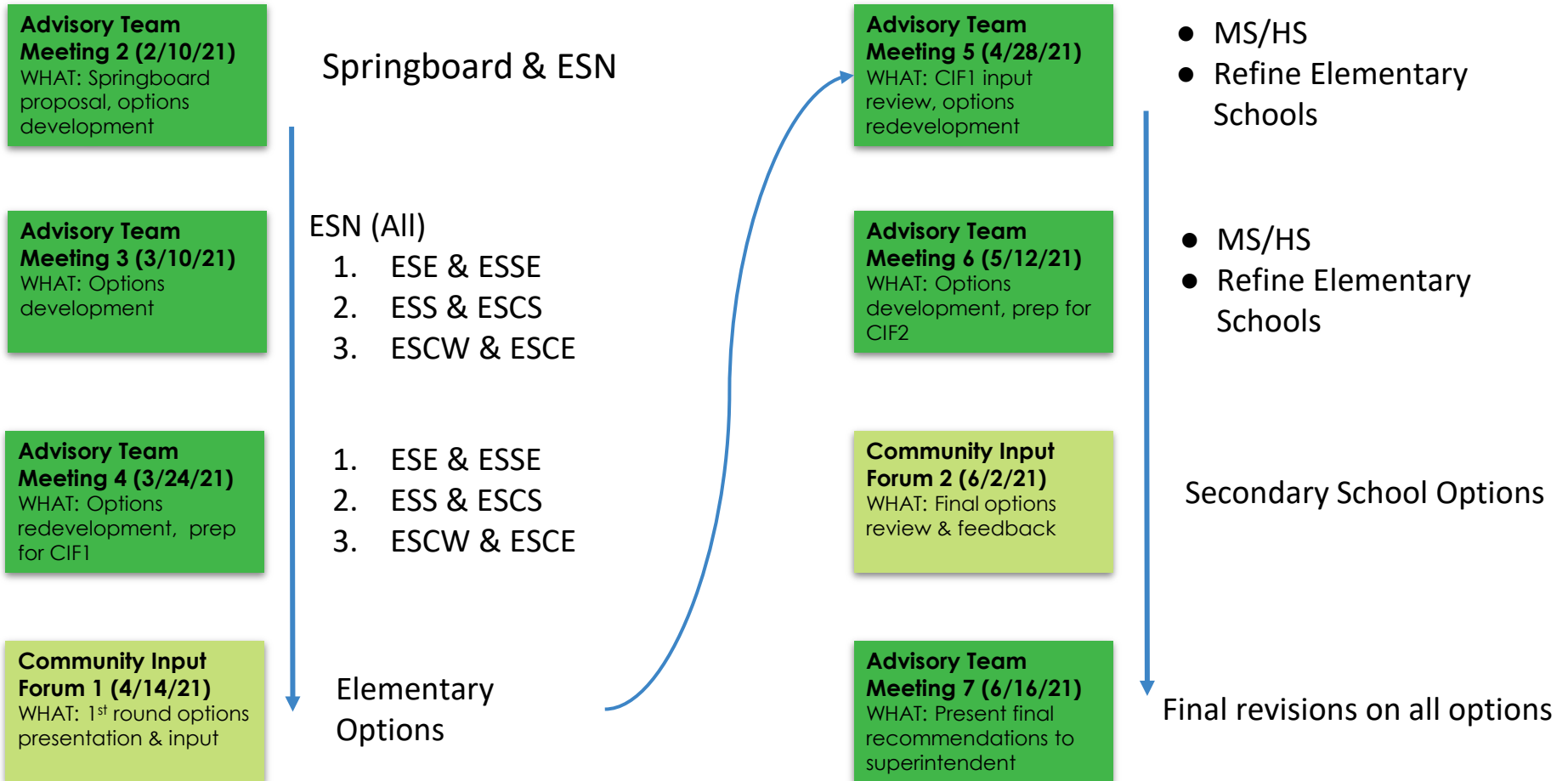
- Session Preview, CEF1 Review (30 min)
- Considering Changes Breakout (110 min)
 - Group 1: N+E, CW, CE
 - Group 2: CS, S, SE
 - Group 3: Middle & High
- Wrap Up & Next Steps (10 min)



Timeline of Key Meetings & Events

January	February	March	April	May	June
Executive Leadership Team Meeting 1 WHAT: Prepare for A-Team meetings	Executive Leadership Team Meeting 2 WHAT: Debrief A-Team meeting; Spring board proposal	Advisory Team Meeting 3 (3/10/21) WHAT: Options redevelopment, prep for CIF1	Executive Leadership Team Meeting 5 WHAT: CIF1 review, options implications	Executive Leadership Team Meeting 6 WHAT: Process check, options check, prep for CIF2	Community Input Forum 2 (6/2/21) WHAT: Final options review & feedback
Process Orientation WHAT: Asynchronous process overview	Advisory Team Meeting 2 (2/10/21) WHAT: Springboard proposal, options development	Executive Leadership Team Meeting 4 WHAT: Prep for CIF1, options implications	Community Input Forum 1 (4/14/21) WHAT: 1 st round options presentation & input	Advisory Team Meeting 6 (5/12/21) WHAT: Options redevelopment, prep for CIF2	Advisory Team Meeting 7 (6/16/21) WHAT: Present final options to superintendent
Advisory Team Meeting 1 (1/13/21) WHAT: Meet & greet, process overview, dat 101	Executive Leadership Team Meeting 3 WHAT: Debrief AT2, continue opts devt	Advisory Team Meeting 4 (3/24/21) WHAT: Options redevelopment, prep for CIF 1			
	 Advisory Team Meeting 3 (2/24/21) WHAT: Options development 	Advisory Team Meeting 4b (3/31/21) WHAT: South Region options redevelopment	Advisory Team Meeting 5 (4/28/21) WHAT: Consider CIF1 inputs, prep for CIF2		

Advisory Team Meetings - Boundary Review



Advisory Team Meeting 6 Preview

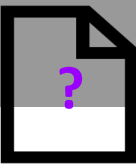
Meeting Intentions & Outcomes

1. Continue options refinement for ES boundaries
2. Options consideration for MS & HS boundaries
3. Goal: CEF-ready revisions for each region
4. Preview upcoming CEF in more detail

Facilitation Details

- Wednesday, May 12th, 5-7:30PM
- Virtual via Zoom
- Expecting ~40 participants + FLO/ Bloom staff
- Continuation of breakout session engagement and on-the-fly modeling
- During and post-session opportunities for reaction and feedback

Exit Survey



Please take ~5 minutes to complete our exit survey. It will be emailed to you TOMORROW and you will have until 9AM Monday to complete it.

We will be asking specific questions about the ES revisions and MS/HS springboard.

We take your responses very seriously! Members of our planning team will read and consider every word from your surveys and use the information to develop FAQs and other process considerations. Please help us continue to make this process constructive and meaningful.

Thank you!

**Survey link
via email!**

**Thursday-
Monday to
complete**

**Don't forget
the survey!**

Thank You!

See you again on May 12.



HARFORD COUNTY
PUBLIC SCHOOLS