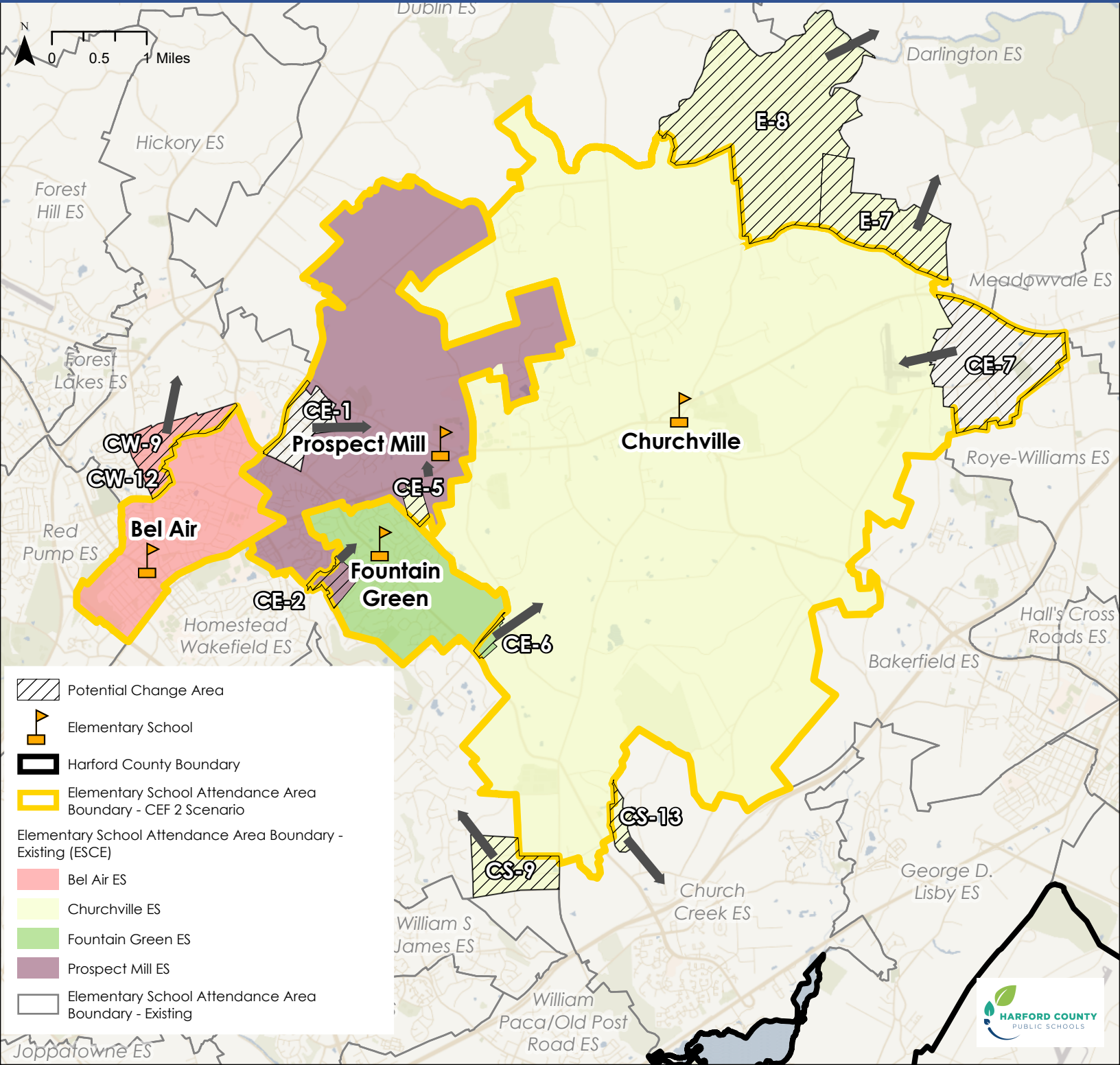










District Overview - CEF 2 Elementary School Scenario

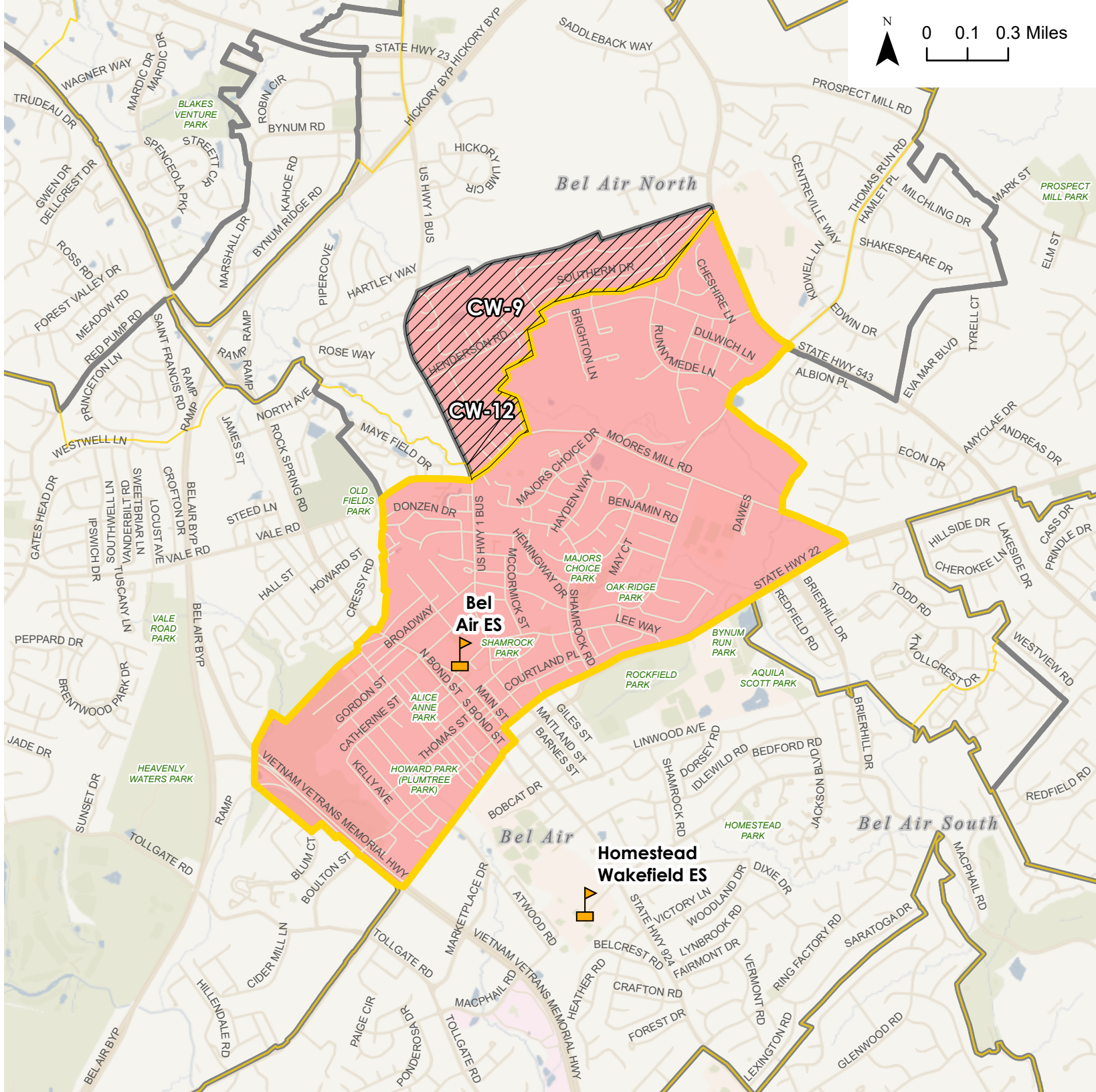
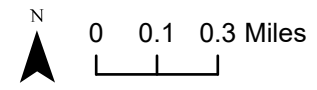
Elementary School Center East (ESCE)



CEF 2 Elementary School Scenario - Bel Air ES

-  Elementary School
-  District Boundary
-  Advisory Team
-  Working Elementary School Boundary for Bel Air ES
-  Potential Change Area
- Current Configuration - Elementary Schools**
-  Bel Air ES Current Attendance Area
-  Elementary School Attendance Area
-  Boundary Outline - Current Attendance Area









Potential Change Areas:
 CW-9: From Bel Air ES to Hickory ES
 CW-12: From Bel Air ES to Hickory ES

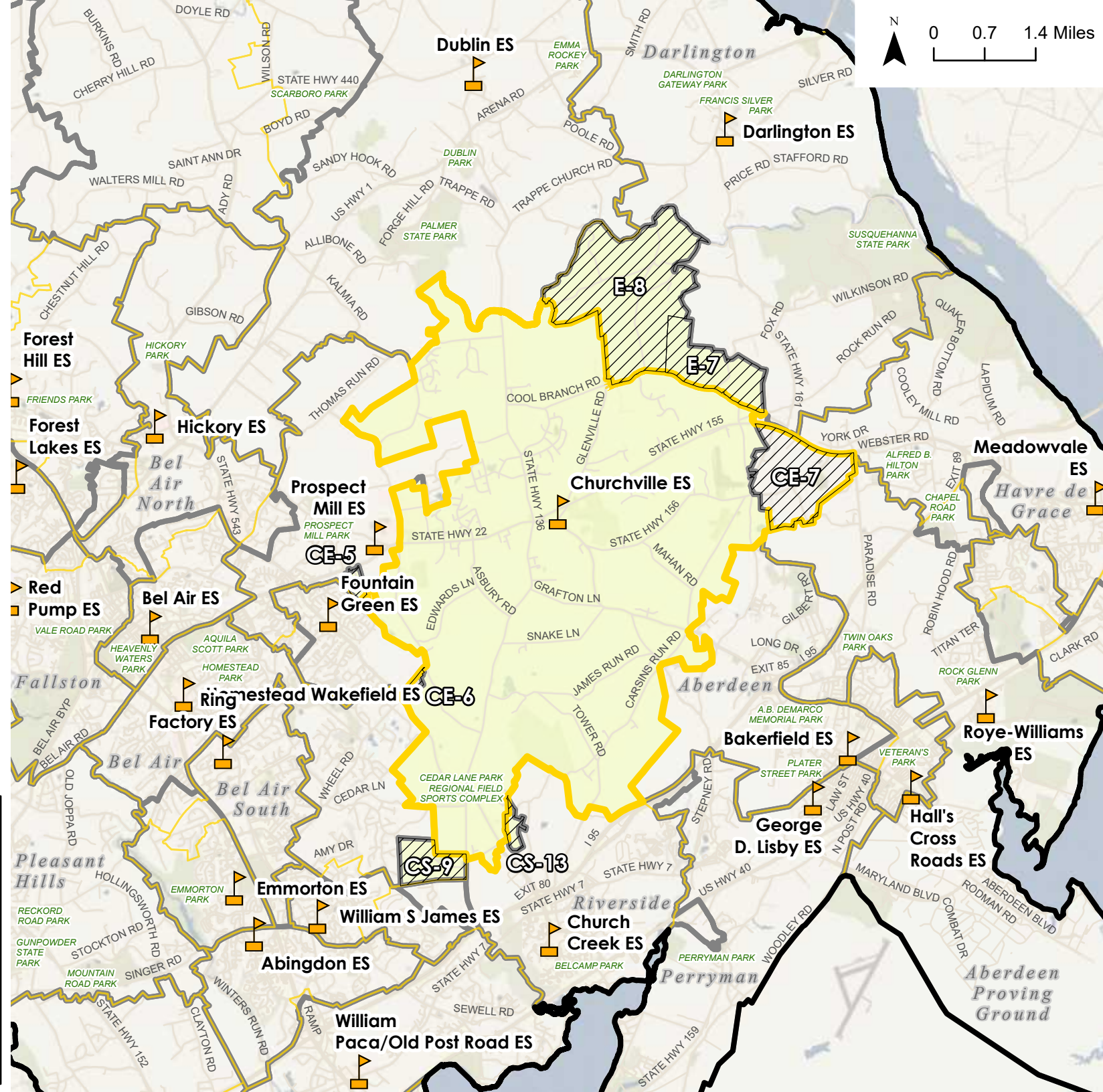
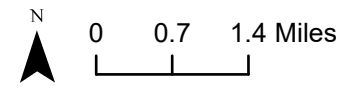


Overview Map



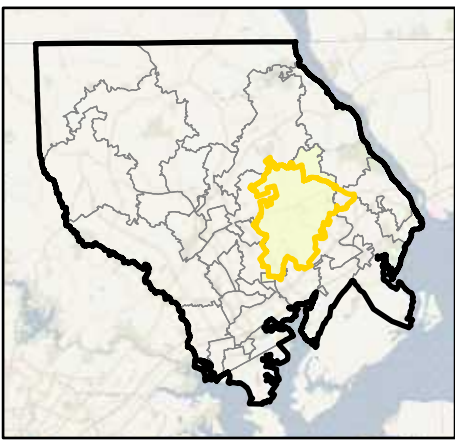
CEF 2 Elementary School Scenario - Churchville ES

-  Elementary School
-  District Boundary
-  Advisory Team
-  Working Elementary School Boundary for Churchville ES
-  Potential Change Area
- Current Configuration - Elementary Schools**
-  Churchville ES Current Attendance Area
-  Elementary School Attendance Area
-  Boundary Outline - Current Attendance Area




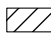


- Potential Change Areas:
- CE-5: From Churchville ES to Prospect Mill ES
 - E-7: From Churchville ES to Darlington ES
 - CS-4: From Ring Factory ES to Abingdon ES
 - CS-9: From Churchville ES to Homestead Wakefield ES
 - CS-13: From Churchville ES to Church Creek ES
 - E-8: From Churchville ES to Darlington ES




Overview Map



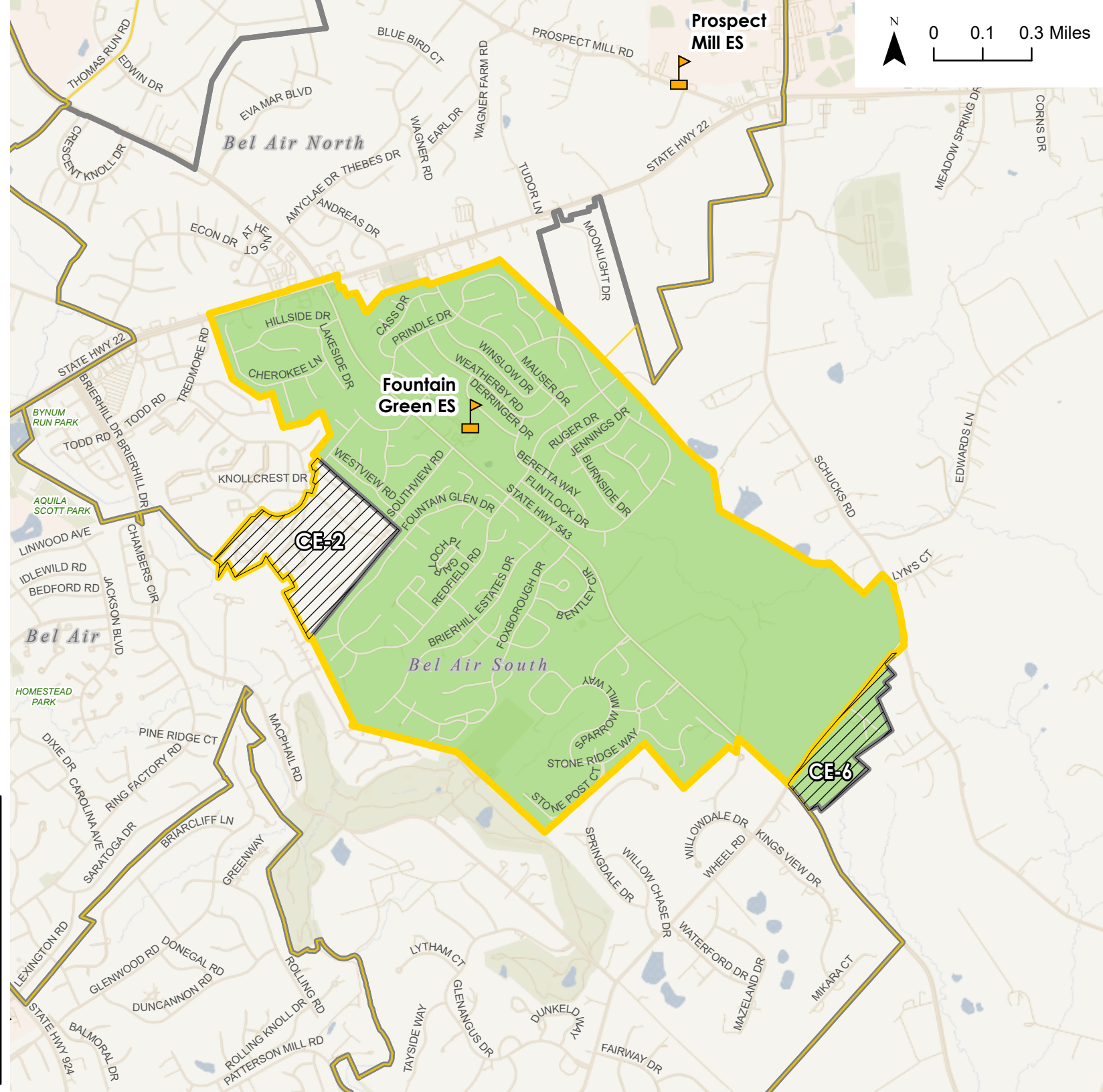
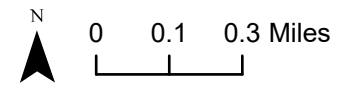
CEF 2 Elementary School Scenario - Fountain Green ES

-  Elementary School
-  District Boundary
-  Advisory Team Working Elementary School Boundary for Fountain Green ES
-  Potential Change Area

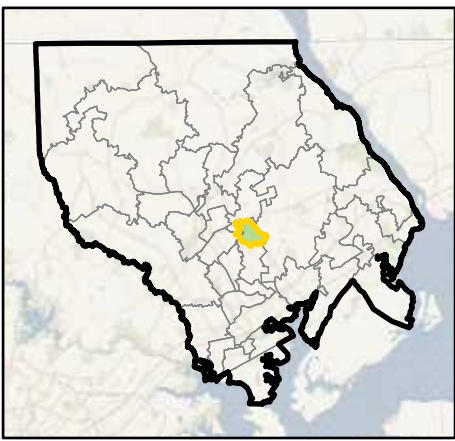
Current Configuration - Elementary Schools

-  Fountain Green ES Current Attendance Area
-  Elementary School Attendance Area
-  Boundary Outline - Current Attendance Area




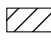



Potential Change Areas:
 CE-6: From Fountain Green ES to Churchville ES
 CE-2: From Prospect Mill ES to Fountain Green ES



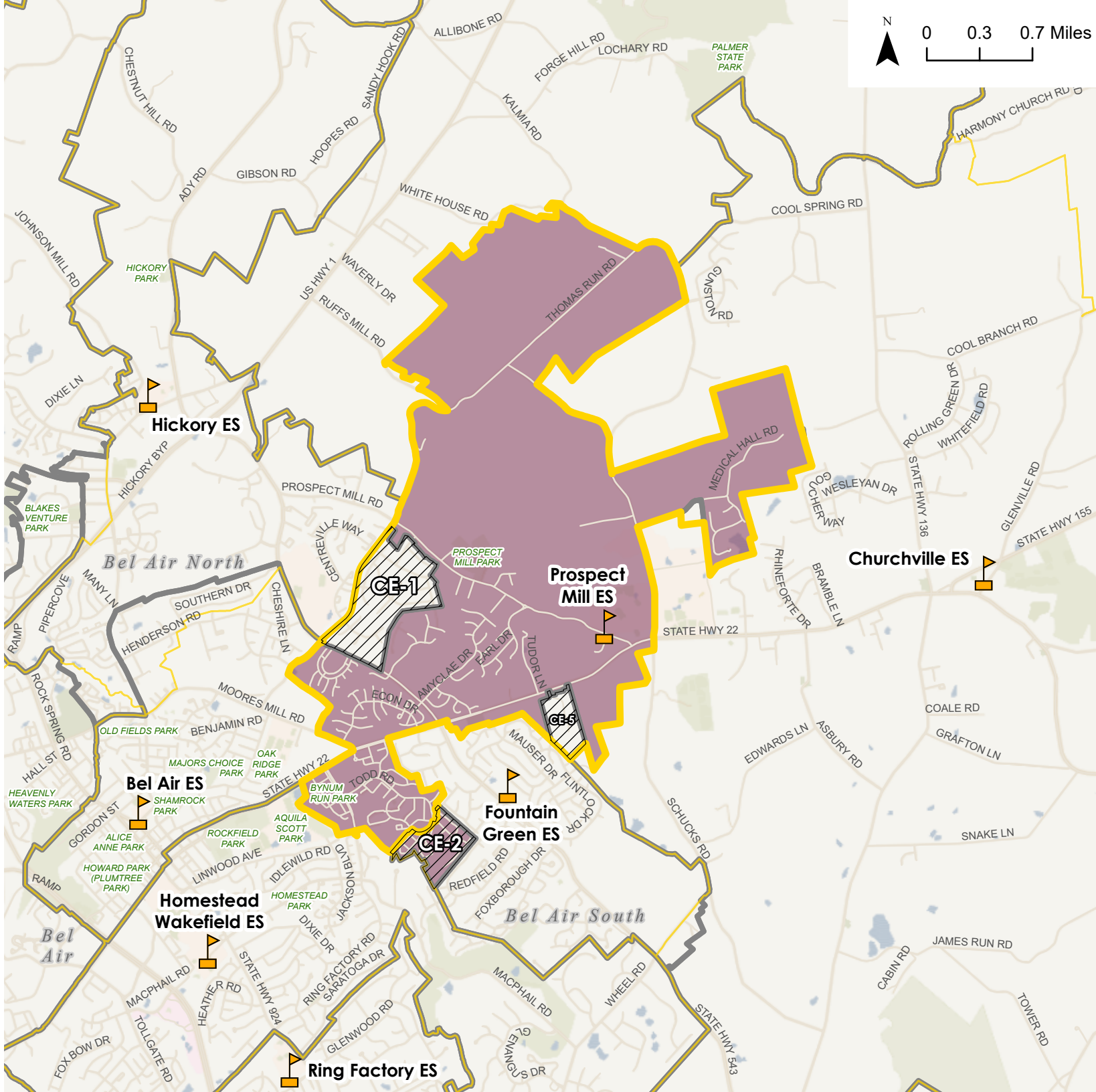
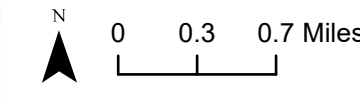
Overview Map



CEF 2 Elementary School Scenario - Prospect Mill ES

-  Elementary School
-  District Boundary
-  Advisory Team Working Elementary School Boundary for Prospect Mill ES
-  Potential Change Area
- Current Configuration - Elementary Schools**
-  Prospect Mill ES Current Attendance Area
-  Elementary School Attendance Area
-  Boundary Outline - Current Attendance Area

Potential Change Areas:
 CE-1: From Hickory ES to Prospect Mill ES
 CE-2: From Prospect Mill ES to Fountain Green ES
 CE-5: From Churchville ES to Prospect Mill ES



Overview Map

