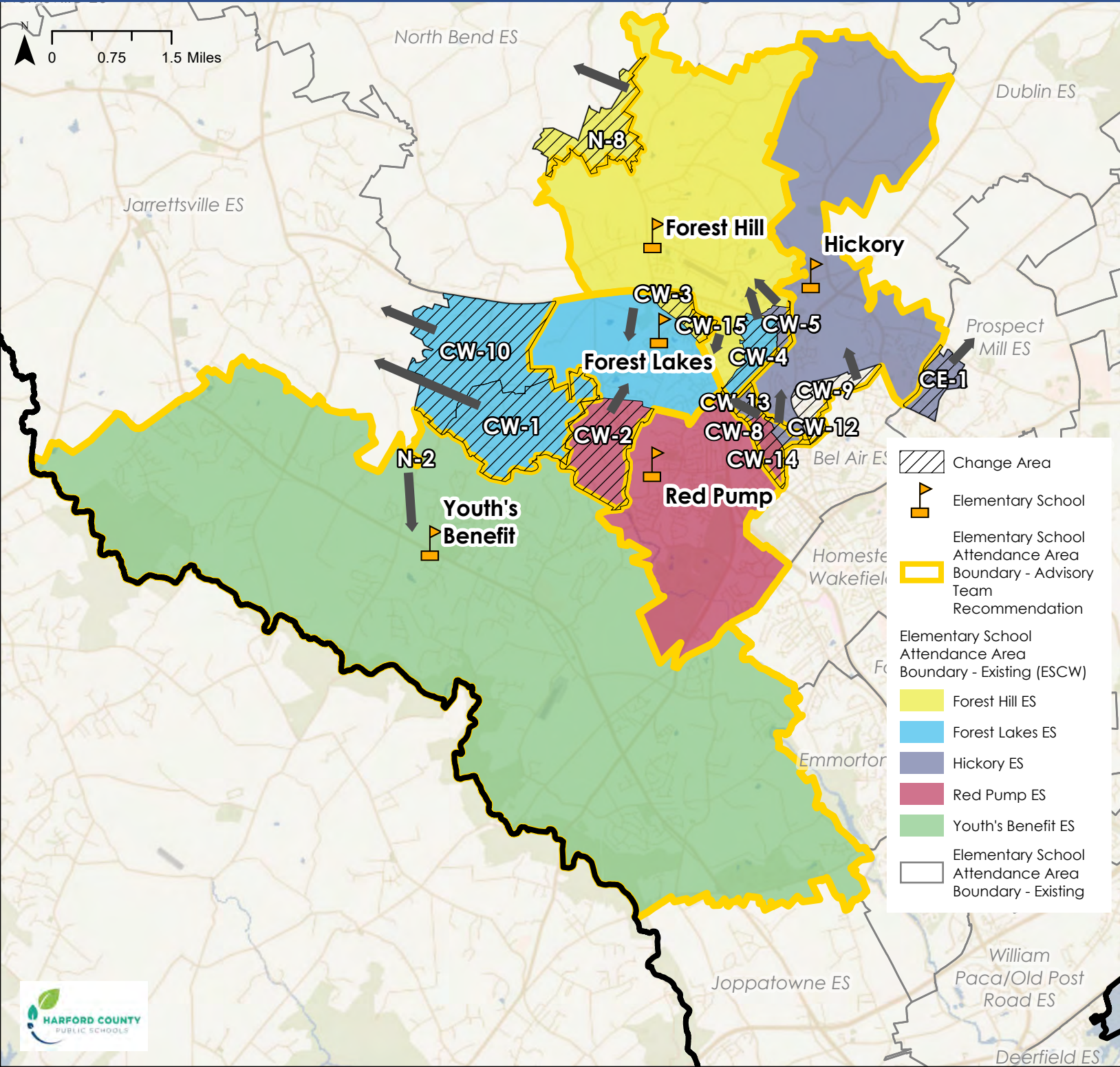



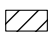




District Overview - Advisory Team Recommendation Elementary School Center West (ESCW)

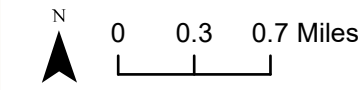
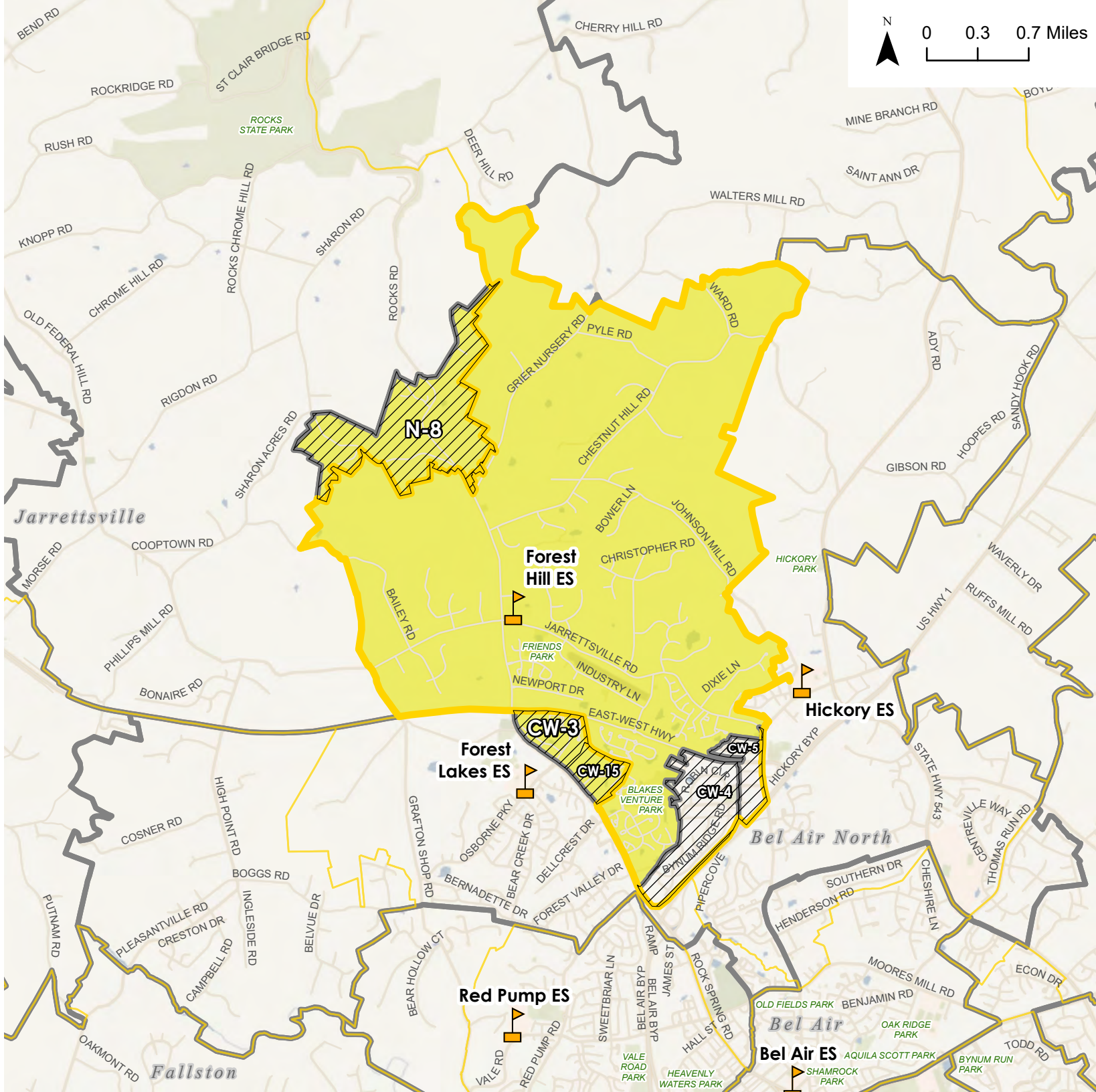
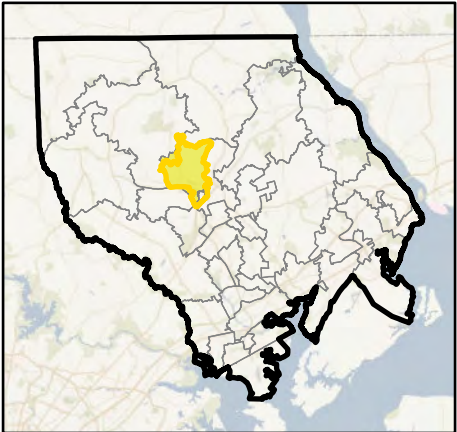


Advisory Team Elementary School Boundary Recommendation - Forest Hill ES





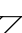




-  Elementary School
-  District Boundary
-  Advisory Team Elementary School Boundary Recommendation for Forest Hill ES
-  Potential Change Area
- Current Configuration - Elementary Schools**
-  Forest Hill ES Current Attendance Area
-  Elementary School Attendance Area Boundary Outline - Current Attendance Area

Potential Change Areas:
 CW-3: From Forest Hill ES to Forest Lake ES
 CW-15: From Forest Hill ES to Forest Lake ES
 N-8: From Forest Hill ES to North Bend ES
 CW-4: From Forest Lake ES to Forest Hill ES
 CW-5: From Hickory ES to Forest Hill ES

Overview Map



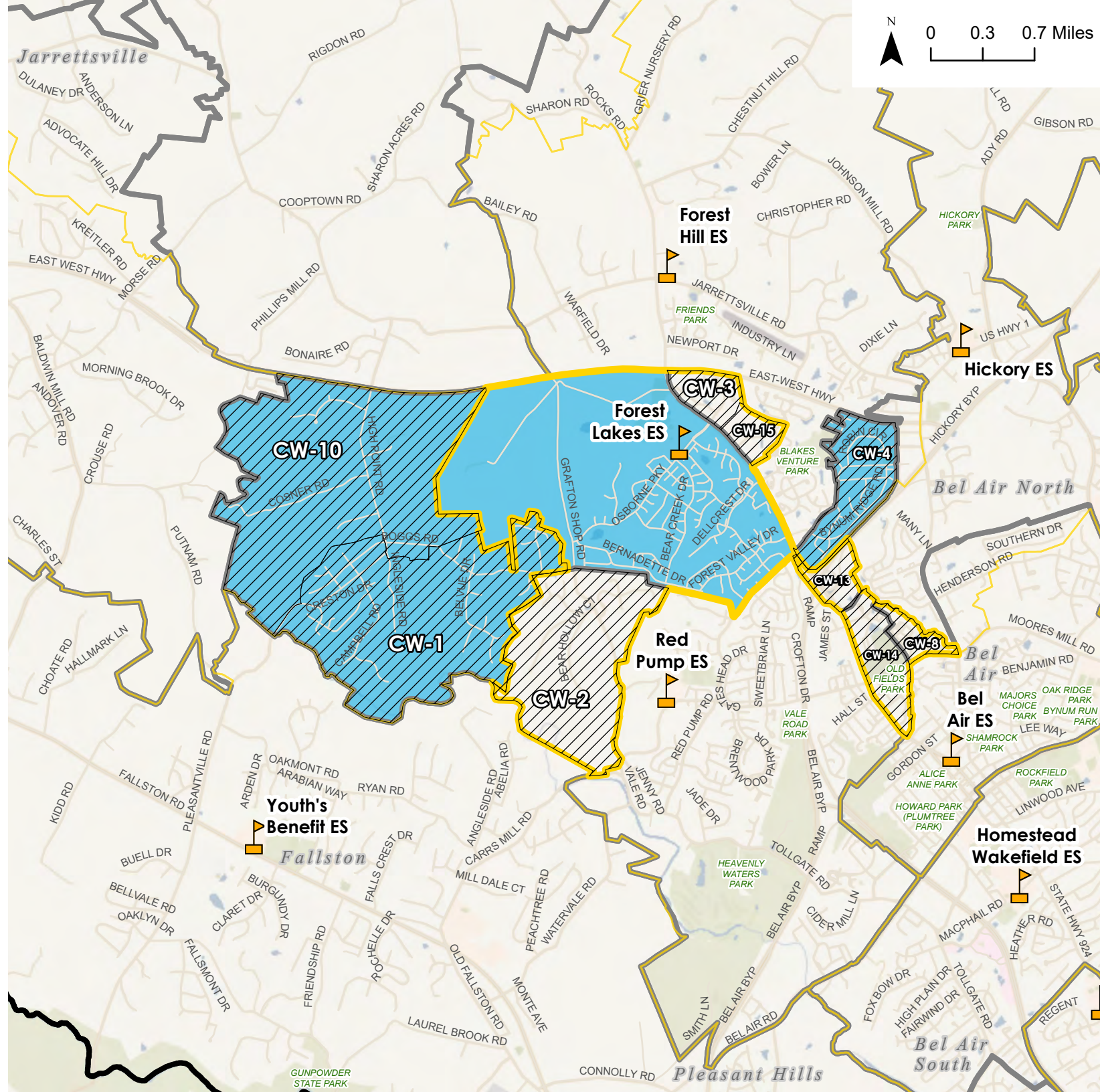
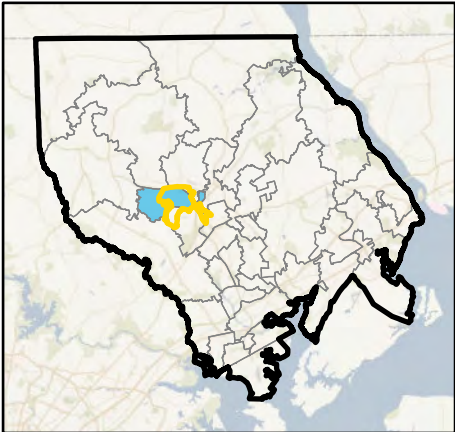
Advisory Team Elementary School Boundary Recommendation - Forest Lakes ES

-  Elementary School
-  District Boundary
-  Advisory Team Elementary School Boundary
-  Recommendation for Forest Lake ES
-  Potential Change Area
- Current Configuration - Elementary Schools**
-  Forest Lakes ES
-  Current Attendance Area
-  Elementary School Attendance Area
-  Boundary Outline - Current Attendance Area




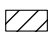


Potential Change Areas:

- CW-4: From Forest Lake ES to Forest Hill ES
- CW-1: From Forest Lake ES to Jarrettsville ES
- CW-10: From Forest Lake ES to Jarrettsville ES
- CW-2: From Red Pump ES to Forest Lake ES
- CW-8: From Hickory ES to Forest Lake ES
- CW-3: From Forest Hill ES to Forest Lake ES
- CW-15: From Forest Hill ES to Forest Lake ES
- CW-14: From Red Pump ES to Forest Lake ES
- CW-13: From Hickory ES to Forest Lake ES

Overview Map

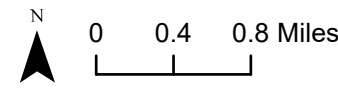
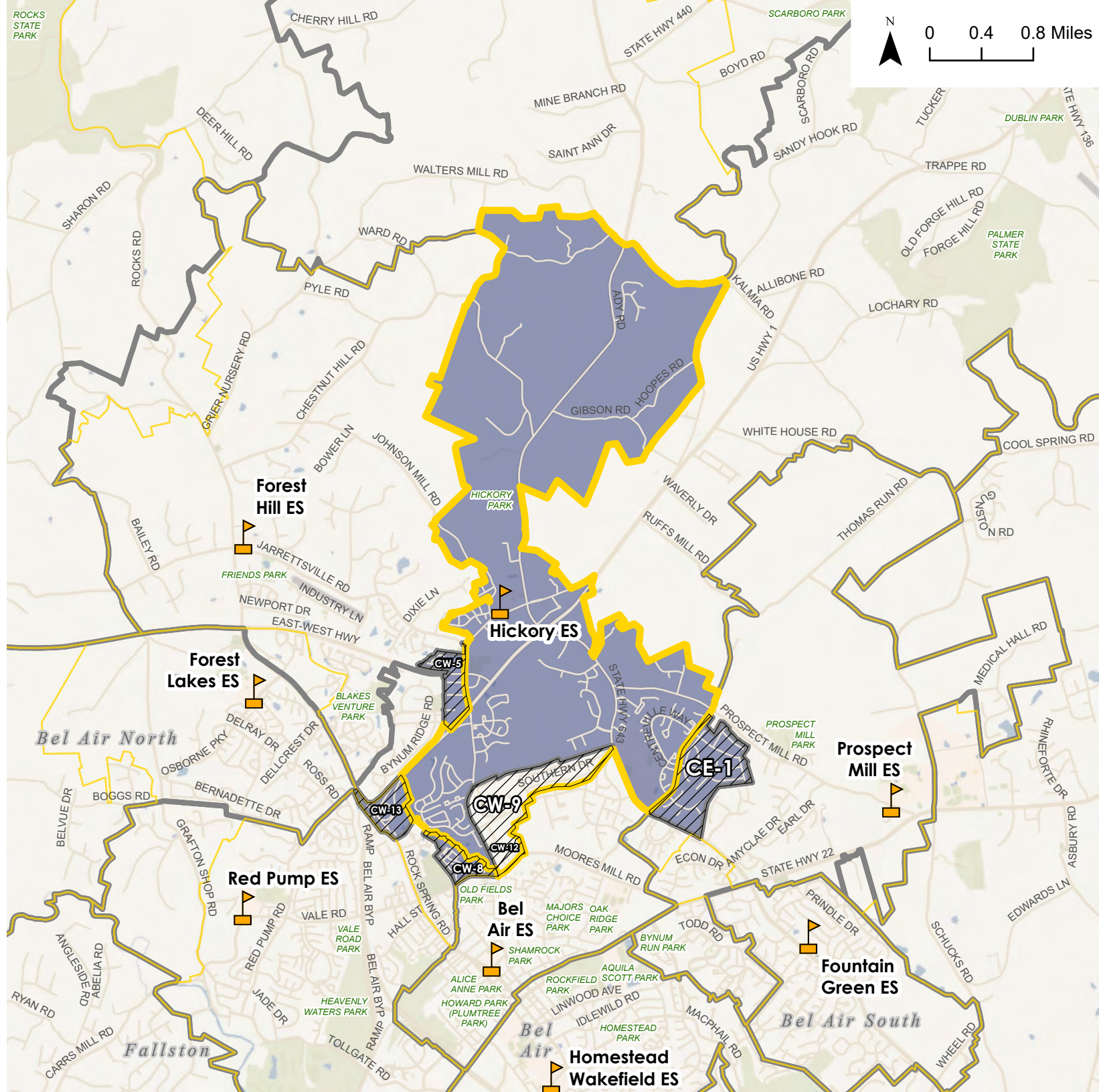
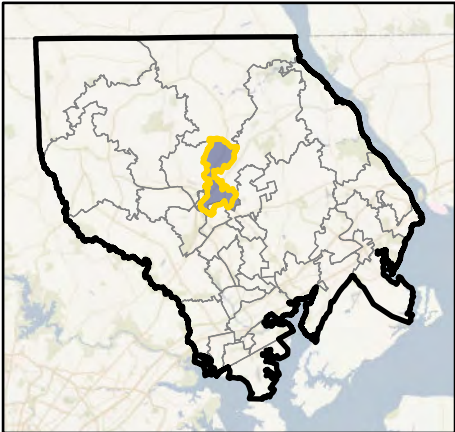


Advisory Team Elementary School Boundary Recommendation - Hickory ES







-  Elementary School
 -  District Boundary
 -  Advisory Team Elementary School Boundary Recommendation for Hickory ES
 -  Potential Change Area
- Current Configuration - Elementary Schools**
-  Hickory ES Current Attendance Area
 -  Elementary School Attendance Area Boundary Outline - Current Attendance Area

Potential Change Areas:
 CW-5: From Hickory ES to Forest Hill ES
 CW-8: From Hickory ES to Forest Lake ES
 CE-1: From Hickory ES to Prospect Mill ES
 CW-13: From Hickory ES to Forest Lake ES
 CW-9: From Bel Air ES to Hickory ES
 CW-12: From Bel Air ES to Hickory ES

Overview Map

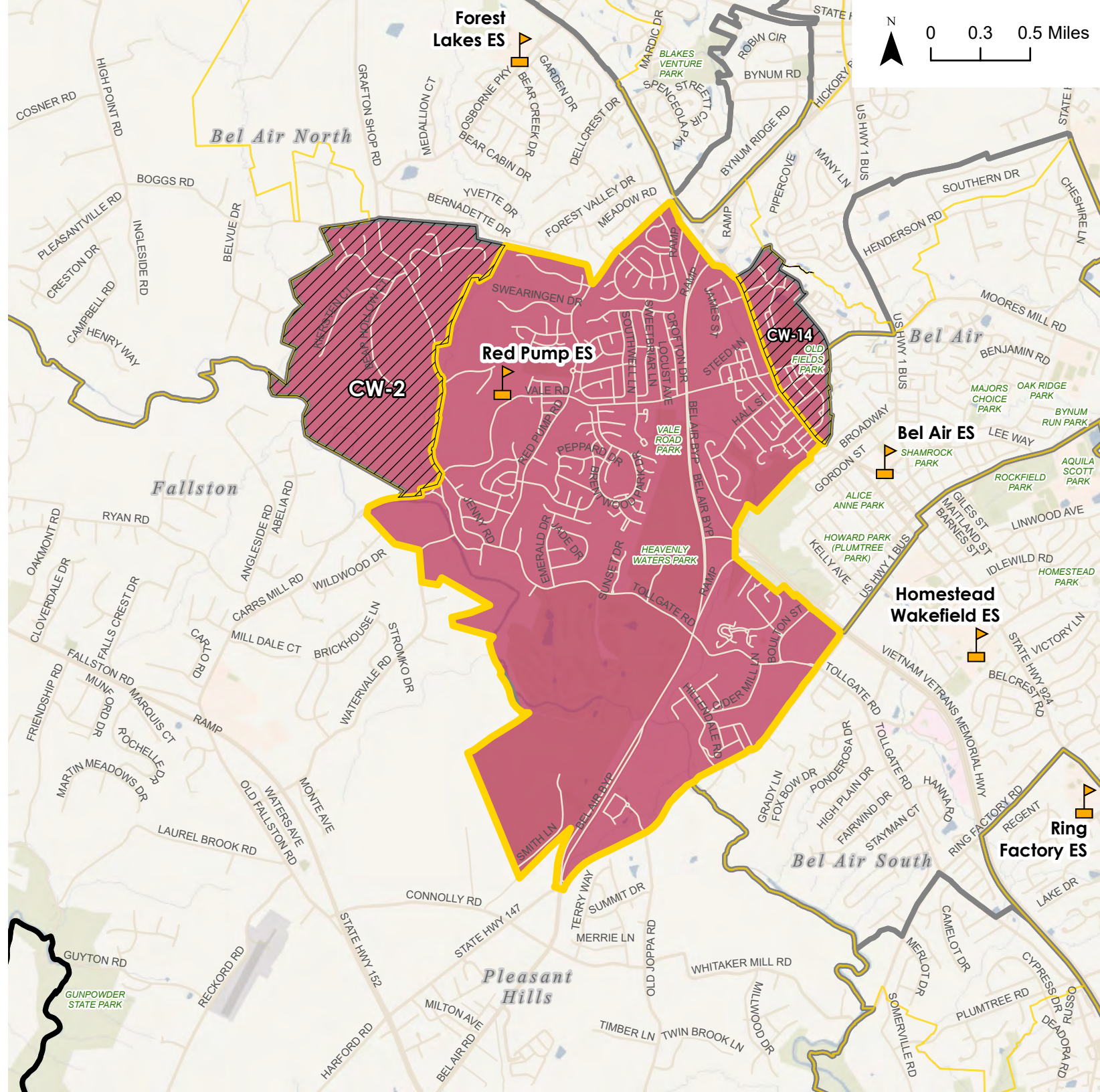
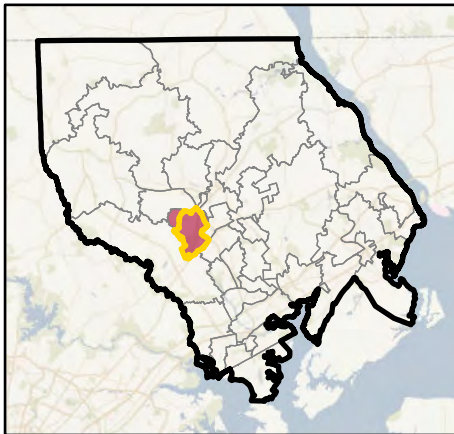


Advisory Team Elementary School Boundary Recommendation - Red Pump ES





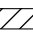



-  Elementary School
-  District Boundary
-  Advisory Team Elementary School Boundary Recommendation for Red Pump ES
-  Potential Change Area
- Current Configuration - Elementary Schools**
-  Red Pump ES Current Attendance Area
-  Elementary School Attendance Area Boundary Outline - Current Attendance Area

Potential Change Areas:
 CW-2: From Red Pump ES to Forest Lake ES
 CW-14: From Red Pump ES to Forest Lake ES

Overview Map



Advisory Team Elementary School Boundary Recommendation - Youth's Benefit ES

-  Elementary School
-  District Boundary
-  Advisory Team Elementary School Boundary
-  Recommendation for Youth's Benefit ES
-  Potential Change Area
- Current Configuration - Elementary Schools**
-  Youth's Benefit ES Current Attendance Area
-  Elementary School Attendance Area
-  Boundary Outline - Current Attendance Area

Potential Change Areas:
N-2: From Youth's Benefit ES to Jarrettsville ES

Overview Map

