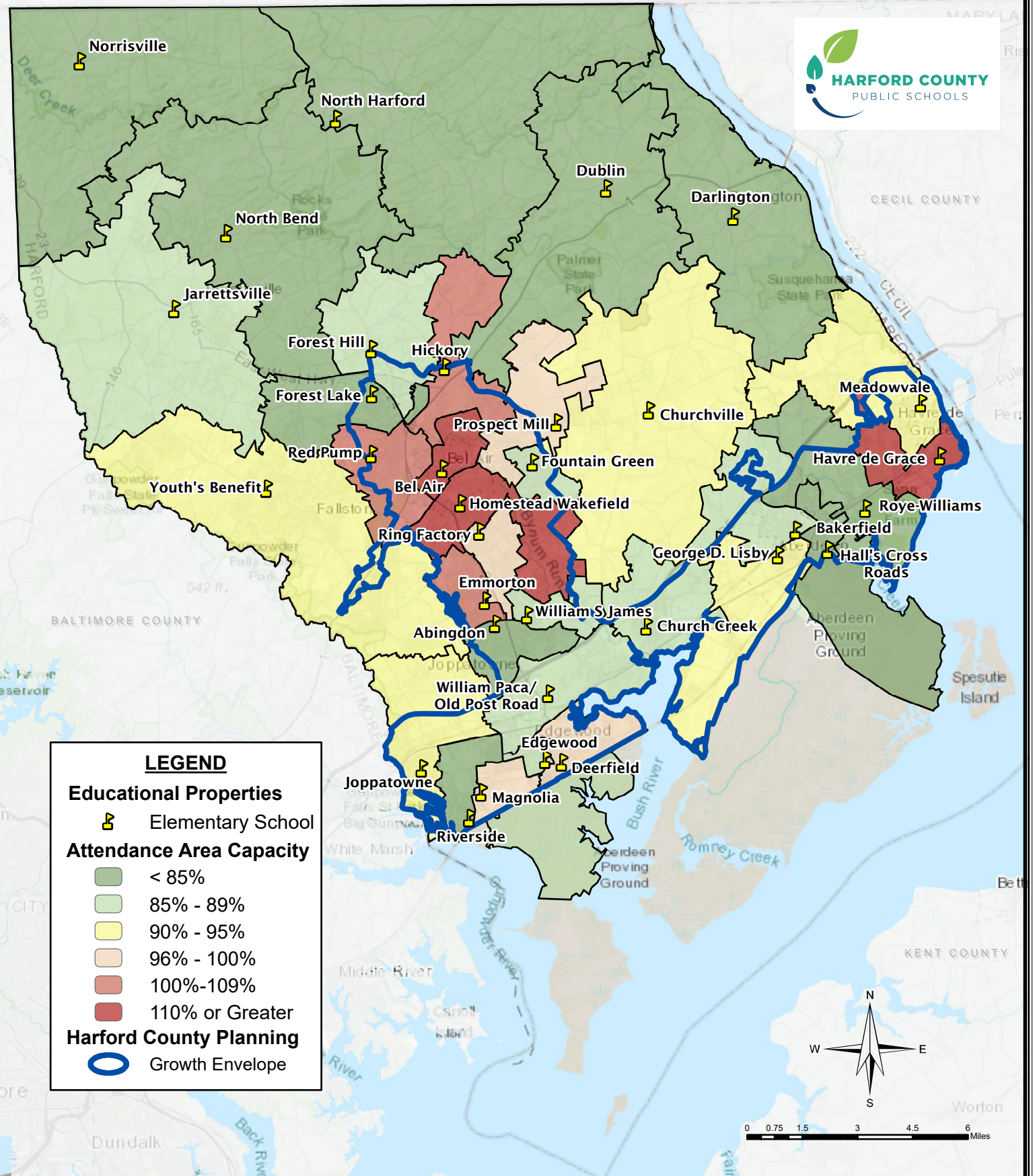


ELEMENTRY SCHOOL PERCENT CAPACITY

2019 - 2020 School Year



LEGEND

Educational Properties

Elementary School

Attendance Area Capacity

< 85%

85% - 89%

90% - 95%

96% - 100%

100%-109%

110% or Greater

Harford County Planning

Growth Envelope



0 0.75 1.5 3 4.5 6 Miles