



Harford County Government & Harford County Public Schools Shared Fleet Management Facility

*Presentation to the
Board of Education
October 11, 2021*



History

- Harford County 2015 County-wide Facility Master Plan

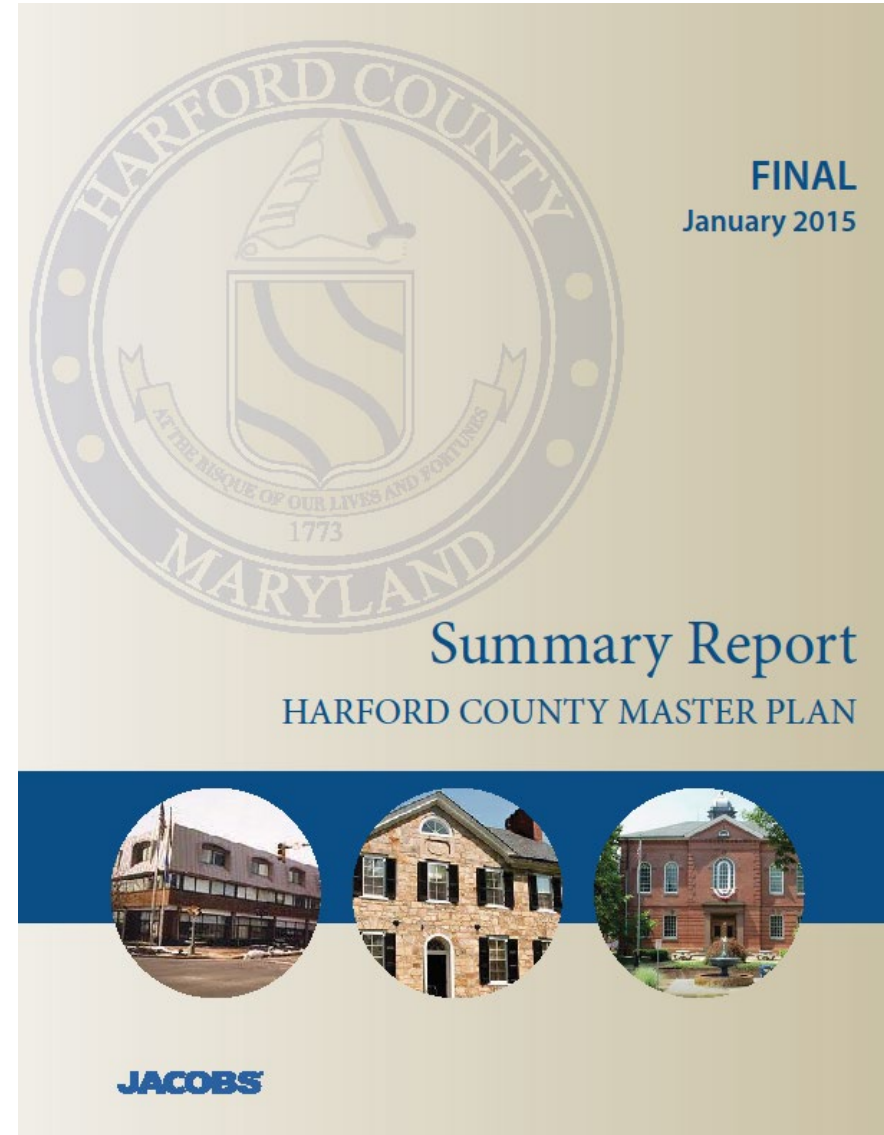
- Evaluated county facility resources
- Identified future requirements
- Provided data for operating budget planning
- Prioritized capital needs



- Included all agencies

- County Government
- Public Schools
- Public Library
- Community College
- Health Department
- Volunteer Fire Companies

Harford County, Maryland
Comprehensive Condition Assessment
State of Facilities Report
JANUARY 2015





History

- Facility Condition Ranking – Priority Group 1
 - County Government’s Fleet Maintenance facility prioritized 2nd
 - Public Schools’ Hickory Annex facilities prioritized 10th

Table 54: Summary Project Prioritization – Priority Group 1

Facility Name	Department	Total Score	Rank	Risks to Life Safety	FCI	Space Shortfall / Surplus	Final Rank	Priority Group
Circuit Courthouse	Judicial	61	1	High	0.1923	36%	1	1
Hickory II Fleet Maintenance	Dept of Public Works	60	2	High	0.9976	42%	2	1
Youth's Benefit Elementary School Intermediate Building	Schools	59	3	High	0.3876	23%	3	1
Homestead/Wakefield Elementary School Homestead Building	Schools	59	3	High	0.3412	19%	4	1
John Archer School/Infants and Toddlers	Multiuse	59	3	High	0.3261	67%	5	1
Wm Paca/Old Post Rd Elementary School Old Post Rd ES	Schools	59	3	High	0.2572	16%	6	1
Youth's Benefit Elementary School Primary Building	Schools	59	3	High	0.1251	36%	7	1
Sheriff's Headquarters	Sheriff's Office	57	8	Medium	0.2523	30%	8	1
Aberdeen Volunteer Fire Company 2	Emergency Operations	57	8	Low	0.4868	136%	9	1
Hickory Annex Public School Facilities	Schools	56	10	High	0.3597	25%	10	1
Wm Paca/Old Post Rd Elementary School Main Building (Wm Paca)	Schools	54	11	High	0.1585	21%	11	1
Prospect Mill Elementary School	Schools	54	11	High	0.1429	23%	12	1
Hickory Elementary School	Schools	54	11	High	0.1309	17%	13	1
Roye Williams Elementary School	Schools	54	11	High	0.1151	17%	14	1
Center for Ed. Opportunity/Teen Diversion	MultiUse	53	15	High	0.2656	0%	15	1
Wm S. James Elementary School	Schools	52	16	High	0.2456	22%	16	1
Darlington Public Library	Library	52	16	Medium	0.4091	77%	17	1
Fallston High School	Schools	50	18	Medium	0.3176	3%	18	1

PROJECT PRIORITIZATION - SUMMARY RESULTS

The following table is a ranked prioritization list, broken down by priority group, with the final rank determined by sorting using Total Score, Risks to Life Safety, FCI, and Space Shortfall / Surplus scores in sequential order and from high to low. Below is a summary of these elements:

- Total Score – the total number of points received, with a maximum possible score of 80. A higher score would equate to a higher rank.
- Risk to Life Safety – the potential degree of risks to life safety that exists within a facility. A facility with a high potential risk to life safety gets a higher prioritization score.
- Facility Condition Index (FCI) - captures the overall condition of an existing facility. A higher FCI score is associated with a poorer facility condition. A facility with poorer condition (i.e. higher FCI) gets a higher prioritization score. Any facility with an FCI larger than 65 percent is a replacement candidate.
- Space Shortfall/Surplus - indicates how much space shortfall or surplus exists at a facility based on the current staffing and industry standards. A facility with a large space shortfall or surplus gets a higher prioritization score.

Table 54: Summary Project Prioritization – Priority Group 1

Facility Name	Department	Total Score	Rank	Risks to Life Safety	FCI	Space Shortfall / Surplus	Final Rank	Priority Group
Circuit Courthouse	Judicial	61	1	High	0.1923	36%	1	1
Hickory II - Fleet Maintenance	Dept of Public Works	60	2	High	0.9976	42%	2	1
Youth's Benefit Elementary School - Intermediate Building	Schools	59	3	High	0.3876	23%	3	1
Homestead/Wakefield Elementary School - Homestead Building	Schools	59	3	High	0.3412	19%	4	1
John Archer School/Infants and Toddlers	Multi-Use	59	3	High	0.3261	67%	5	1
Wm Paca/Old Post Rd Elementary School - Old Post Rd ES	Schools	59	3	High	0.2572	16%	6	1
Youth's Benefit Elementary School - Primary Building	Schools	59	3	High	0.1251	36%	7	1
Sheriff's Headquarters	Sheriff's Office	57	8	Medium	0.2523	30%	8	1
Aberdeen Volunteer Fire Company 2	Emergency Operations	57	8	Low	0.4868	136%	9	1
Hickory Annex - Public School Facilities	Schools	56	10	High	0.3597	25%	10	1
Wm Paca/Old Post Rd Elementary School - Main Building (Wm Paca)	Schools	54	11	High	0.1585	21%	11	1
Prospect Mill Elementary School	Schools	54	11	High	0.1429	23%	12	1
Hickory Elementary School	Schools	54	11	High	0.1309	17%	13	1
Roye-Williams Elementary School	Schools	54	11	High	0.1151	17%	14	1
Center for Ed. Opportunity/Teen Diversion	Multi-Use	53	15	High	0.2656	0%	15	1
Wm S. James Elementary School	Schools	52	16	High	0.2456	22%	16	1
Darlington Public Library	Library	52	16	Medium	0.4091	77%	17	1
Fallston High School	Schools	50	18	Medium	0.3176	3%	18	1



History

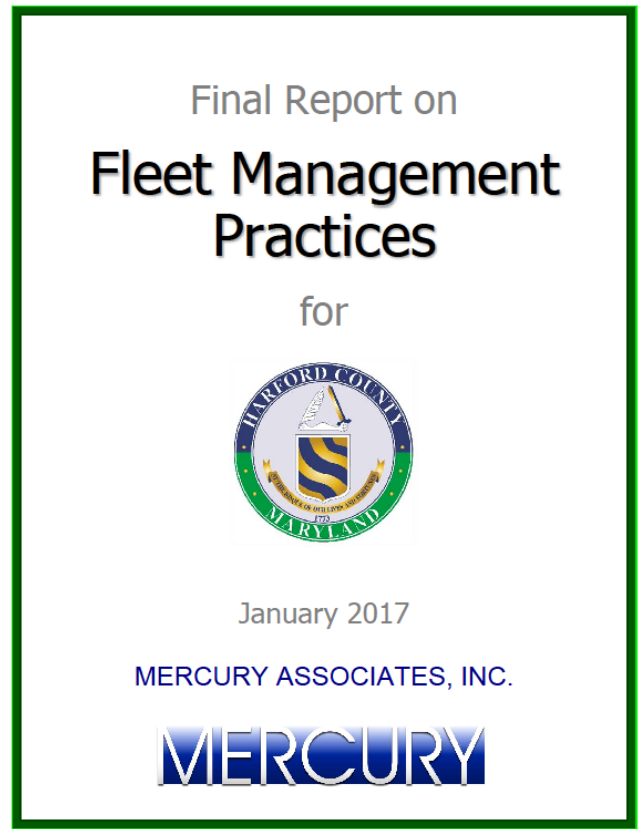
- 2016 New County Administration
 - Current Harford County Government and Harford County Public School's Administration met to discuss possible joint projects and collaboration.
 - Fleet management processes, infrastructure and facilities identified as a possible consolidation effort.
- 2016 Harford County and Board of Education Fuel Services
 - MOU executed to consolidate the management of fuel sites and fueling transactions.
 - Utilization of a single fuel management information system.
 - Board of Education able to abandon antiquated fuel sites.
- 2016 Contract with Mercury Associates, Inc.
 - Fleet Management Process and Infrastructure Improvement Study.
 - Identify, develop and implement strategies for improving effectiveness and efficiency of both organization's fleet operation.



History

- Harford County 2017 Fleet Management Study Report
 - Fleet Management Practices
 - Feasibility of Fleet Management Program Consolidations
 - Fleet Replacement Practices

- Additional Fleet Management Evaluation (Mercury Associates, Inc.)
 - Fleet Rightsizing – 2019
 - Harford County eliminated 28 vehicles and enhanced fleet pool
 - Board of Education eliminated 4 vehicles
 - Fleet Modernization & Cost Reduction - 2019
 - Consolidation Cost Savings Analysis – 2019
 - Identified parts management cost savings and inventory control
 - Fleet Management/Maintenance Facility Assessment – 2019
 - Identified opportunities for a joint use facility
 - Fleet Management Information Systems Assessment – 2020
 - Board of Education’s FMIS was operating an outdated version of *Fleet Focus*
 - Board of Education transitioned to Harford County’s FMIS (FASTER)





Harford County Fleet Management Facility

- Fleet Management/Maintenance Facility (77k SF facility)
 - 1304 Enterprise Court
 - Entered into MOU for joint use facility on June 4, 2021
 - \$17,465,000.00 Construction Cost (Plano-Coudon, LLC)
 - Planning & Design – 2019
 - Construction – 2021
 - Shared Occupancy – January 2022



Fleet Management/Maintenance Facility

- Building Rendering





Fleet Management/Maintenance Facility

• Floor Plan

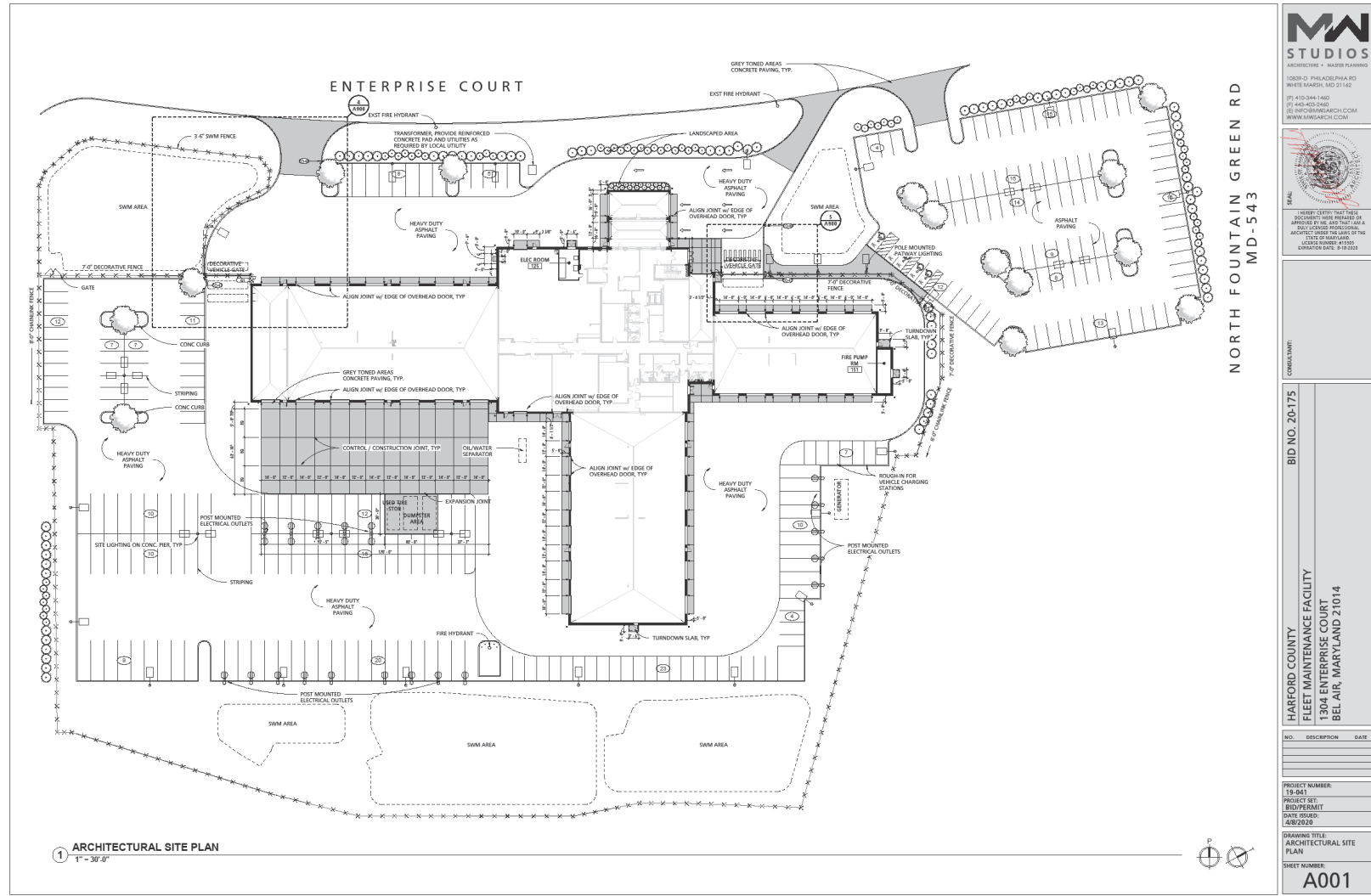


PRELIMINARY - NOT FOR CONSTRUCTION



Fleet Management/Maintenance Facility

• Site Plan





Fleet Management/Maintenance Facility

- Benefits & Opportunities
 - Reduction in operating costs associated with one facility
 - Overall under-roof footprint requirements reduced
 - Shared conference, training, break and restrooms
 - Single bulk fluid distribution room, single air compressor room
 - Efficient parts management and inventory control
 - Board of Education purchasing inventory from First Vehicle Services Contract

- Future Collaboration



Questions and Discussion