



Amtrak Susquehanna River Rail Bridge Project

Harford County Public School Board

June 10, 2024



Agenda

- Project Overview
- Project Status
- Proposed Harris Field Improvements
- Public Outreach & Community Engagement
- Q&A



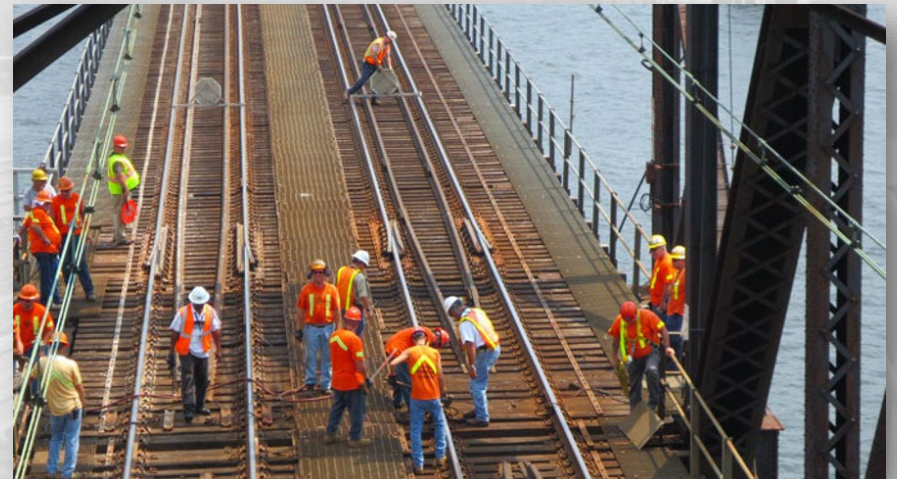
Project Overview

Existing Bridge

- 117-year-old 2-track bridge between the Town of Perryville and the City of Havre de Grace, Maryland
- Critical link along Amtrak's Northeast Corridor
- Aging infrastructure has speed and capacity constraints, operational inflexibility, and maintenance difficulties



Susquehanna River Rail Bridge opening for marine traffic.



Amtrak crews manually opening moveable span of the bridge.

Current Operations

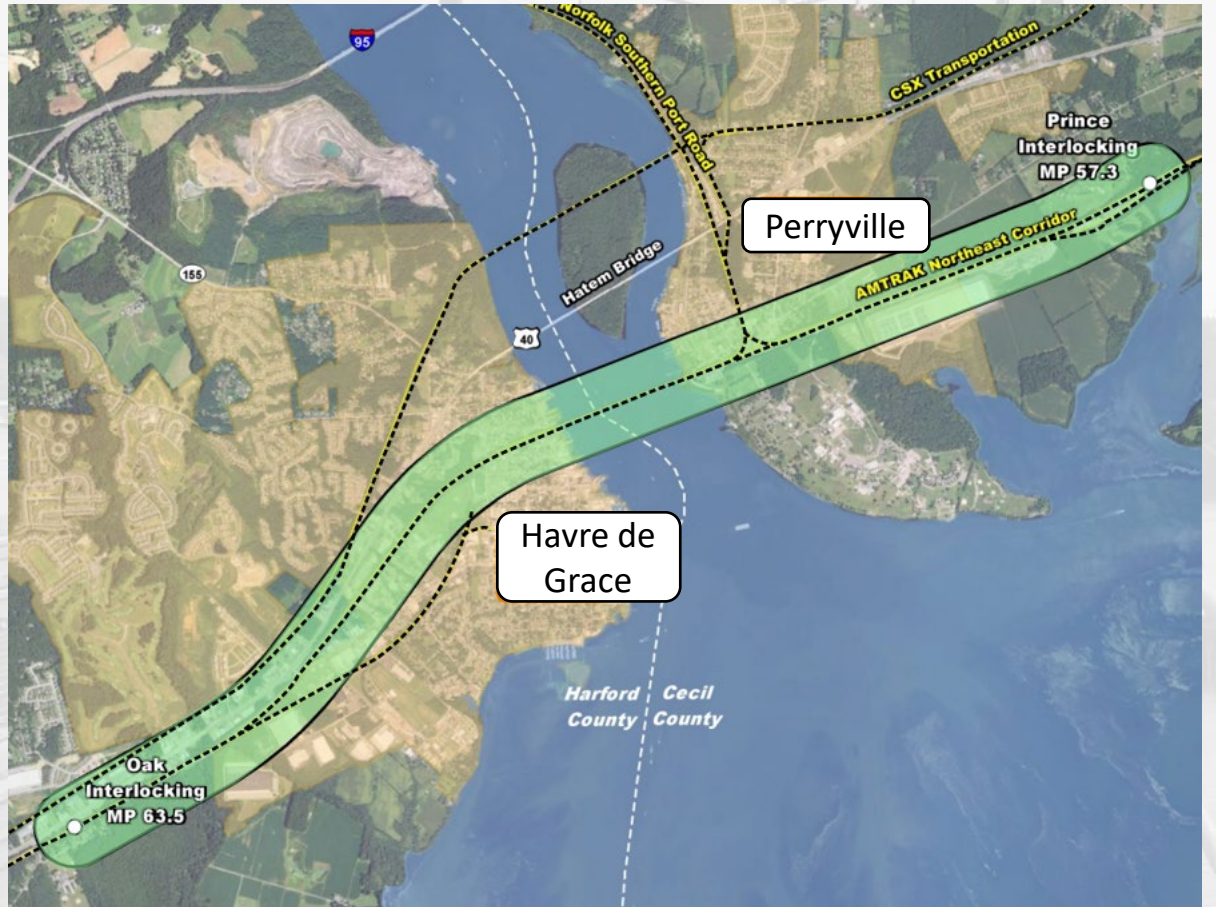
- Supports three railroads:
 - Amtrak – 80-90 trains per day
 - Maryland Area Regional Commuter (MARC) – 12-14 trains per day
 - Norfolk Southern – 8-10 trains per day
- CSX has operational rights



Train crossing Susquehanna River Rail Bridge

Project Components

- Replace existing 2-track bridge with two new 2-track bridges
- Modernize and improve track, catenary, and signals
- Five route miles of track realignment and reconstruction consisting of:
 - 3 interlockings
 - 2 tracks dedicated for Amtrak high speed
 - 2 tracks primarily for MARC and Norfolk Southern



Project Benefits

- Continued rail connectivity along the Northeast Corridor with ability to accommodate future operations
- Improved rail service reliability, operational flexibility, and capacity
- Decreased trip times
- Improved rail and navigation safety
- Greater employment opportunities through continued development

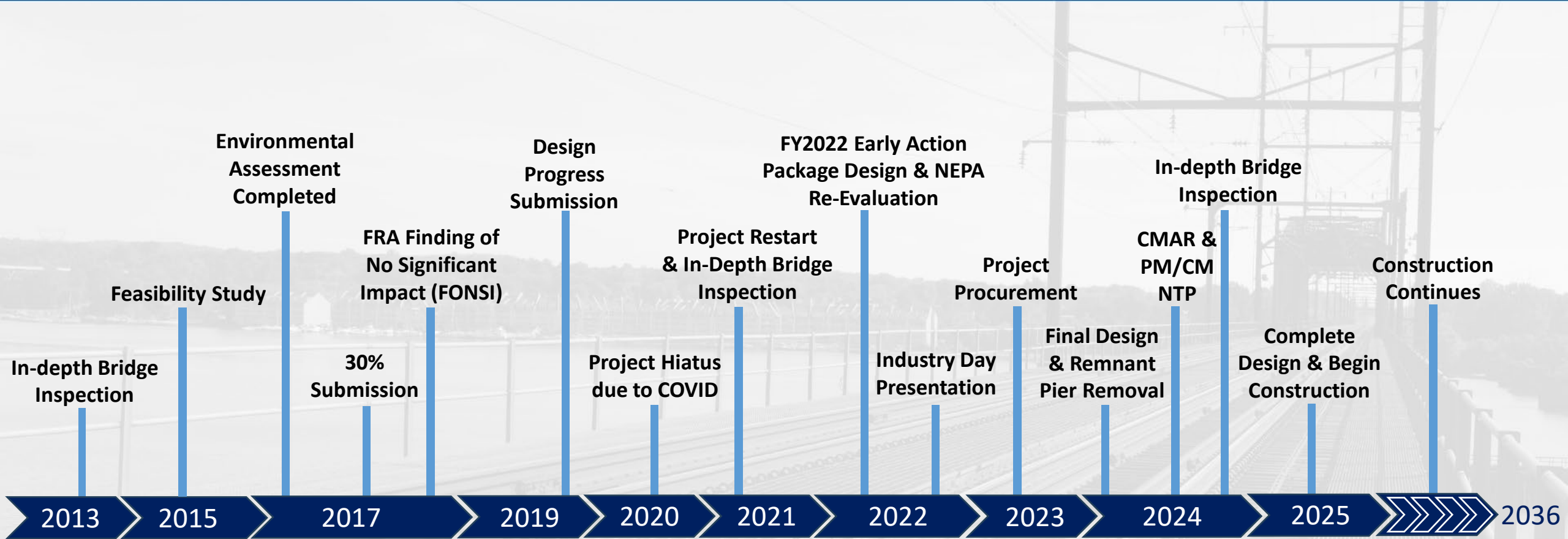


MARC train crossing Susquehanna River Rail Bridge.



Project Status

Project Timeline



Progress to Date

- Environmental Assessment completed in 2017
 - Comprehensive study to assess environmental impacts was conducted and made public for comment
 - Finding of No Significant Impact (FONSI) marked the end of the project's environmental review phase
 - FONSI identified the environmental, cultural, and community commitments throughout the duration of the project



Public meeting in the Town of Perryville to provide project information and receive comments on the project's Environmental Assessment.

Progress to Date (Cont.)

- Following the environmental review phase (2017), project design advanced and federal funding was secured
- Project procurement occurred in 2023:
 - Construction-Manager-at-Risk (CMAR) – Flatiron-Herzog
 - Project Management/Construction Management (PM/CM) – AECOM
 - Remnant Pier Removal – Fay Construction



Susquehanna River Rail Bridge & shoreline

Upcoming Work

- **2024-2025**
 - Early Action/Enabling Projects – construction work to prepare the site for the construction of the two new bridges
 - 1866 Remnant Pier Removal work started 2/5/2024 (bird deterrent netting installation) to improve safety and navigation
 - Baltimore Gas and Electric (BGE) tower relocation in Town of Perryville
 - 90% Design and Final Construction Documents



The 1866 remnant piers adjacent to the existing Susquehanna River Rail Bridge



The existing BGE tower located across from Rodgers Tavern in the Town of Perryville, Maryland.

Upcoming Work (Cont.)

- **2025**
 - Anticipated Construction Notice to Proceed (NTP)
- **2031**
 - Completion of West Bridge and demolition of existing bridge
- **2036**
 - Completion of East Bridge



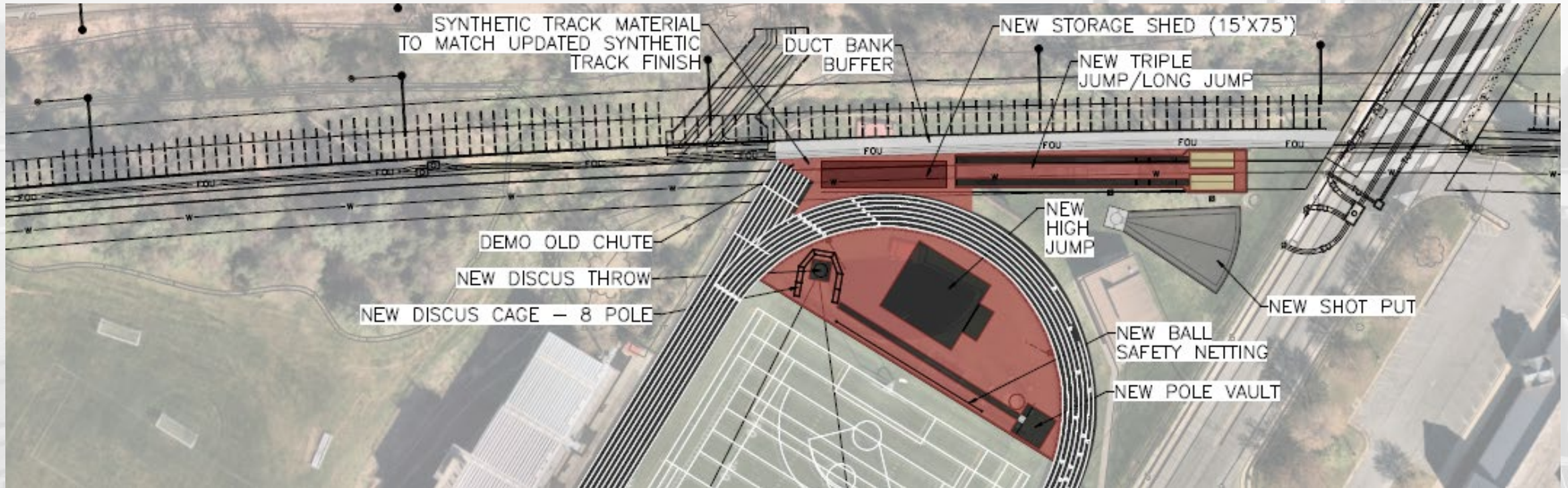
Illustrative rendering of the new bridges



Proposed Harris Field Improvements

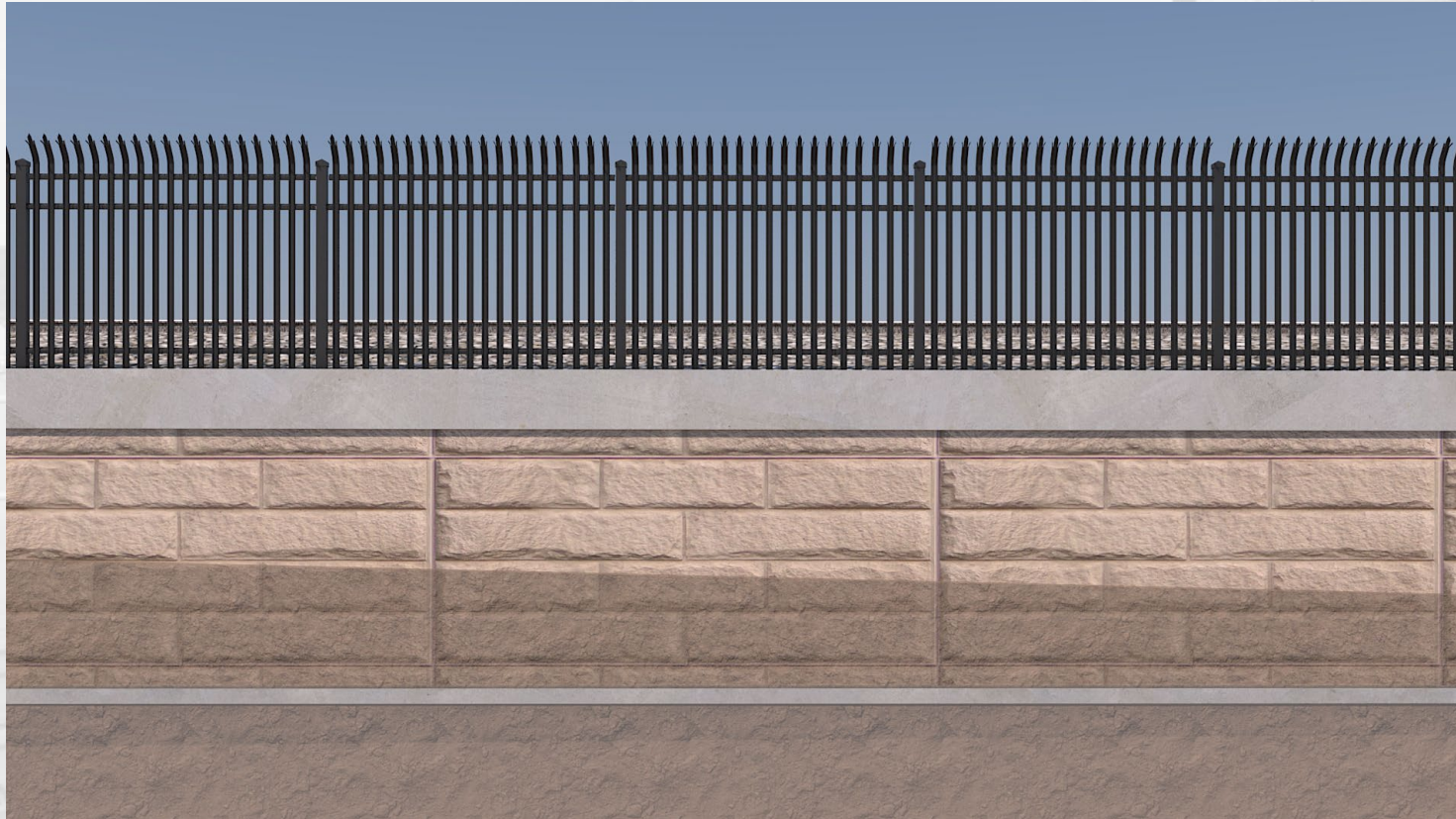
Harris Field Improvements

- Railroad corridor is widening
- Encroaches on the north end of the field
- Requires mitigation and improvements to the field



Harris Field Improvements (Cont.)

- Retaining Wall structures



Illustrative rendering of the new retaining wall structure



Public Outreach & Community Engagement

Amtrak Office of Community Engagement

- Engage with communities before, during, and after Project
- Serve as a conduit for feedback and concerns and enhance relationships as a community partner



Project team participated in Havre de Grace's December 2023 Holly Jolly and May 2024 First Friday.

How to Stay Informed

- Project Hotline: 844-SUS-RAIL or 844-787-7245
- Project Email: SRBProject@amtrak.com
- Quarterly Newsletter ([sign up here](#))
- [Website](#)
- [General Fact Sheet](#)
- [FAQ Page](#)



Project fact sheets & newsletters available on the project website.



Mailing list signup

Q&A





Thank You