

STUDENT DISCIPLINE LAWS



SCHOOL
SAFETY

BUZZ WILLIAMS

- 1999-2003 Principal Kennedy Krieger High School
- 2003-2009 Assistant Principal Harford County Public Schools
- 2009-2024 Superintendent's Student Discipline Designee
- Nationally Certified Administrative Hearing Official
- Instructor, Hearing Official Certification



Create laws



MARYLAND
GENERAL ASSEMBLY

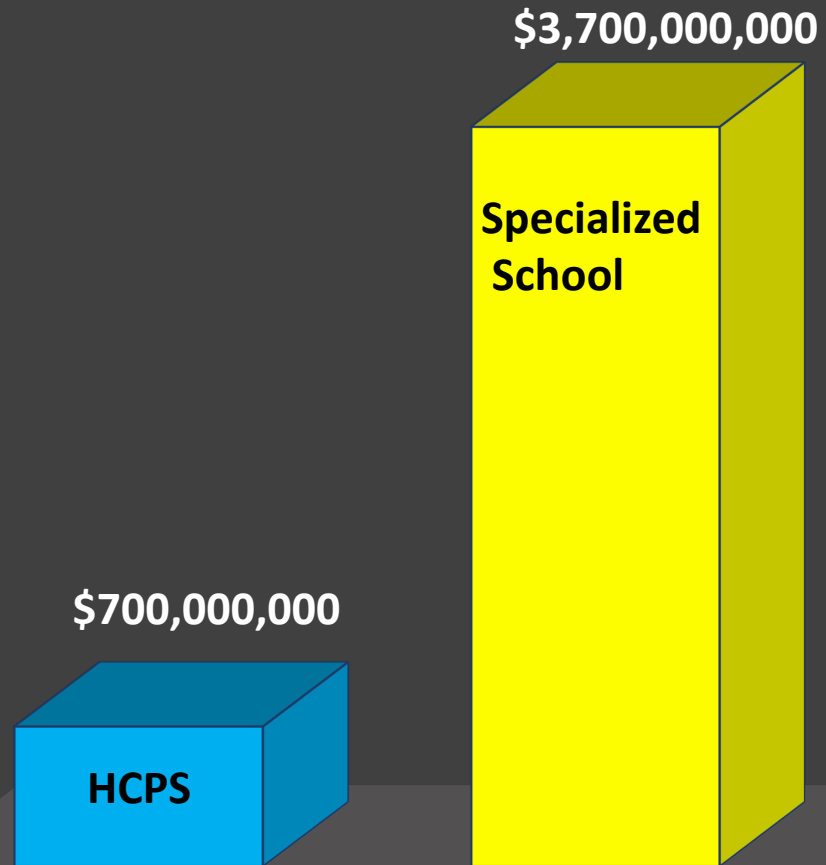
Create regulations



MARYLAND STATE DEPARTMENT OF
EDUCATION

EQUITY AND EXCELLENCE

FUNDING COMPARISON



Funding HCPS like a specialized behavior management school would require an additional 3 billion dollars per year.

Estimate based on \$100,000 tuition per student X 37,000 students

REDEFINED

~~Expulsion~~

~~permanent removal~~

Expulsion

Suspension > 45 days with:

1. Educational Services
2. Reentry Plan

The law requires a plan for expelled students to return to their regular schools.

A young woman with long brown hair, wearing a red shirt, is sitting at a desk in a classroom. She is looking to her right with a mischievous expression, blowing a large bubble with gum. She is holding a black smartphone in her hands. In the background, a green chalkboard is visible with some faint, illegible writing. The overall scene suggests a student being disruptive in class.

DISRUPTION

Expulsion is illegal for disruption.

Principals can suspend up to 10 days.

The Superintendent can suspend up to 45 days.



IMMINENT THREAT

Principals can suspend up to 10 days.

The Superintendent can only expel (suspend 46 or more days) if the student is “likely an immediate danger of significant physical injury.”

SCHOOLS THREATS



PreK-2nd Grade

Principals can suspend up to 5 days only if the student continues to be an imminent threat of serious physical harm after interventions as determined by a mental health professional.

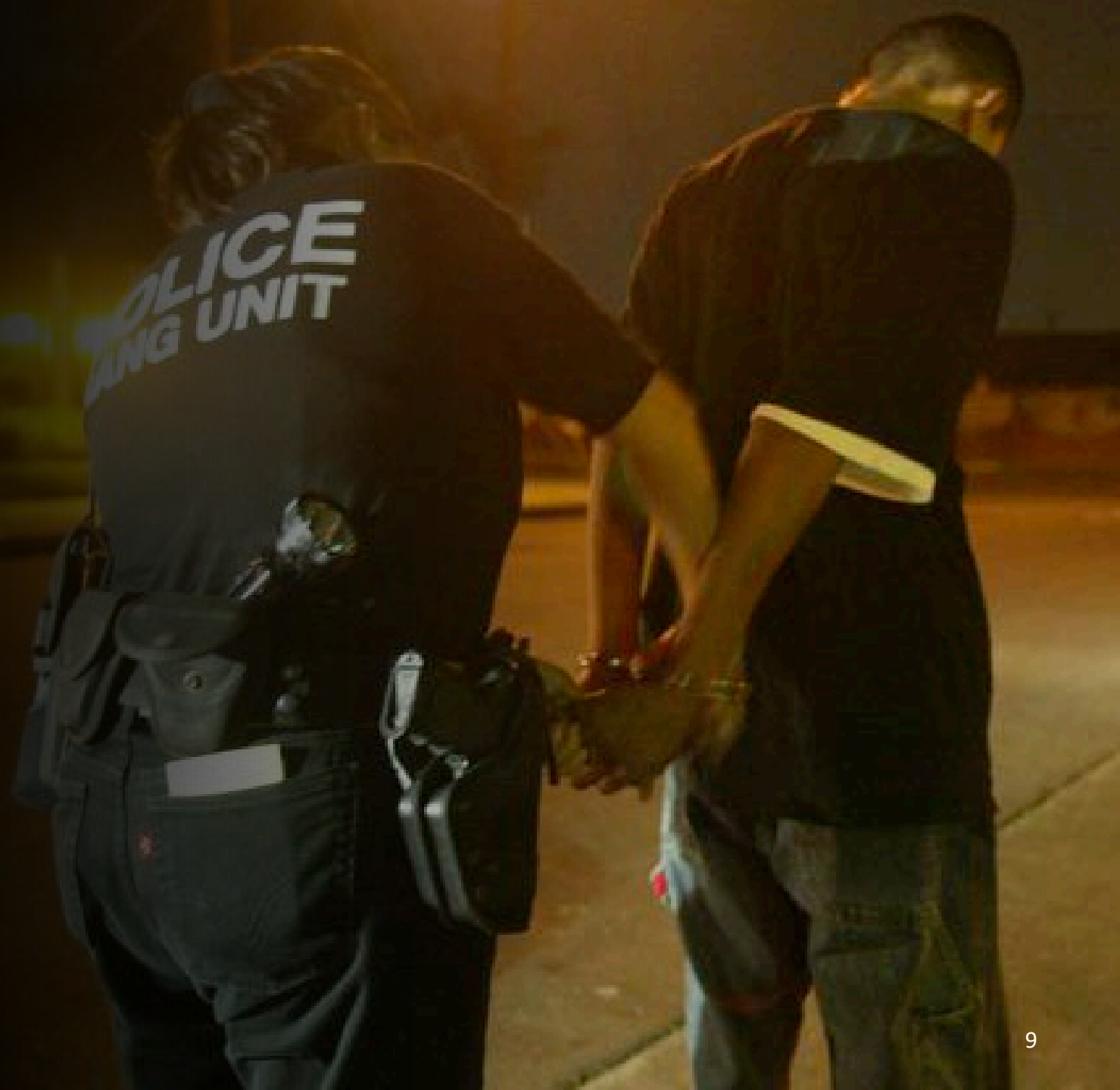
This criteria makes PreK-2nd grade suspension practically illegal.



REPORTABLE OFFENSES

The reportable offense law allows the removal of students charged with serious crimes before they go to court.

The imminent threat criteria makes removing charged students illegal in many cases.





- Lawsuits
- Fund Reallocation
- MSDE Oversight
- Public Protest

STUDENT DISCIPLINE LAWS



**SCHOOL
SAFETY**