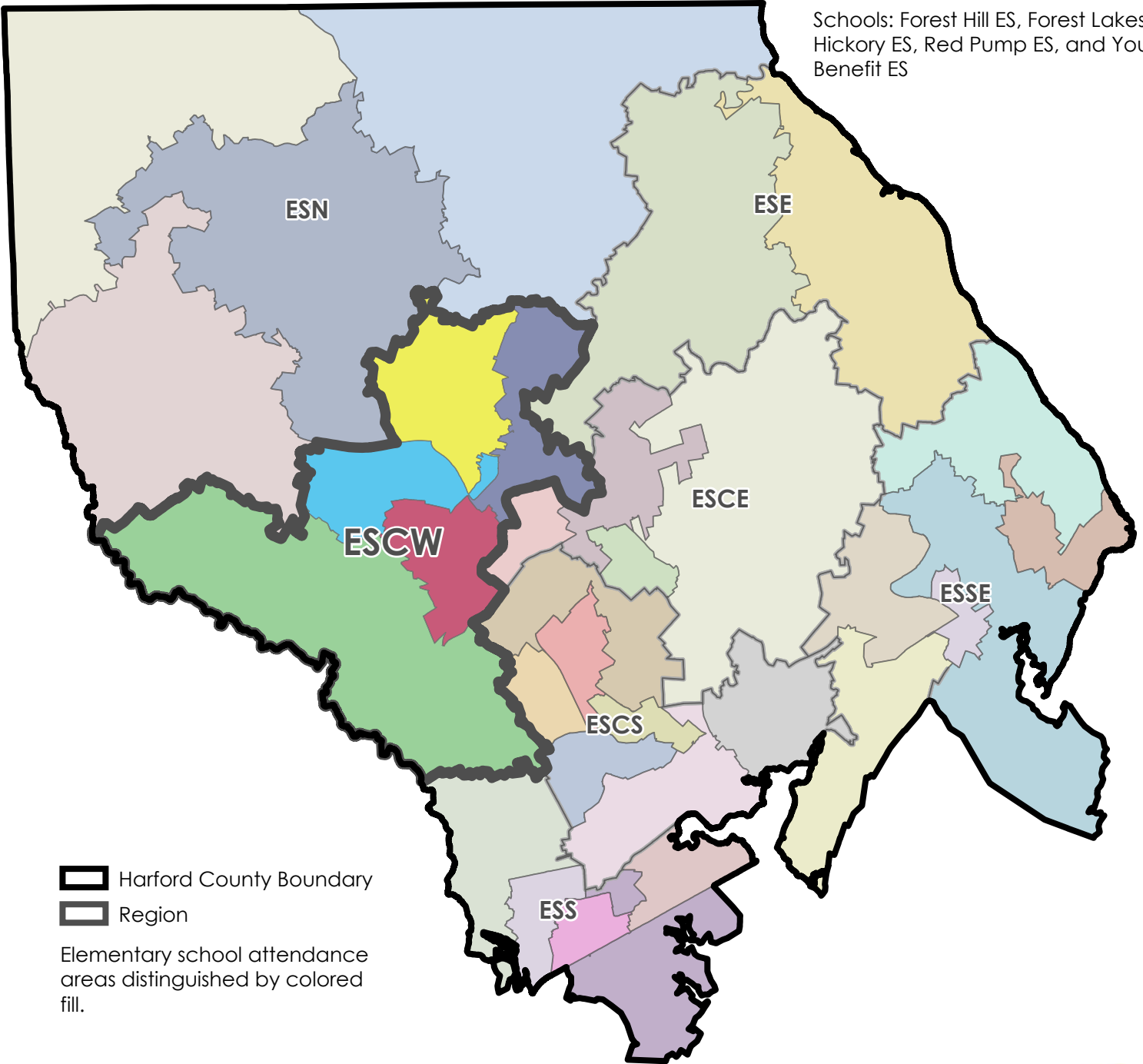


Community Education Forum (CEF) Region Elementary School Center West (ESCW)

Schools: Forest Hill ES, Forest Lakes ES, Hickory ES, Red Pump ES, and Youth's Benefit ES



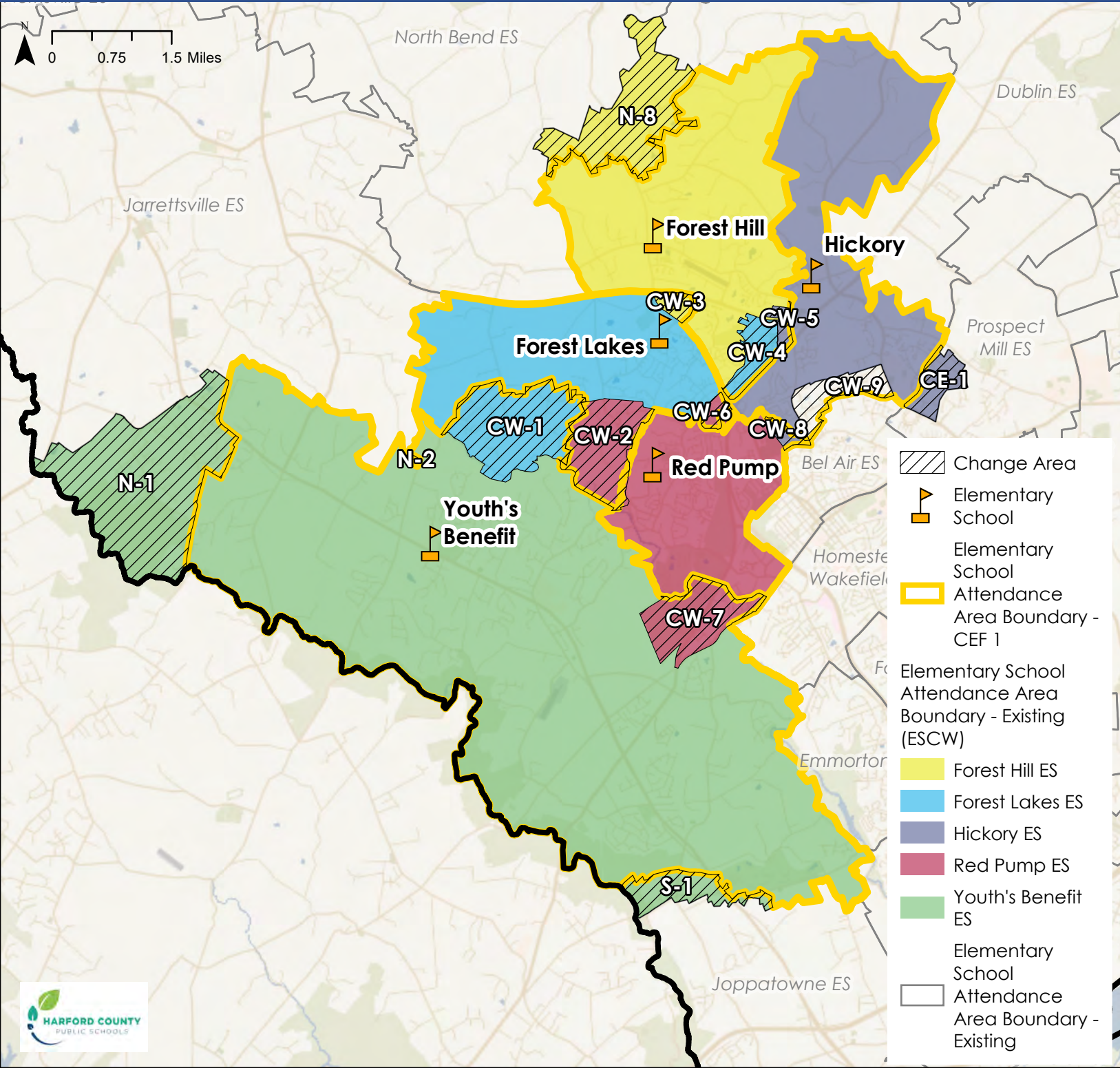
Harford County Boundary
Region

Elementary school attendance areas distinguished by colored fill.

N
0 1.5 3 Miles

District Overview - CEF 1


Elementary School Center West (ESCW)



CEF 1 - Forest Hill ES


 Elementary School

 District Boundary

 Elementary School Attendance Area Boundary - CEF 1

 Elementary School Attendance Area Boundary - Existing

 Forest Hill ES

 Elementary School Attendance Area Boundary - Existing (Outline)

 Potential Change Area

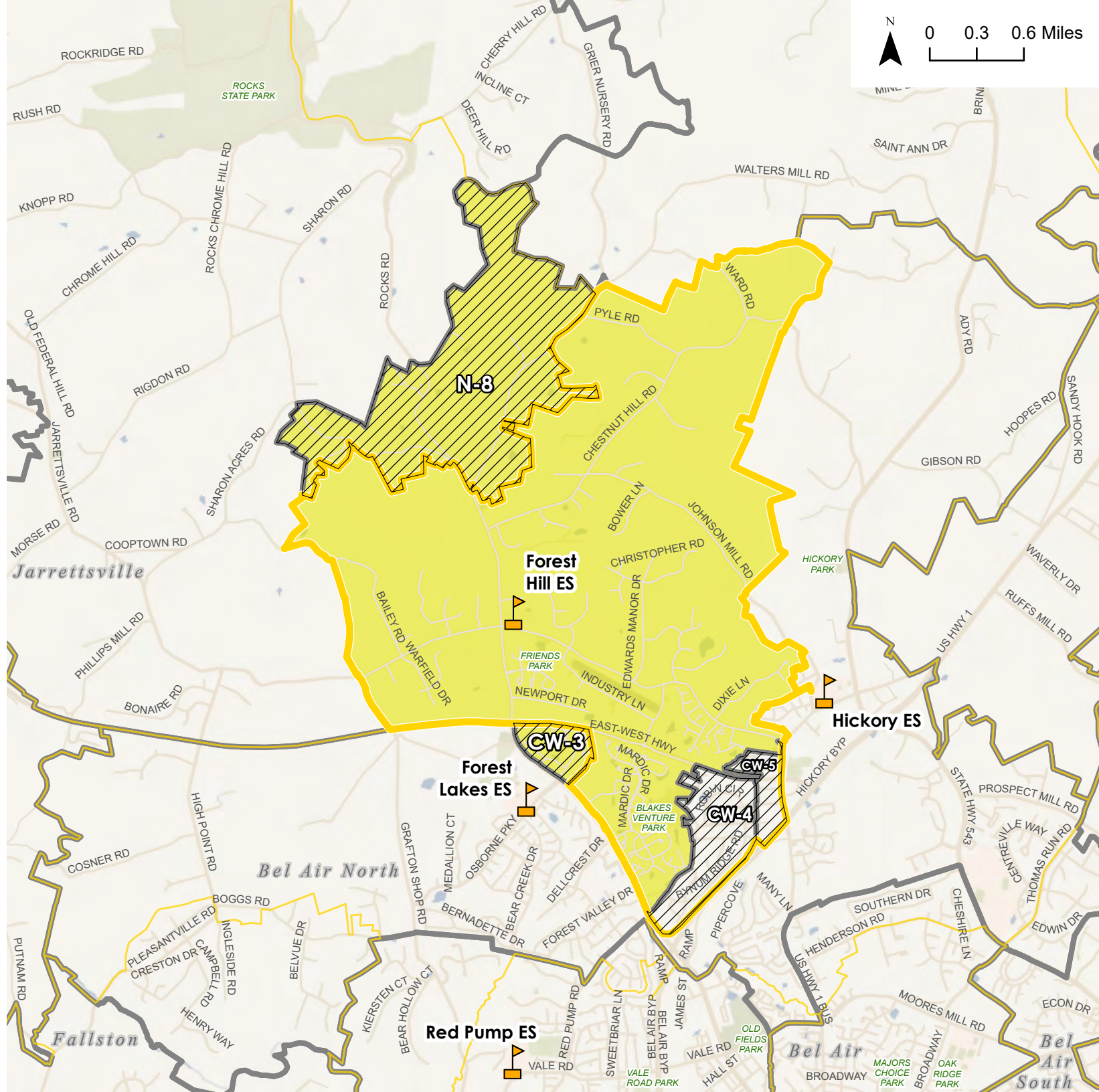
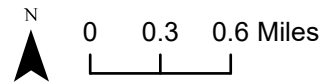
Potential Change Areas:

N-8: From Forest Hill ES to North Bend ES

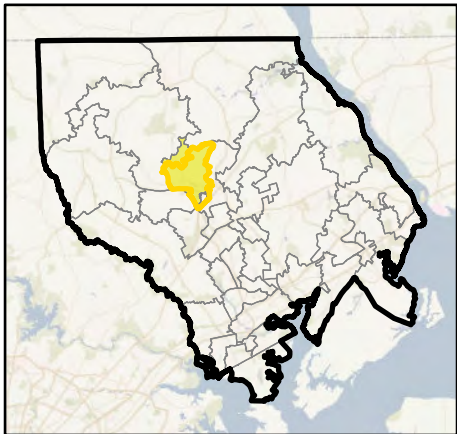
CW-3: From Forest Hill ES to Forest Lake ES

CW-4: From Forest Lakes ES to Forest Hill ES

CW-5: From Hickory ES to Forest Hill ES



Overview Map



CEF 1 - Forest Lakes ES

- Elementary School
- District Boundary

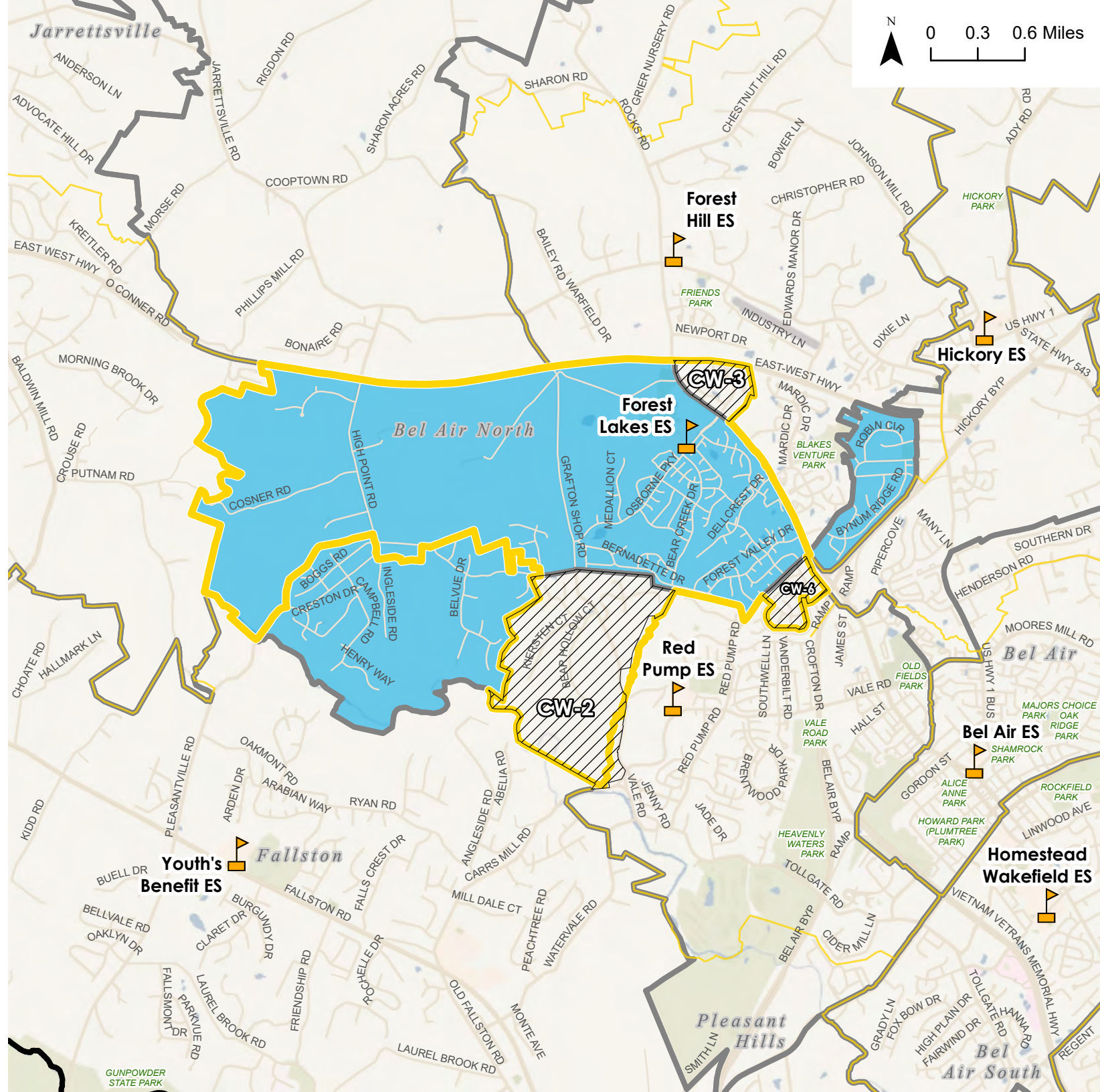
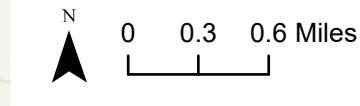
- Elementary School Attendance Area Boundary - Existing
- Elementary School Attendance Area Boundary - Potential Change Area

Elementary School Attendance Area Boundary - Existing

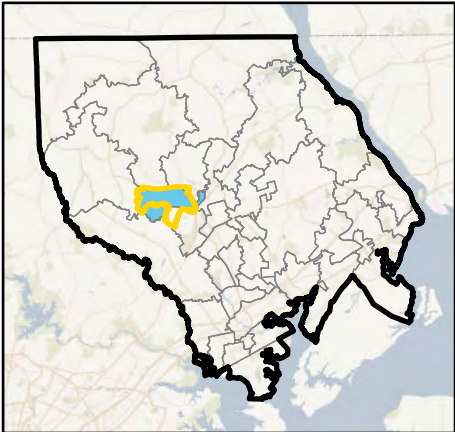
- Forest Lakes ES
- Elementary School Attendance Area Boundary - Existing (Outline)
- Potential Change Area

Potential Change Areas:

- CW-2: From Red Pump ES to Forest Lake ES
- CW-3: From Forest Hill ES to Forest Lake ES
- CW-6: From Red Pump ES to Forest Lake ES




Overview Map

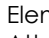


CEF 1 - Hickory ES


 Elementary School

 District Boundary

 Elementary School Attendance Area Boundary - CEF 1

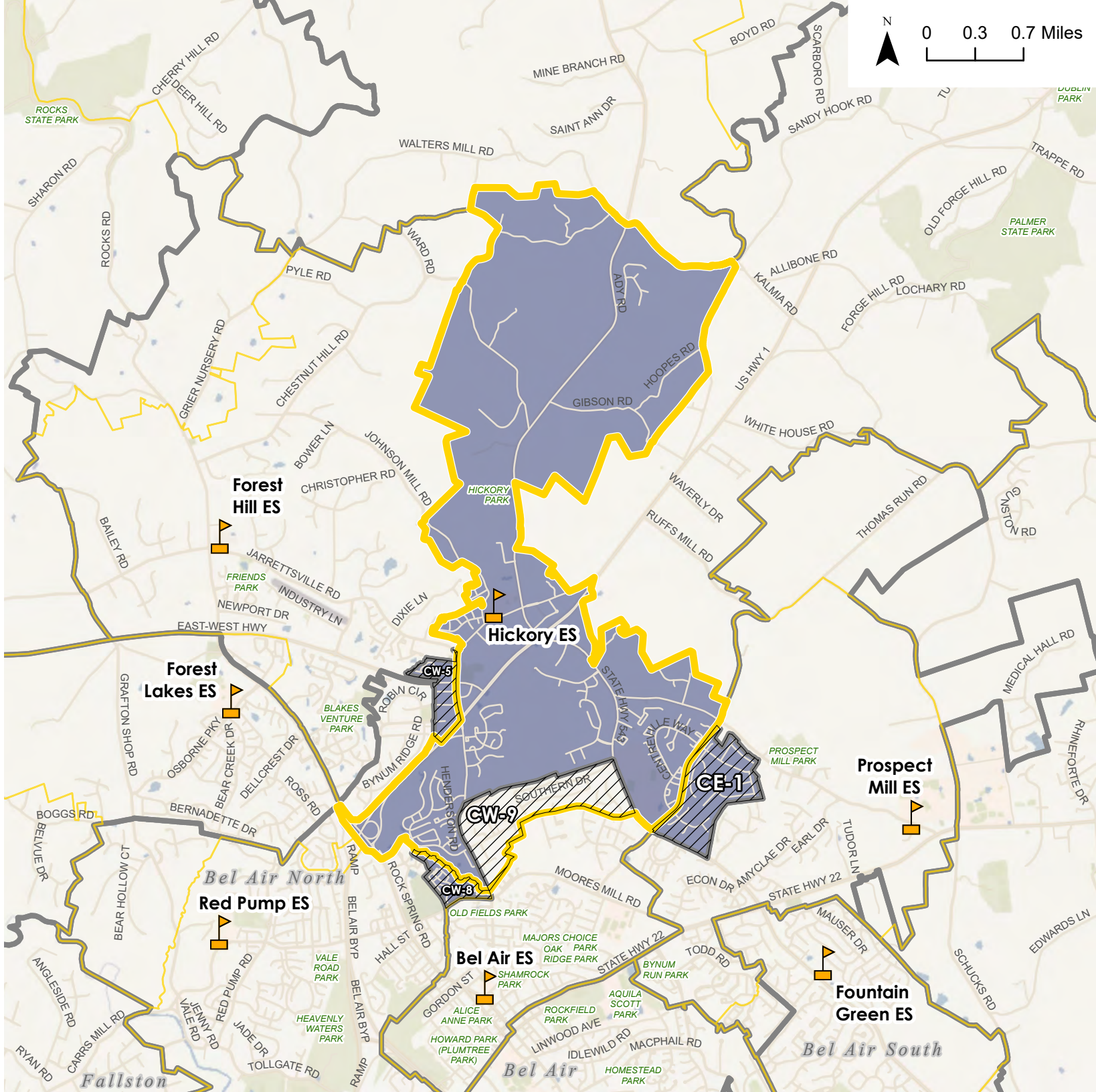
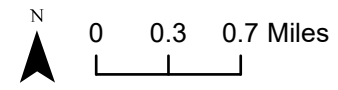
 Elementary School Attendance Area Boundary - Existing

 Hickory ES

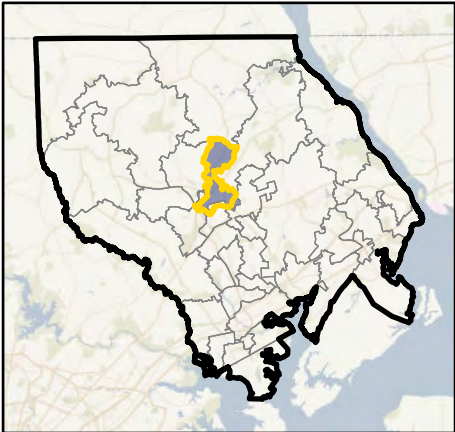
 Elementary School Attendance Area Boundary - Existing (Outline)

 Potential Change Area


Potential Change Areas:
 CW-5: From Hickory ES to Forest Hill ES
 CW-8: From Hickory ES to Red Pump ES
 CE-1: From Hickory ES to Prospect Mill ES
 CW-9: From Bel Air ES to Hickory ES




Overview Map




CEF 1 - Red Pump ES


 Elementary School


 District Boundary

 Elementary School Attendance Area Boundary - CEF 1

 Elementary School Attendance Area Boundary - Existing

 Red Pump ES

 Elementary School Attendance Area Boundary - Existing (Outline)

 Potential Change Area

Potential Change Areas:

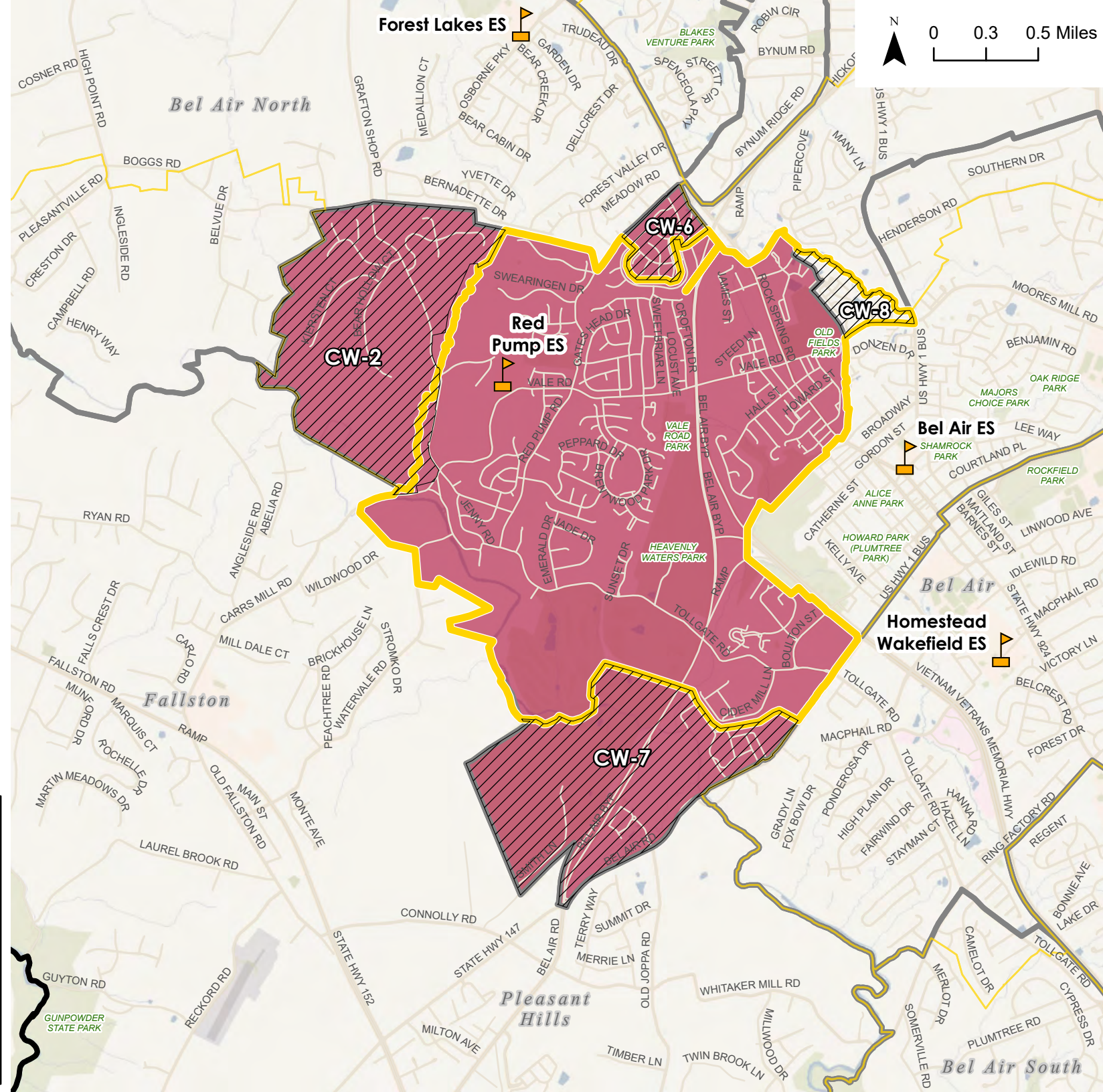
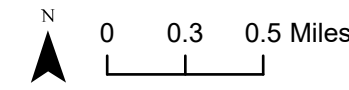
CW-2: From Red Pump ES to Forest Lake ES

CW-6: From Red Pump ES to Forest Lake ES

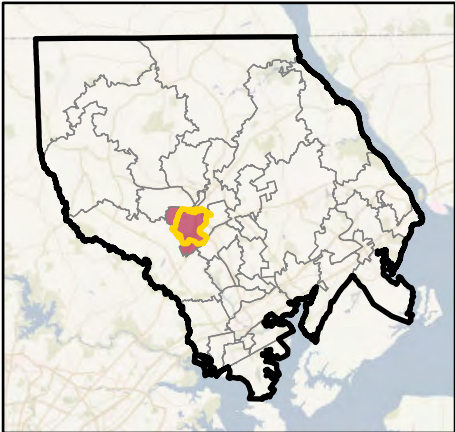
CW-7: From Red Pump ES to Youth's Benefit ES

CW-8: From Hickory ES to Red Pump ES

Forest Lakes ES




Overview Map

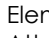



CEF 1 - Youth's Benefit ES


 Elementary School

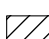
 District Boundary

 Elementary School Attendance Area Boundary - Existing

 Elementary School Attendance Area Boundary - Existing

 Youth's Benefit ES

 Elementary School Attendance Area Boundary - Existing (Outline)

 Potential Change Area

Potential Change Areas:

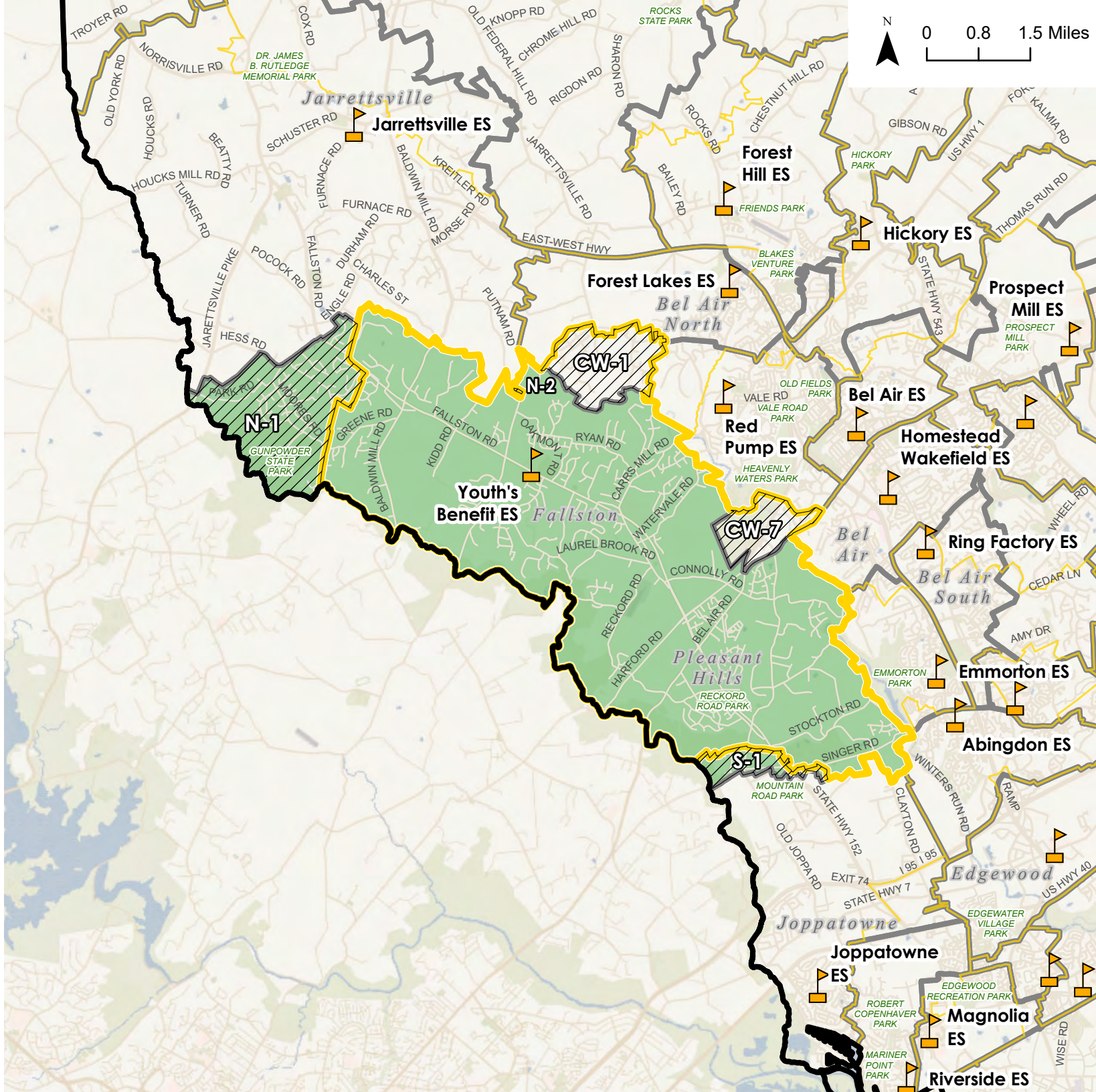
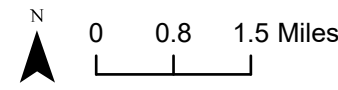
N-1: From Youth's Benefit ES to Jarrettsville ES

N-2: From Youth's Benefit ES to Jarrettsville ES

S-1: From Youth's Benefit ES to Joppatowne ES

CW-1: From Forest Lakes ES to Youth's Benefit ES

CW-7: From Red Pump ES to Youth's Benefit ES



Overview Map

