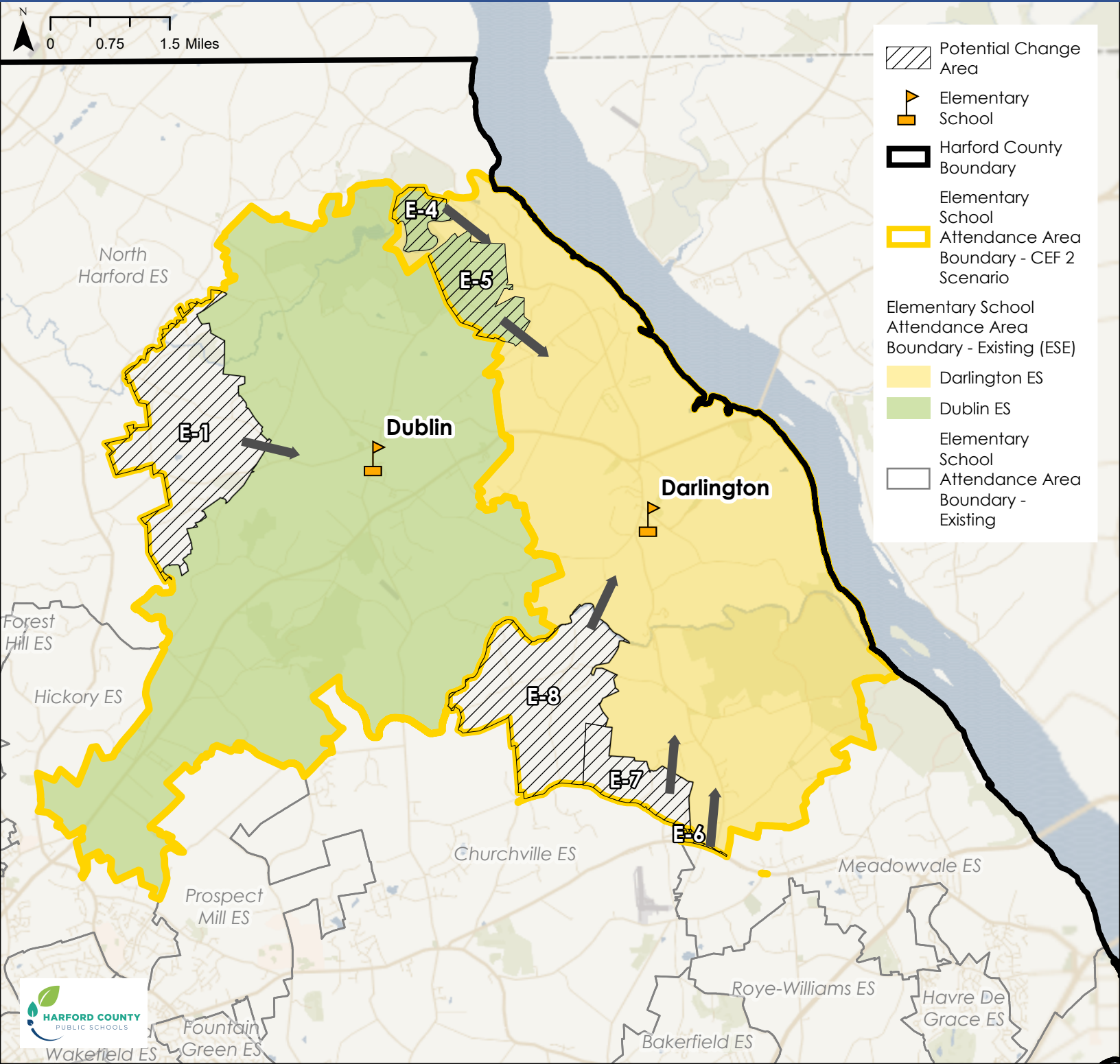



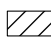





# District Overview - CEF 2 Elementary School Scenario

## Elementary School East (ESE)

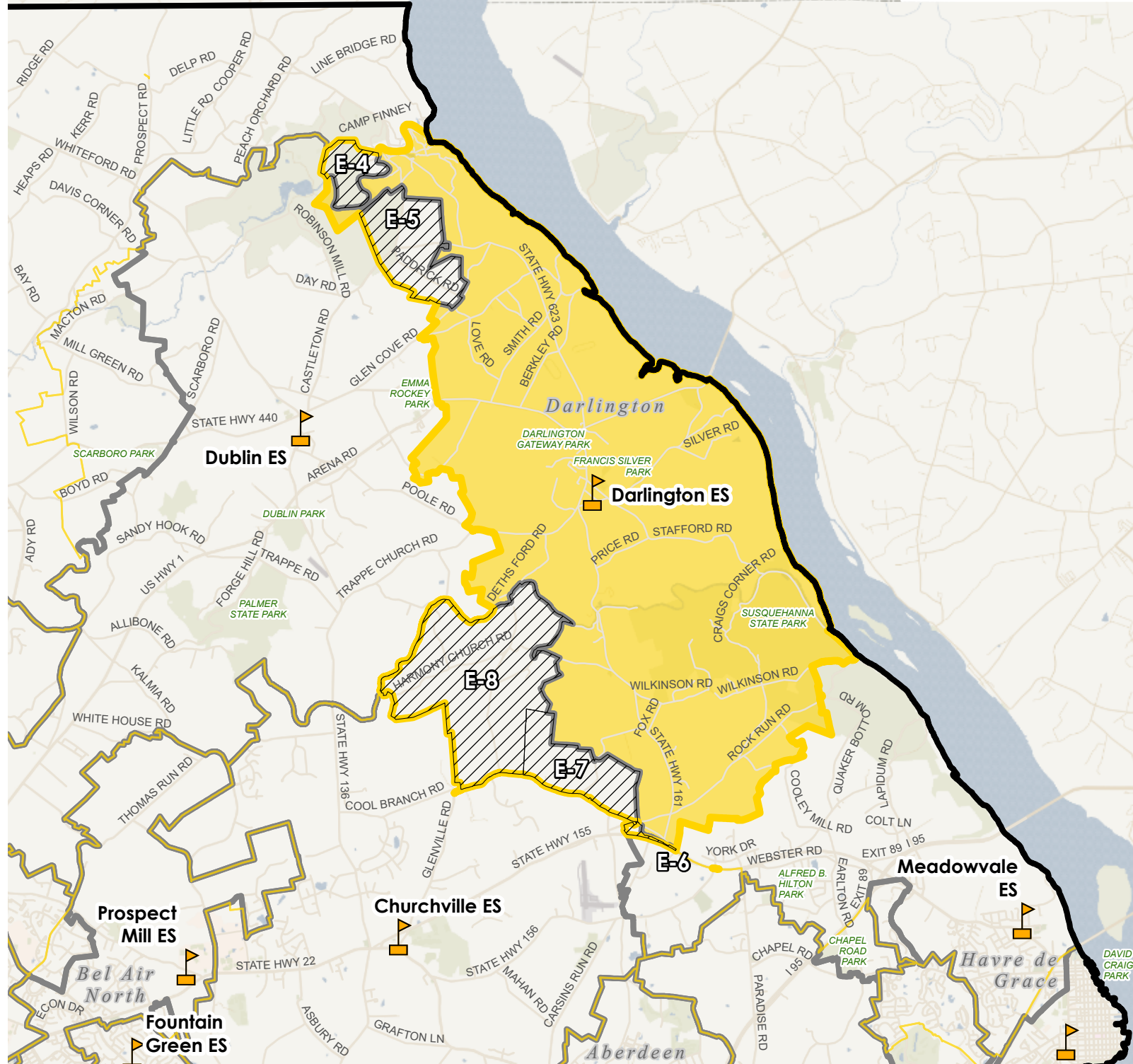
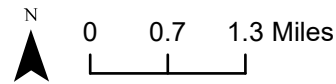


# CEF 2 Elementary School Scenario - Darlington ES

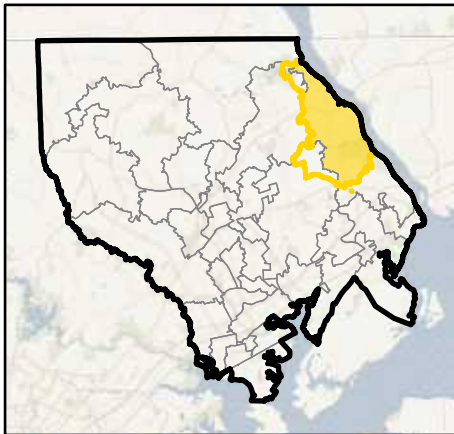
-  Elementary School
  -  District Boundary
  -  Advisory Team Working Elementary School Boundary for Darlington ES
  -  Potential Change Area
- Current Configuration - Elementary Schools**
-  Darlington ES Current Attendance Area
  -  Elementary School Attendance Area
  -  Boundary Outline - Current Attendance Area

**Potential Change Areas:**




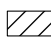



- E-4: From Dublin ES to Darlington ES
- E-5: From Dublin ES to Darlington ES
- E-6: From Meadowvale ES to Darlington ES
- E-7: From Churchville ES to Darlington ES
- E-8: From Churchville ES to Darlington ES



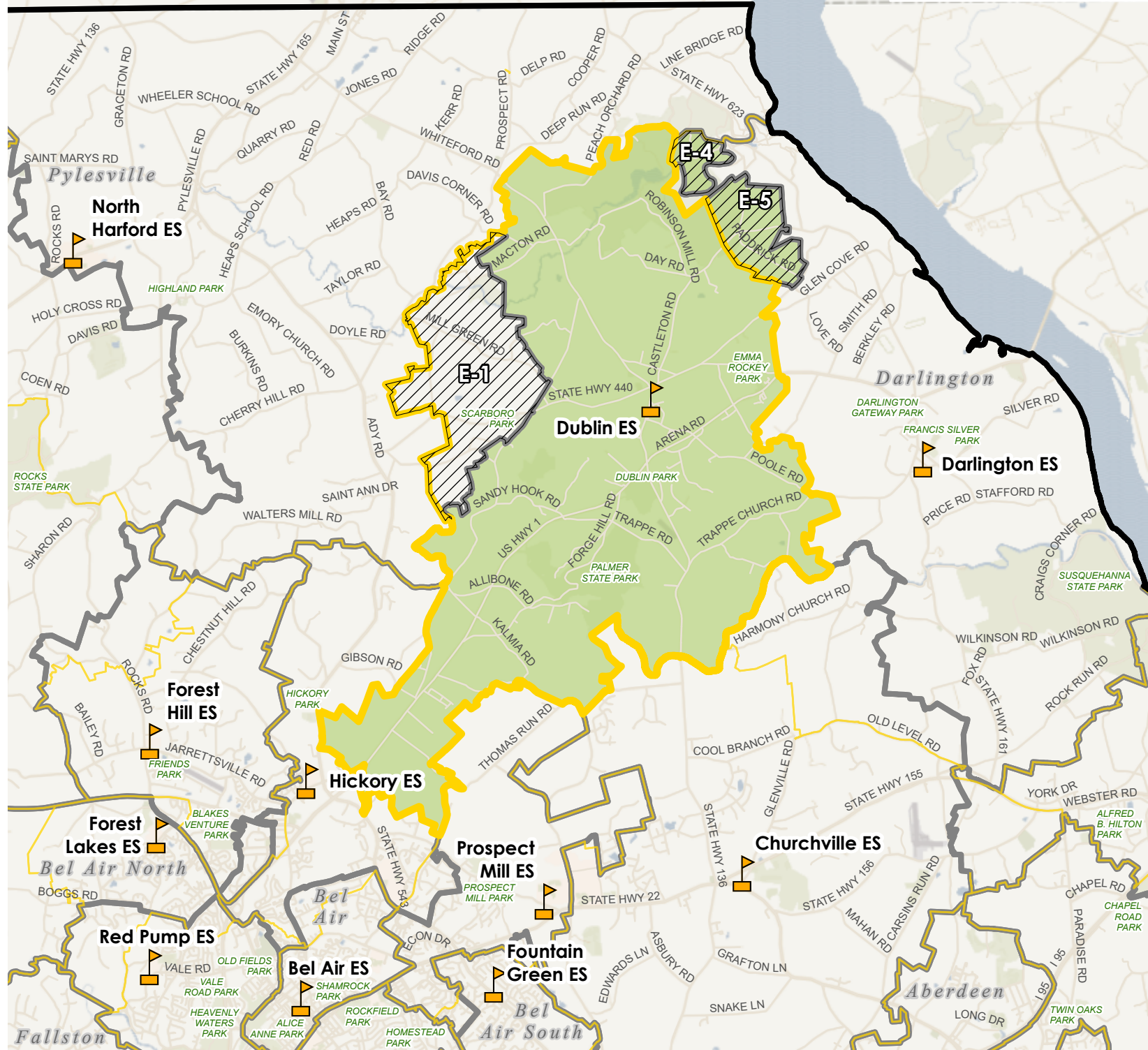
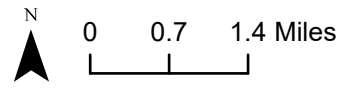
**Overview Map**



# CEF 2 Elementary School Scenario - Dublin ES

-  Elementary School
-  District Boundary
-  Advisory Team Working Elementary School Boundary for Dublin ES
-  Potential Change Area
- Current Configuration - Elementary Schools**
-  Dublin ES Current Attendance Area
-  Elementary School Attendance Area
-  Boundary Outline - Current Attendance Area

Potential Change Areas:  
 E-4: From Dublin ES to Darlington ES  
 E-5: From Dublin ES to Darlington ES  
 E-1: From North Harford ES to Dublin ES



## Overview Map

