

Welcome!



**Balancing Enrollment Process
Advisory Team Meeting 6
May 12, 2021**



Intentions

1. Participants re-engage in the process with a quick session preview and review of AT5 exit survey outputs.
2. Participants discuss refinements and give inputs to elementary and secondary options, making them CEF2-ready.
3. Participants preview CEF2 intentions and format.
4. Participants leave with clear next steps.

Agenda

- Opening, Session Preview (10 min)
- Elementary Options - Refinement (20 min)
- Elementary-to-Middle Feeders - Workshop (95 min)
- CEF2 Preview & Wrap Up (25 min)



Advisory Team Session Norms & Mindsets



Norms & Mindsets:	Looks like...
1. Keep the needs of students at the center of this work.	<ul style="list-style-type: none">● Asking what's best for children● Helping refocus conversations around students and their future
2. Be fully present.	<ul style="list-style-type: none">● Monotasking with your focus on this session● Minimizing technology distractions● Engaging by computer with video for full participation
3. Respect one another, our time frames, our shared airspace, and our process.	<ul style="list-style-type: none">● Monitoring your own talk time● Speaking your truth and speaking for yourself● Being succinct and listening to learn and understand● Assuming colleagues' positive intent and equal effort
4. Stay in a solution mindset and remember that we are all in this together.	<ul style="list-style-type: none">● Engaging with generosity of spirit● Asking "what if" and considering new ways of doing things
5. Remember! This is a PROCESS.	<ul style="list-style-type: none">● Being with the discomfort of not having all the answers.● Sometimes there will be more questions than answers

Virtual Norms...

Own your virtual engagement:

1. Turn your video **on** and mute yourself when you're not speaking.
2. Make sure your name is visible in your video box.
3. Use the chat for technical difficulties and accessing links.
4. Don't be afraid to say "Sorry, I missed that..." or "Could someone clarify what we're doing..."
5. Use the chat to announce if you need to step away from the meeting.
6. Allow for humanity (family, roommates, furry co-workers)

Timeline of Key Meetings & Events

January	February	March	April	May	June
Executive Leadership Team Meeting 1 WHAT: Prepare for A-Team meetings	Executive Leadership Team Meeting 2 WHAT: Debrief A-Team meeting; Spring board proposal	Advisory Team Meeting 3 (3/10/21) WHAT: Options redevelopment, prep for CIF1	Executive Leadership Team Meeting 5 WHAT: CIF1 review, options implications	Executive Leadership Team Meeting 6 WHAT: Process check, options check, prep for CIF2	Community Input Forum 2 (6/2/21) WHAT: Final options review & feedback
Process Orientation WHAT: Asynchronous process overview	Advisory Team Meeting 2 (2/10/21) WHAT: Springboard proposal, options development	Executive Leadership Team Meeting 4 WHAT: Prep for CIF1, options implications	Community Input Forum 1 (4/14/21) WHAT: 1 st round options presentation & input	Advisory Team Meeting 6 (5/12/21) WHAT: Options redevelopment, prep for CIF2	Advisory Team Meeting 7 (6/16/21) WHAT: Present final options to superintendent
Advisory Team Meeting 1 (1/13/21) WHAT: Meet & greet, process overview, dat 101	Executive Leadership Team Meeting 3 WHAT: Debrief AT2, continue opts devt	Advisory Team Meeting 4 (3/24/21) WHAT: Options redevelopment, prep for CIF 1			
	 Advisory Team Meeting 3 (2/24/21) WHAT: Options development 	Advisory Team Meeting 4b (3/31/21) WHAT: South Region options redevelopment	Advisory Team Meeting 5 (4/28/21) WHAT: Consider CIF1 inputs, prep for CIF2		

The Process (How?): Guiding Principles

When considering school reconfigurations and boundary revisions, BEP process participants shall prioritize, to the extent possible, the following **guiding principles**.


These are the lenses through which the advisory team members will evaluate options.

1. Implement a **transparent and inclusive boundary review process** that fosters the widespread and ongoing engagement of Harford County's families and community members.
2. Take a **district-wide perspective** by considering the full scope of individual school capacities and student population projections to **balance enrollment**.
3. Operate in the best interest of students by prioritizing **equitable access to safe, high-quality educational environments** for all.
4. Consider the **accessibility of regional programs and signature academic programs & the long-term needs of special populations** (e.g., students with special needs, early learners, etc.) with each decision.
5. Maintain neighborhood schools that **optimize proximity to home, prioritize safe, walkable passages** to and from school, and take into account the boundaries of **existing & planned community developments**.
6. Consider **transportation impacts** and work towards limiting the amount of time required on a bus to 45 minutes or less each way.
7. Optimize **operational efficiency** and ensure the **sustainable allocation of district resources** with each decision.

Advisory Team Meeting #5 - Recap



Intentions

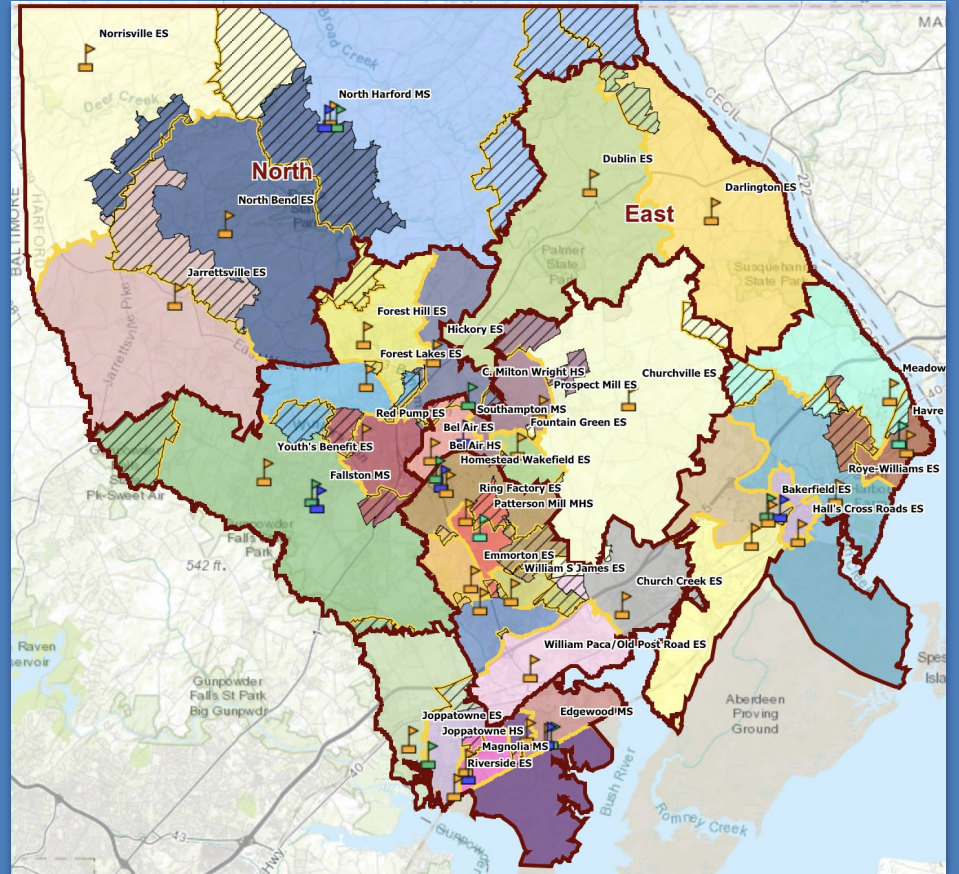
1.  Participants re-engage in the process with a quick session preview and review of AT5 exit survey outputs.
2. Participants discuss refinements and give inputs to elementary and secondary options, making them CEF2-ready.
3. Participants preview CEF2 intentions and format.
4. Participants leave with clear next steps.

Agenda

- Opening, Session Preview (10 min)
- Elementary Options - Refinement (20 min)
- Elementary-to-Middle Feeders - Workshop (95 min)
- CEF2 Preview & Wrap Up (25 min)



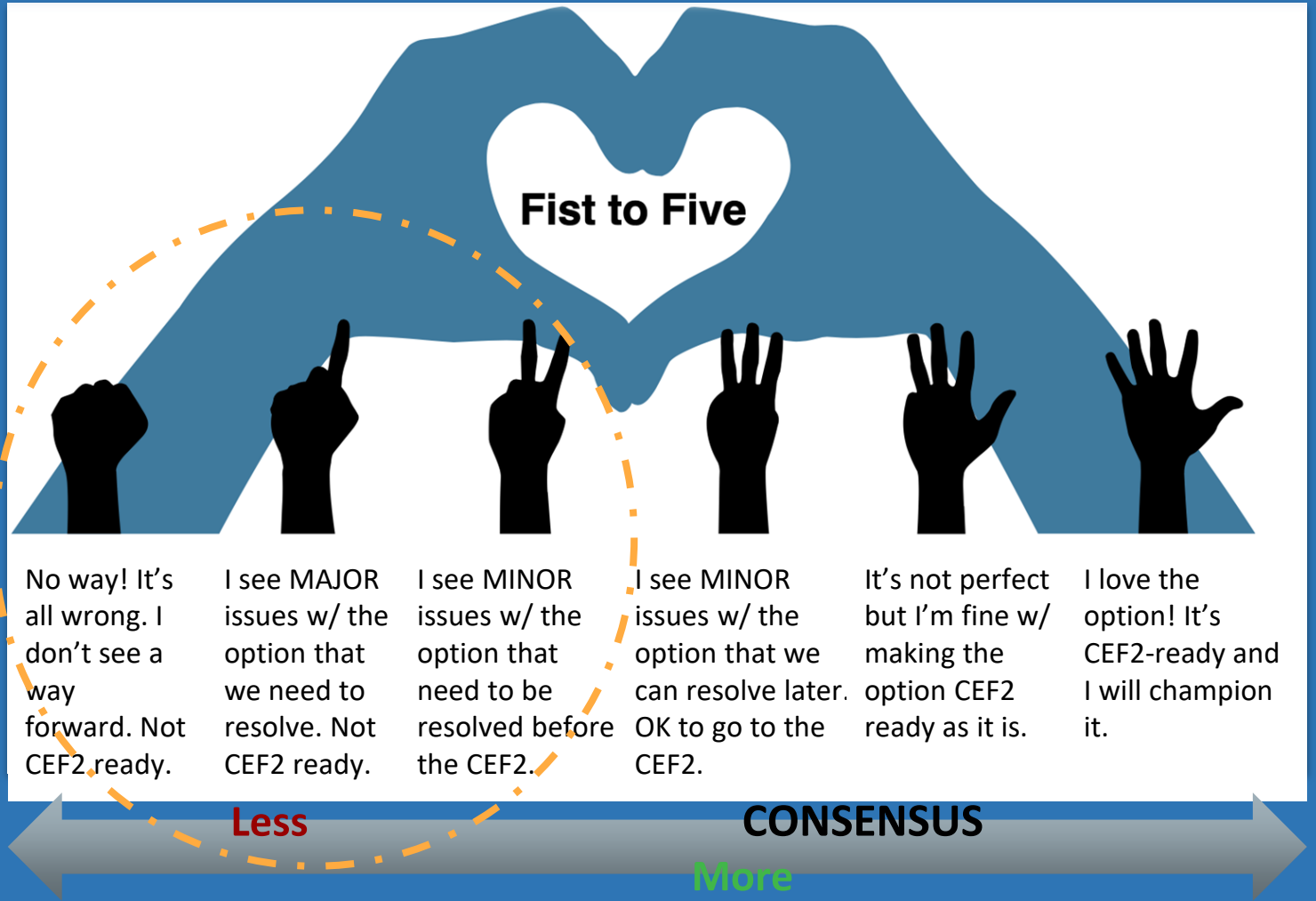
Balancing Enrollment: Getting Back to Work - ES Tweaks & Updates



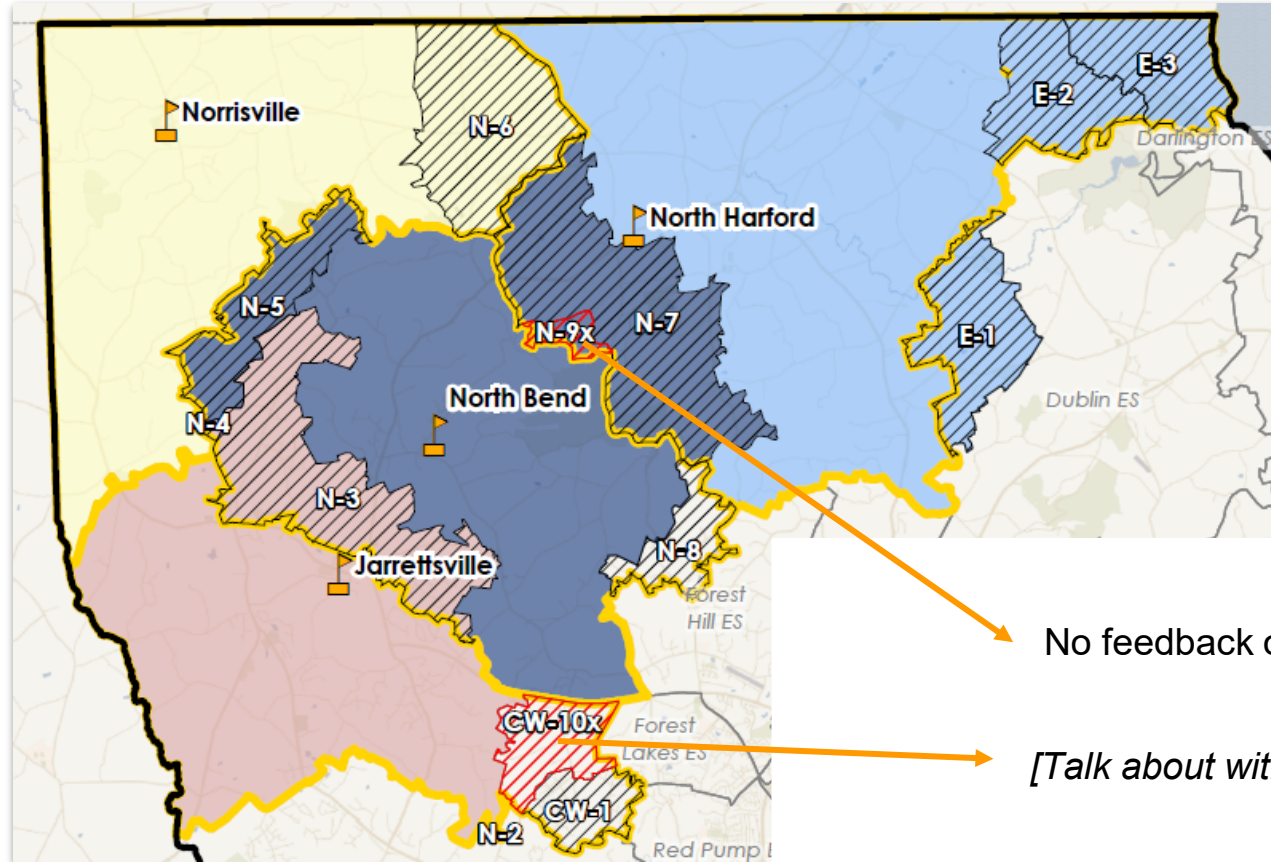
Before we continue...

- Today we will be focusing on Elementary to Middle School feeders
- None of the HCPS High Schools are over capacity, so while we will confirm any Middle School changes do not impact the High Schools, during the session we will be looking at balancing the Middle School enrollment
- Middle Schools and High Schools will continue to have identical boundaries in this process

Question:
Is the ES
option
CEF2
ready?



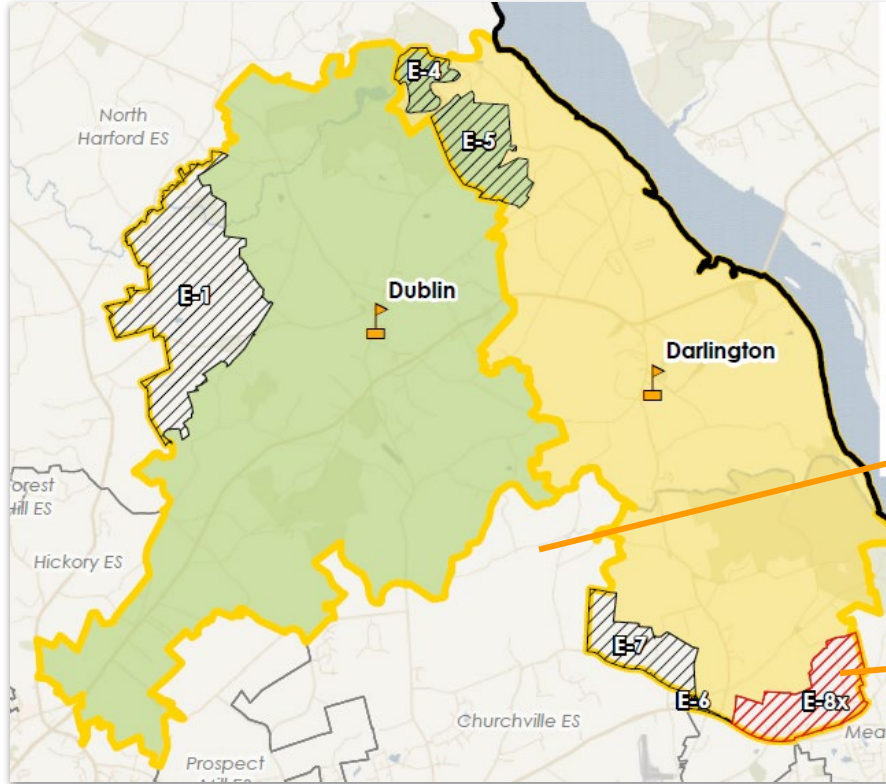
Affirming Elementary School Changes



No feedback on this update

[Talk about with Center West]

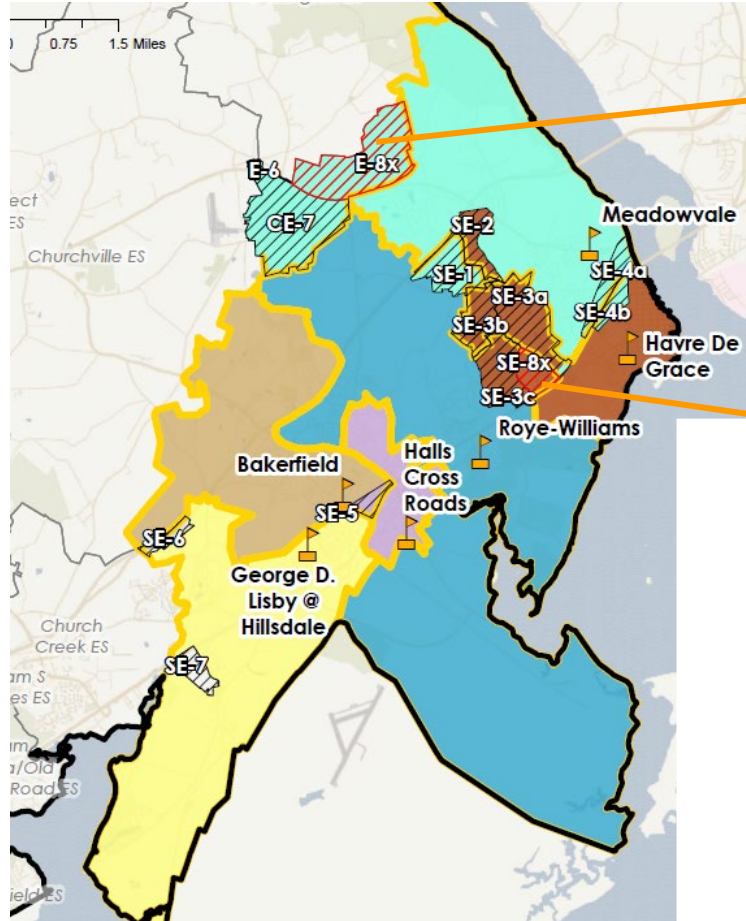
Affirming Elementary School Changes



This area is closer to Darlington, could stay at same MS

Consider neighborhood part of Meadowdale, concerned about smaller road to get to Darlington

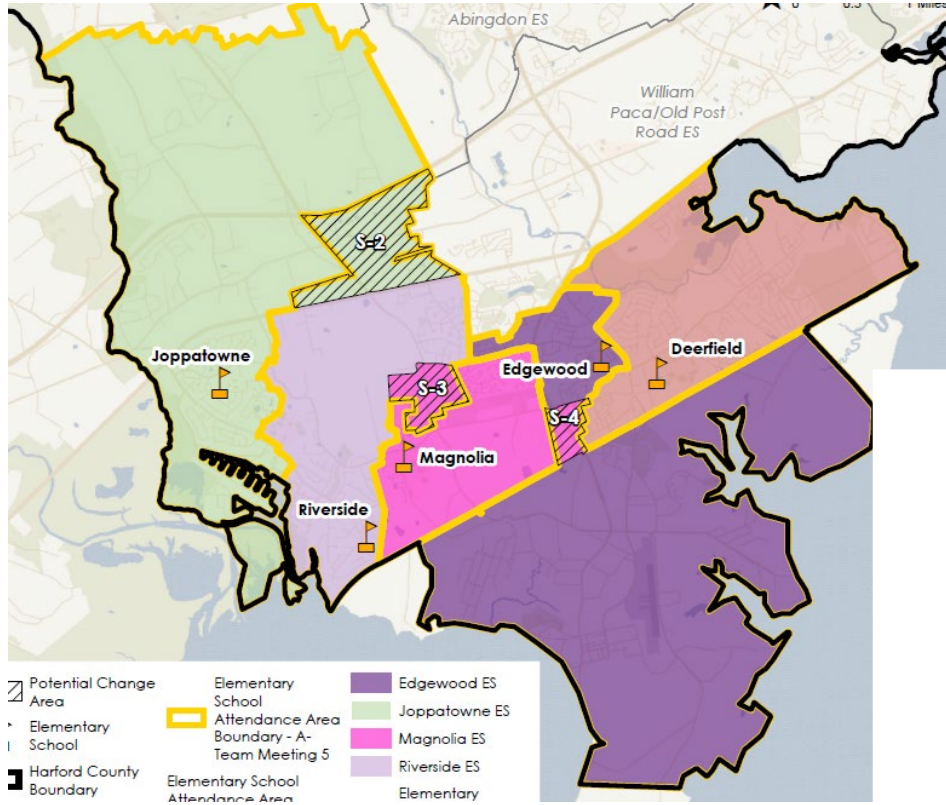
Affirming Elementary School Changes



Discussed in East Region

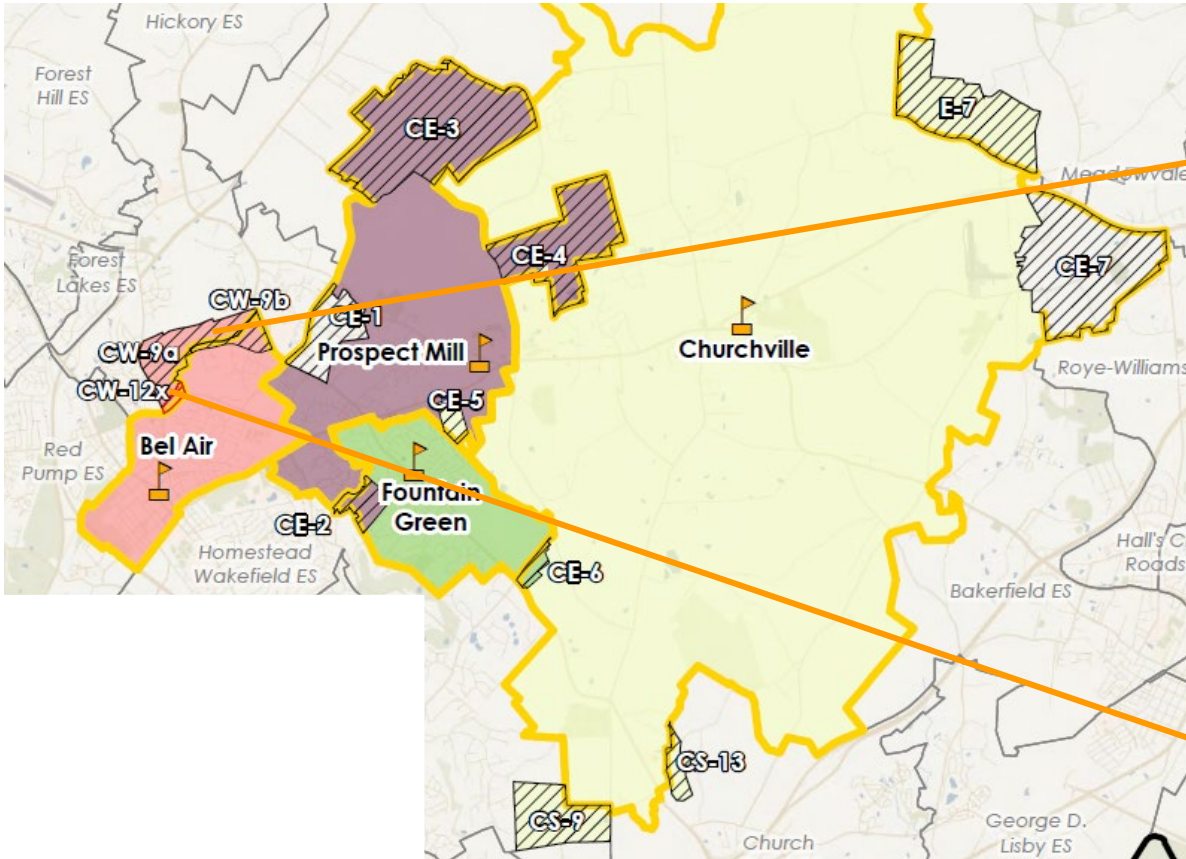
Greenway Farms area to Roye-Williams

Affirming Elementary School Changes



No feedback yet

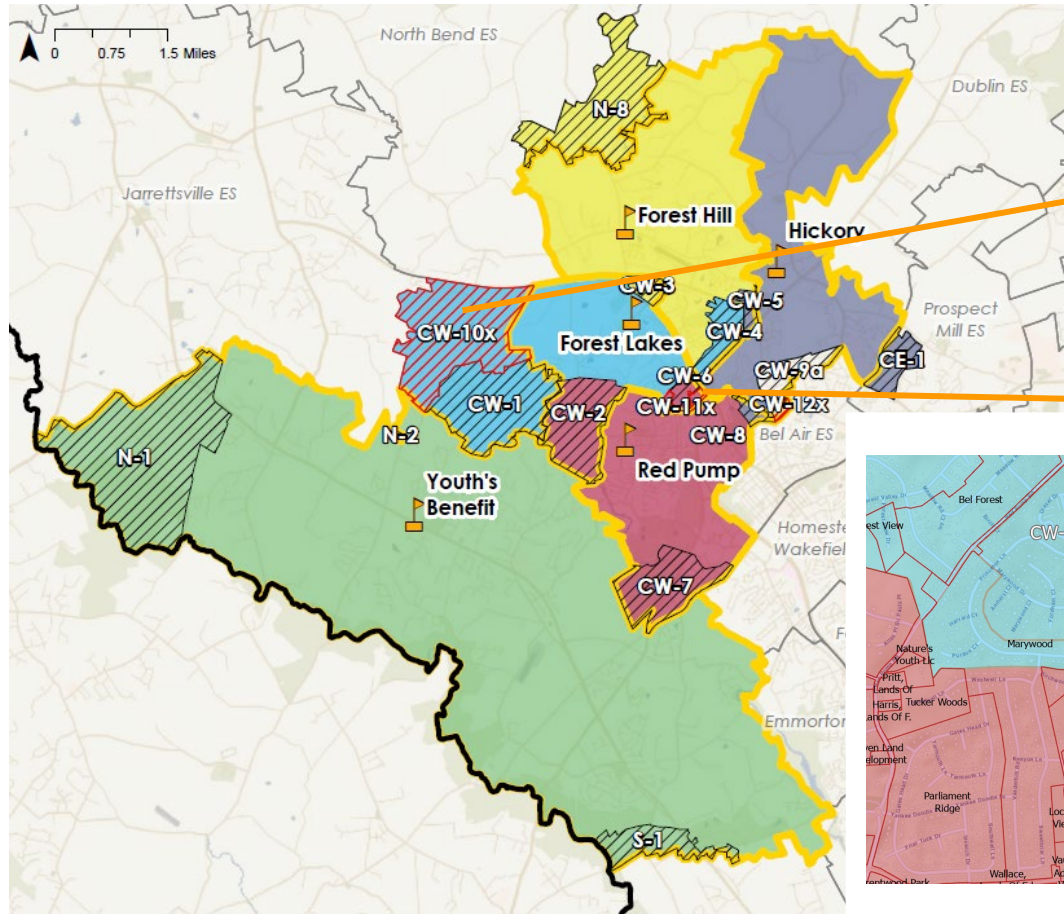
Affirming Elementary School Changes



CW-9a: Lees Woods and Long Meadow feedback to stay with CW-9b Hampton Ridge at Bel Air. Hickory is at 97.4% and Bel Air is at 97.1% in 2026. This would put Bel Air at 101%.

CW-12x: No feedback yet

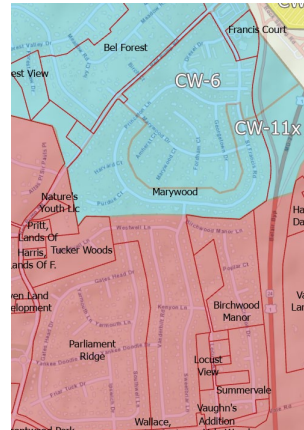
Affirming Elementary School Changes



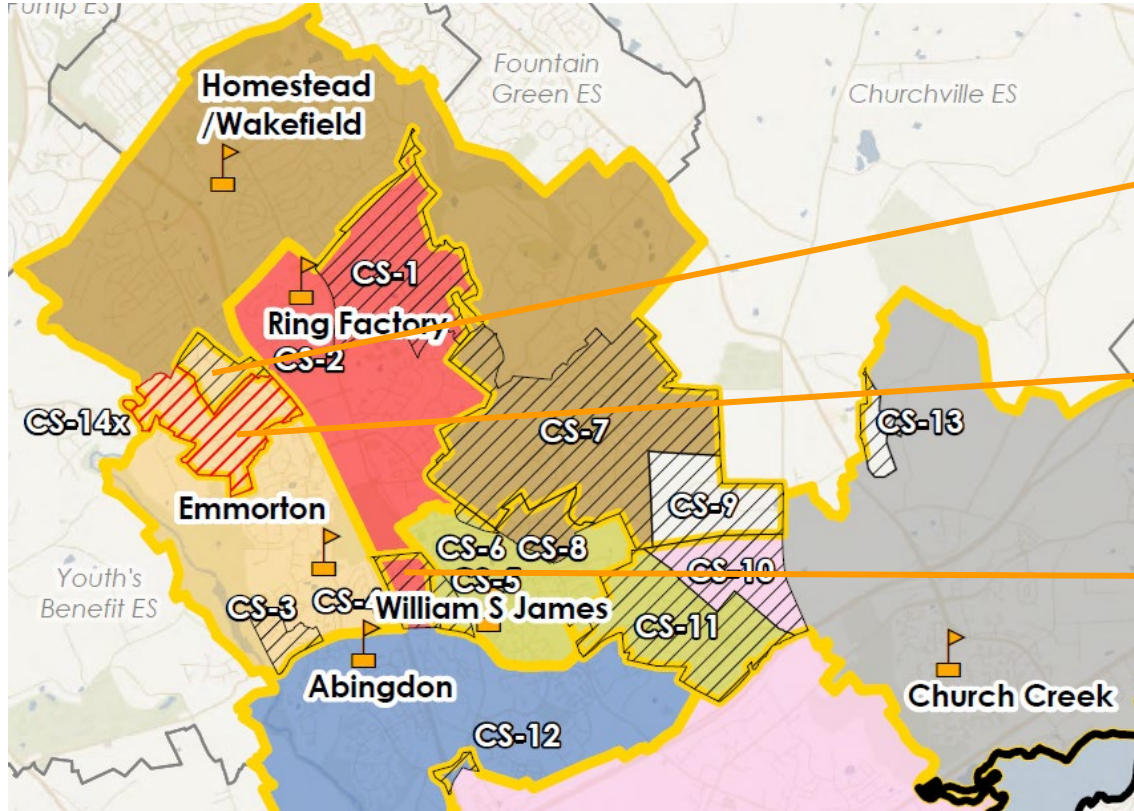
CW-1 and CW-10x:
Concerned about long
commute times from
this area to Jarrettsville.

CW-6 and CW-11x: Emails about
Marywood wanting to stay with
Marywood 2 and at Red Pump.

Alternative Discussion: Send all
of Marywood 1 & 2 to Forest
Lakes, send CW-2 back to Red
Pump



Affirming Elementary School Changes





CS-2: Send back to HWES with top part of CS-14x? More contiguous to have the top area all going to HWES.

CS-14x: Split and send previous "15x" to Ring Factory?

CS-4: Feedback to stay at Ring Factory. If stays at Ring Factory then there is no change and the school is projected to be at 100% in 2026. In this scenario RFES is at 92% and Abingdon is at 86%.

Intentions

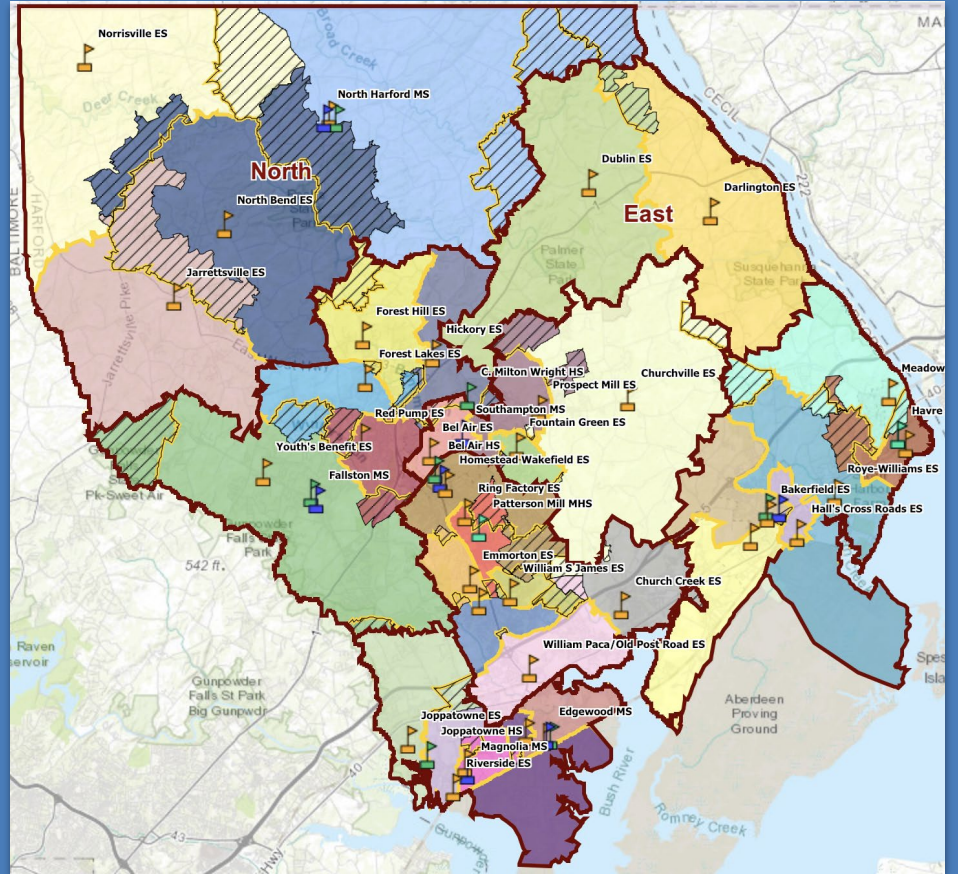
1.  Participants re-engage in the process with a quick session preview and review of AT5 exit survey outputs.
2.  Participants discuss refinements and give inputs to elementary and secondary options, making them CEF2-ready.
3. Participants preview CEF2 intentions and format.
4. Participants leave with clear next steps.

Agenda

- Opening, Session Preview (10 min)
- Elementary Options - Refinement (20 min)
- Elementary-to-Middle Feeders - Workshop (95 min)
- CEF2 Preview & Wrap Up (25 min)



Balancing Enrollment: Elementary to Middle School Feeders



Question:
Is the MS
option
CEF2
ready?



Fist to Five

No way! It's all wrong. I don't see a way forward. Not CEF2 ready.

I see MAJOR issues w/ the option that we need to resolve. Not CEF2 ready.

I see MINOR issues w/ the option that need to be resolved before the CEF2.

I see MINOR issues w/ the option that we can resolve later. OK to go to the CEF2.

It's not perfect but I'm fine w/ making the option CEF2 ready as it is.

I love the option! It's CEF2-ready and I will champion it.

Less

CONSENSUS

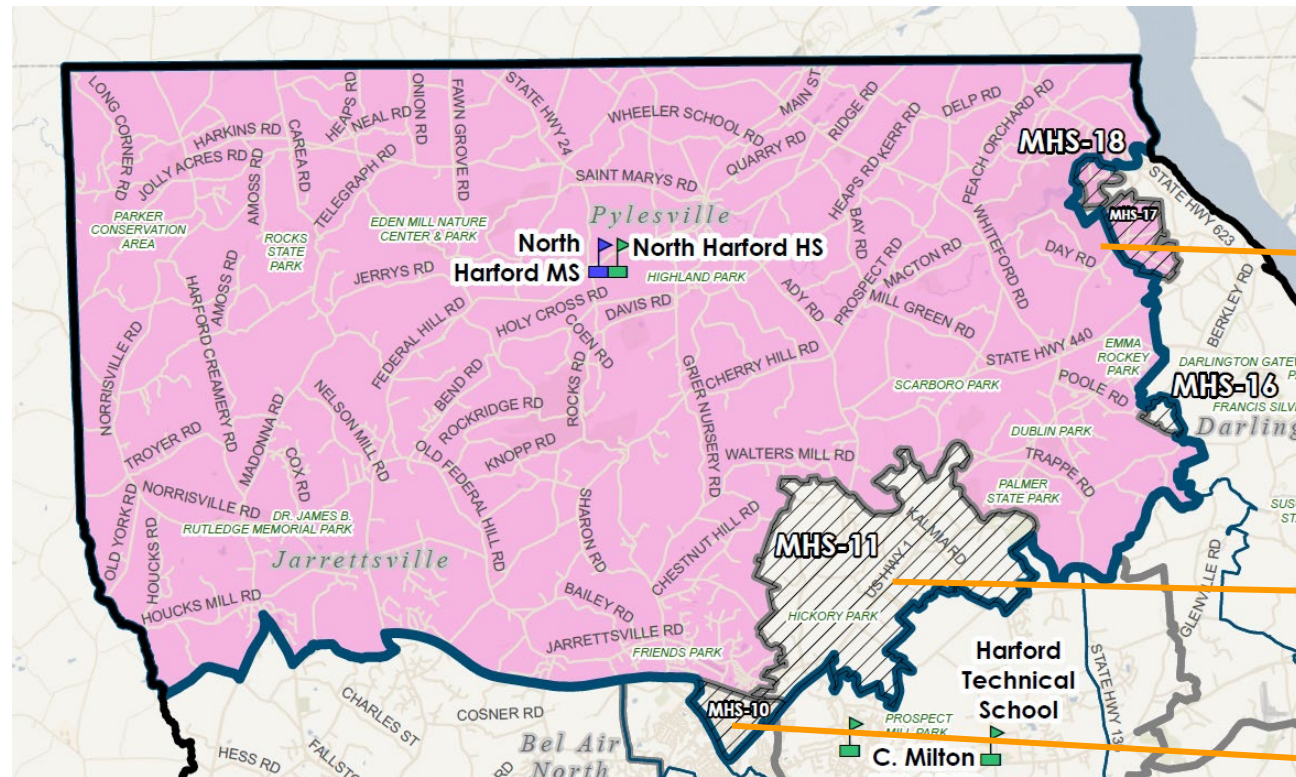
More

Affirming Middle School Options

School	Functional Capacity	Existing		E-Team Meeting 5-6-21	
		2019 Utilization	2026 Utilization	2019 Utilization	2026 Utilization
Aberdeen MS	1615	74.5%	77.6%	79.5%	82.2%
Bel Air MS	1233	116.3%	121.8%	93.0%	96.1%
Edgewood MS	1275	90.7%	93.2%	90.7%	92.4%
Fallston MS	1020	91.6%	95.5%	95.9%	101.3%
Havre De Grace MS	723	83.1%	84.0%	80.6%	81.9%
Magnolia MS	978	84.7%	88.2%	88.4%	92.9%
North Harford MS	1190	77.7%	75.6%	94.0%	92.8%
Patterson Mill MS	701	107.6%	111.1%	89.7%	91.9%
Southampton MS	1381	91.2%	92.2%	96.5%	98.2%

Affirming Middle School Options

North Harford MS/North Harford HS



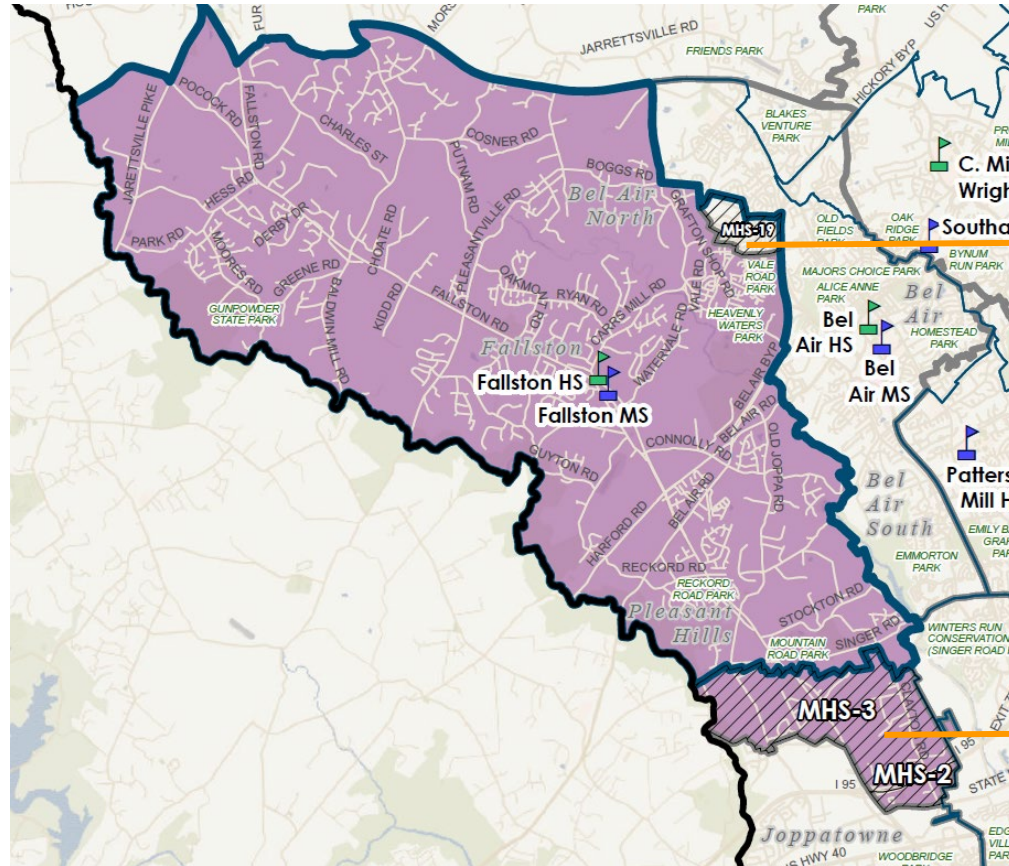
Boundary changes around Dublin/Darlington

Send all Dublin ES to North Harford

Send all Forest Hills ES to North Harford

Affirming Middle School Options

Fallston MS/Fallston HS



[Bel Air discussion]

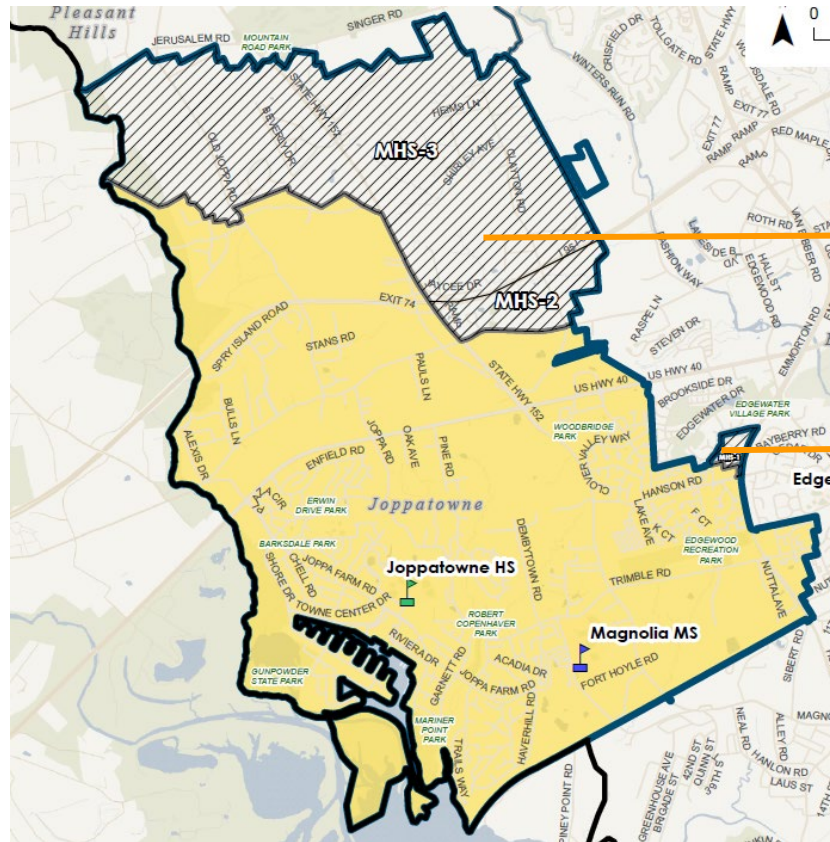
Send more of Red Pump
to the west of Route 1
from Bel Air to Fallston

This would send
Marywood 1 to a different
MS/HS

Send all of Joppatowne
and Riverside ES to
Magnolia MS

Affirming Middle School Options

Magnolia MS/Joppatowne HS

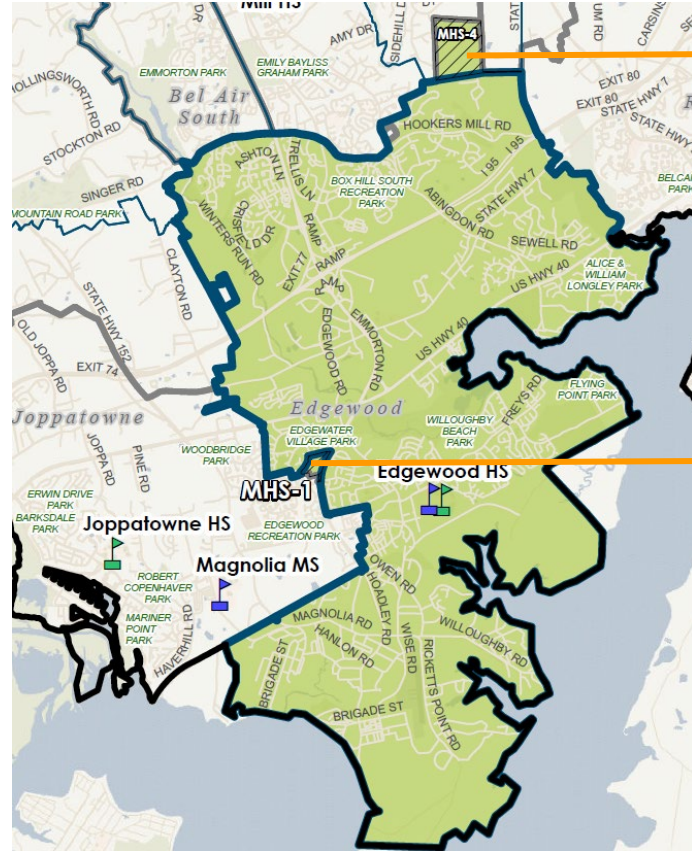


Send all of Joppatowne and Riverside ES to Magnolia MS

Send area (Ashby Place) to the west of 24 to Magnolia with the rest of their neighborhood

Affirming Middle School Options

Edgewood MS/Edgewood HS

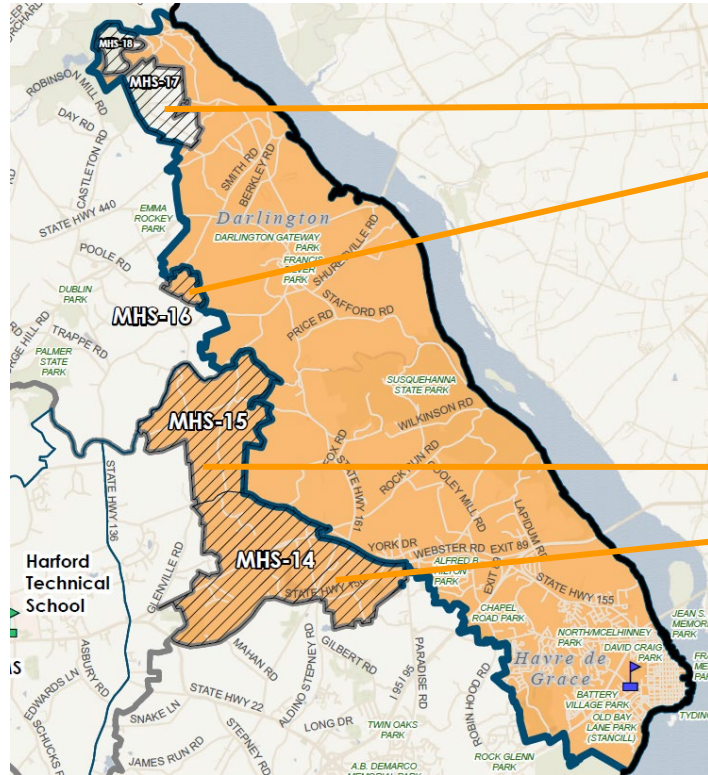


Area between Cedarday and 12 Stones Rd, keep with these areas

Send area to the west of 24 (Ashby Place) to Magnolia with the rest of their neighborhood

Affirming Middle School Options

Havre de Grace MS/Havre de Grace HS

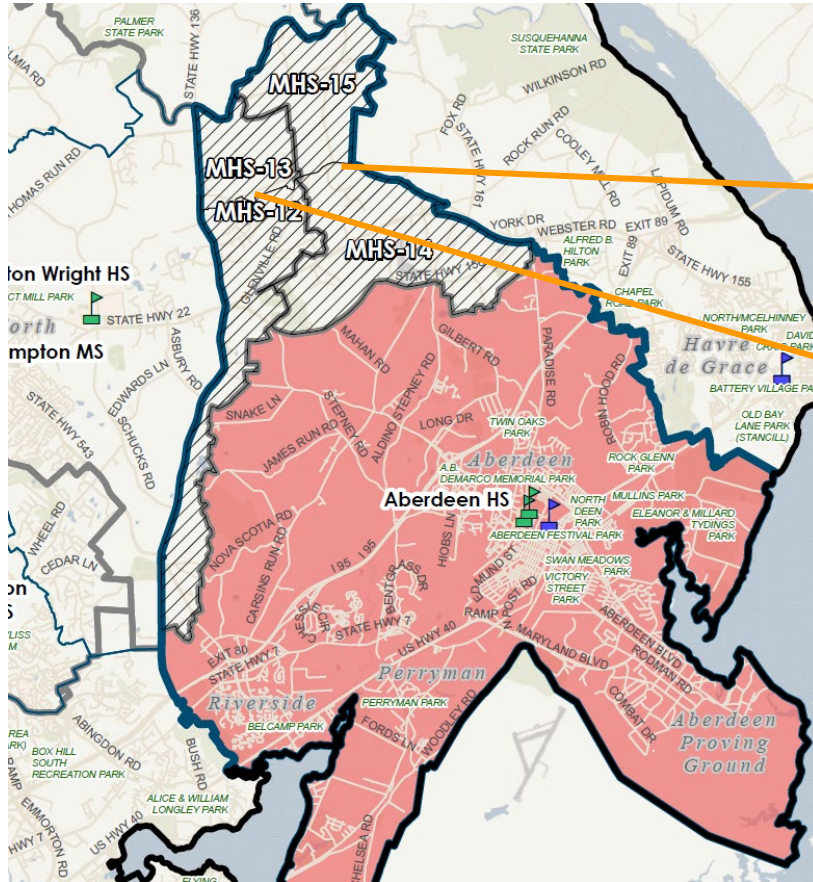


Adjustments based on
Dublin/Darlington change
areas

Send from Churchville to
Aberdeen instead of
Havre de Grace

Affirming Middle School Options

Aberdeen MS/Aberdeen HS



Send from Churchville to
Aberdeen instead of
Havre de Grace

Send from Churchville to
Aberdeen instead of
Southampton

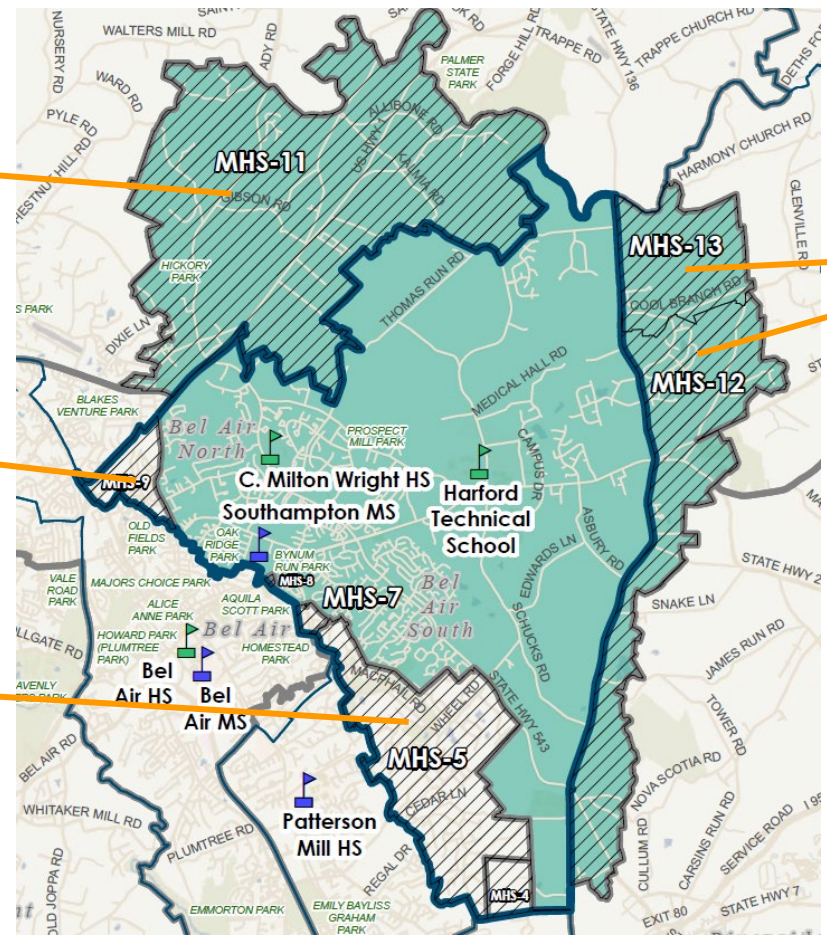
Affirming Middle School Options

Southampton MS/C. Milton Wright HS

North Hickory and
Dublin to NHMS

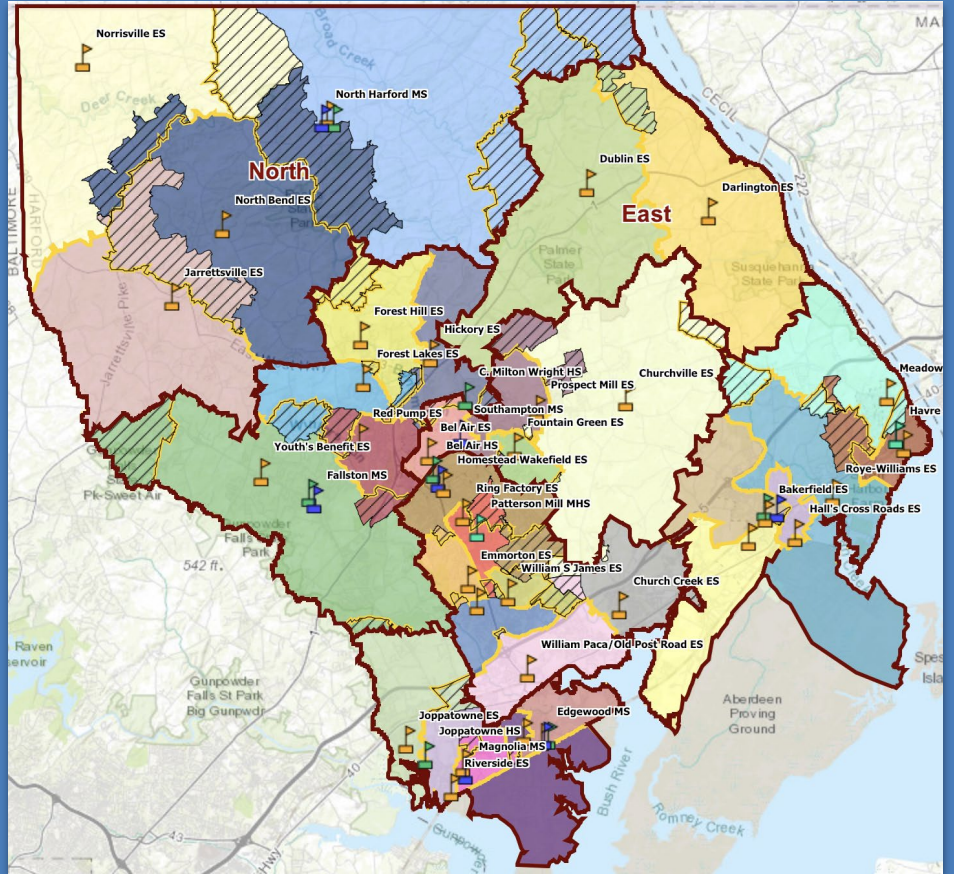
Send this part of
Hickory with the rest of
South Hickory

*[Patterson Mill
discussion]*



Send to Aberdeen

Time to workshop our
more challenging ES-
>MS areas.



Whole Group Workshopping - Preview



1: FLO Presentation Preview of Area (~5 min)

2: Silent & Solo (~5 min)

1. What would you like to try to solve for the challenge presented?
2. Are there any other issues in this area aside from what FLO has presented that need to be kept top of mind?

3: Discussion in Full Group (~18 min)

- Starting with answers to above questions

4: Adjustments + Fist-to-Five (~2 min)

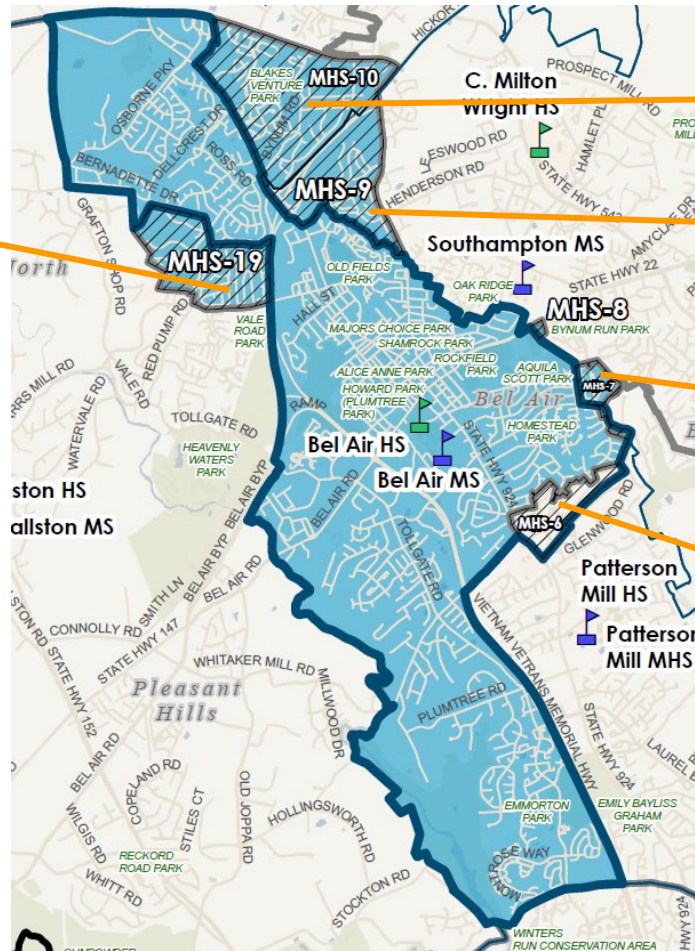
- Fist-to-five poll of CEF2 readiness



Middle School Options Discussion

Bel Air MS/Bel Air HS

This move would split Marywood for ES and for MS/HS



Send all Forest Hills ES to North Harford

Want to stay with the rest of Hickory at Southhampton

Greenbrier Hills joins other HWES to go to Southhampton

Keeps this part of Homestead Wakefield all at Bel Air together

Middle School Options Discussion

Patterson Mill Middle High School

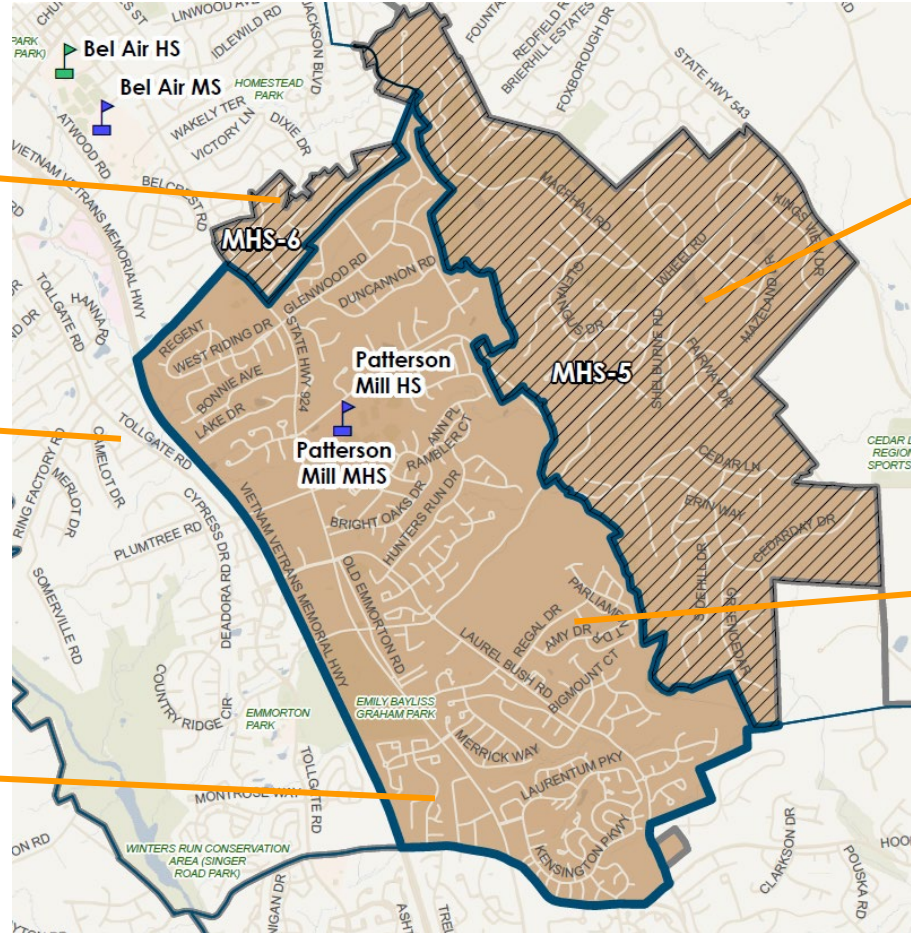
Keeps this part of Homestead Wakefield all at Bel Air together



CS-2 (Camelot) is in Bel Air in this scenario - move to Patterson Mill with the rest of RFES?



Keeps CS-4 at Patterson Mill MS, splits from the rest of Abingdon ES



This area from HWES to Southampton



One part of CS-7 (Broadview area) goes to Patterson Mill from HWES



Question:
Is the MS
option
CEF2
ready?



No way! It's all wrong. I don't see a way forward. Not CEF2 ready.

I see MAJOR issues w/ the option that we need to resolve. Not CEF2 ready.

I see MINOR issues w/ the option that need to be resolved before the CEF2.

I see MINOR issues w/ the option that we can resolve later. OK to go to the CEF2.

It's not perfect but I'm fine w/ making the option CEF2 ready as it is.

I love the option! It's CEF2-ready and I will champion it.

Less

CONSENSUS

More

Advisory Team Session #6 Intentions & Agenda



Intentions

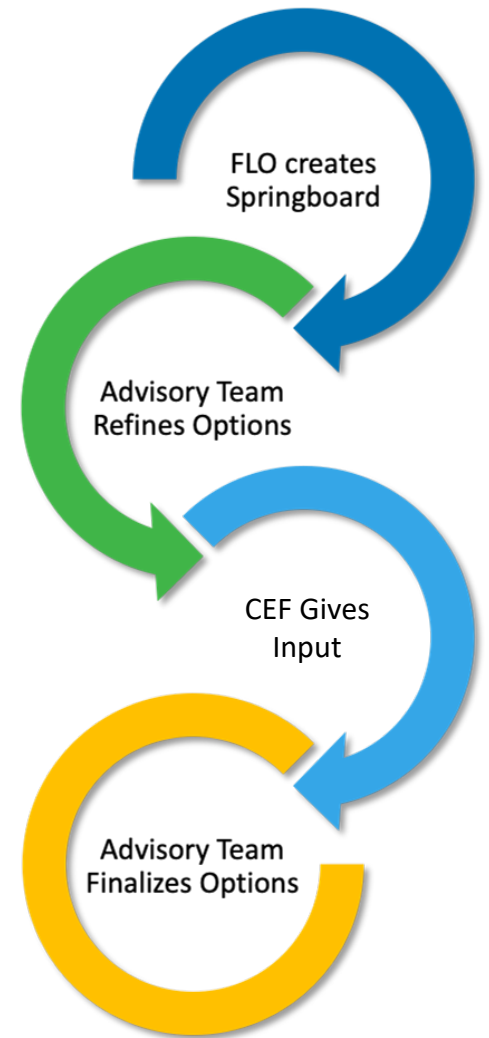
1. Participants re-engage in the process with a quick session preview and review of AT5 exit survey outputs.
2. Participants discuss refinements and give inputs to elementary and secondary options, making them CEF2-ready.
3. Participants preview CEF2 intentions and format.
4. Participants leave with clear next steps.

Agenda

- Opening, Session Preview (10 min)
- Elementary Options - Refinement (20 min)
- Elementary-to-Middle Feeders - Workshop (95 min)
- CEF2 Preview & Wrap Up (25 min)



CEF #2 Preview



CEF2 Preview

Goals

1. **Share information** with and answer questions from community stakeholders about the BEP
2. Present elementary and secondary preferred options-to-date from advisory team work and CEF1 to community and **collect community input** for integration into options refinement

Logistics

- ★ Open to the public -- registration not required
- ★ 2 virtual 2.5-hour engagements via Teams - Part 1 - June 2, Part 2 - June 3
- ★ Invitation, maps, materials, question solicitation distributed through Connect-5 communications blast starting week of May 19
- ★ Event recording, materials, input survey available for at least 1 week after

Before CEF Sessions

- Community invited to submit questions in advance
- ELT/FLO organizes inquiries & prepares responses

CEF2 Part 1

- 2.5 hours live
- ELT/FLO fields general (non region-specific) Qs
- FLO presents 4 feeder systems options
- ELT/FLO field Qs related to first 4 feeders
- Community input survey

CEF2 Part 2

- 2.5 hours live
- FLO presents remaining 5 feeder systems options
- ELT/FLO field Qs related to remaining 5 feeders
- Community input survey

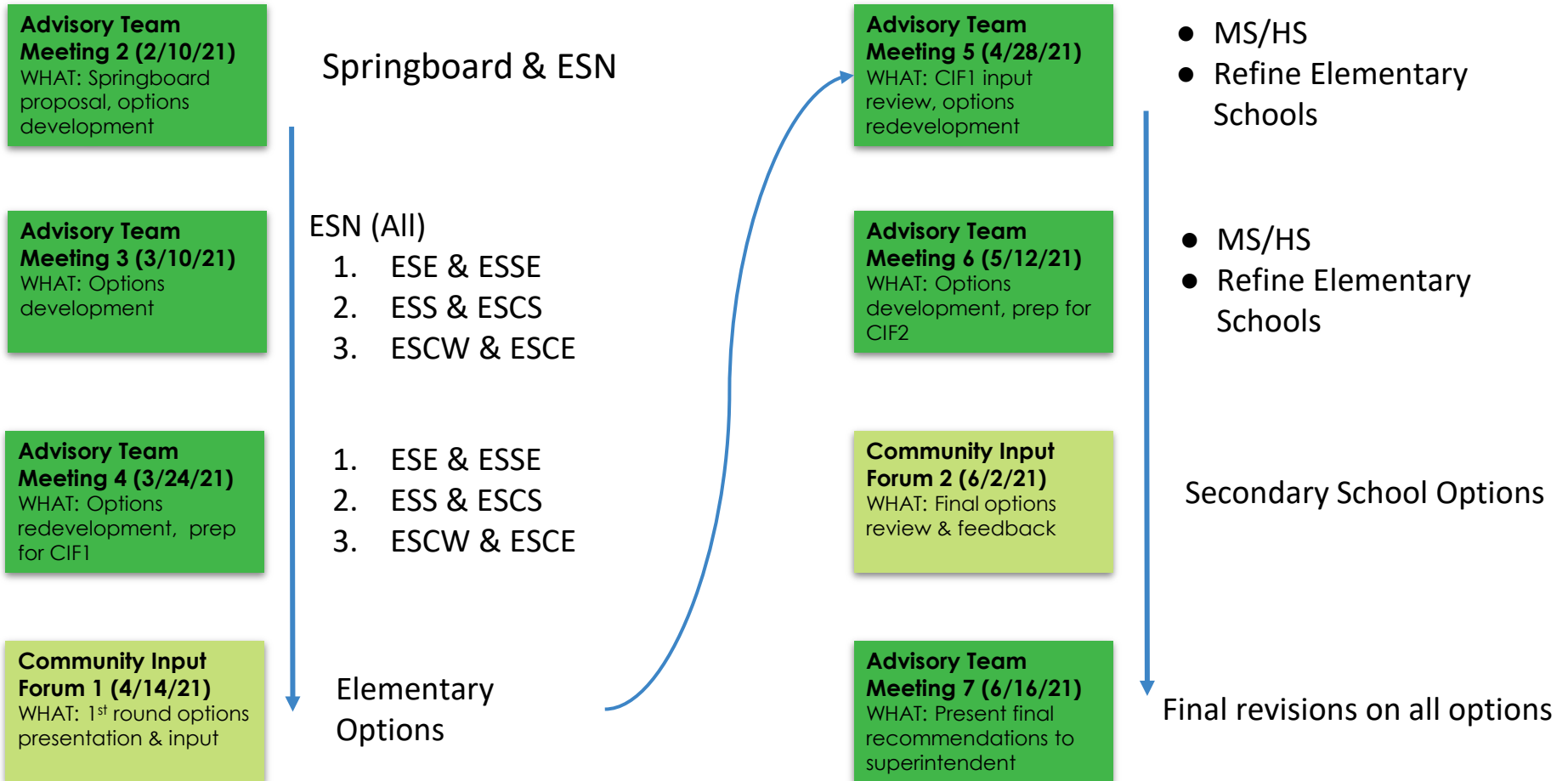
After CEF Sessions

- Video of both sessions plus community input survey remain available for at least one week
- Bloom/FLO analysis of survey data
- Advisory Team 7 (6/16) reconvenes to consider final recommendations

Timeline of Key Meetings & Events

January	February	March	April	May	June
Executive Leadership Team Meeting 1 WHAT: Prepare for A-Team meetings	Executive Leadership Team Meeting 2 WHAT: Debrief A-Team meeting; Spring board proposal	Advisory Team Meeting 3 (3/10/21) WHAT: Options redevelopment, prep for CIF1	Executive Leadership Team Meeting 5 WHAT: CIF1 review, options implications	Executive Leadership Team Meeting 6 WHAT: Process check, options check, prep for CIF2	Community Input Forum 2 (6/2/21) WHAT: Final options review & feedback
Process Orientation WHAT: Asynchronous process overview	Advisory Team Meeting 2 (2/10/21) WHAT: Springboard proposal, options development	Executive Leadership Team Meeting 4 WHAT: Prep for CIF1, options implications	Community Input Forum 1 (4/14/21) WHAT: 1 st round options presentation & input	Advisory Team Meeting 6 (5/12/21) WHAT: Options redevelopment, prep for CIF2	Advisory Team Meeting 7 (6/16/21) WHAT: Present final options to superintendent
Advisory Team Meeting 1 (1/13/21) WHAT: Meet & greet, process overview, dat 101	Executive Leadership Team Meeting 3 WHAT: Debrief AT2, continue opts devt	Advisory Team Meeting 4 (3/24/21) WHAT: Options redevelopment, prep for CIF 1			
	 Advisory Team Meeting 3 (2/24/21) WHAT: Options development 	Advisory Team Meeting 4b (3/31/21) WHAT: South Region options redevelopment	Advisory Team Meeting 5 (4/28/21) WHAT: Consider CIF1 inputs, prep for CIF2		

Advisory Team Meetings - Boundary Review



Advisory Team Meeting 7 Preview

Meeting Intentions & Outcomes

1. Consider CEF2 inputs
2. Final revisions on all options
3. Goal: Superintendent-ready recommendations

Facilitation Details

- Wednesday, June 16th, 5-7:30PM
- Virtual via Zoom
- Expecting ~40 participants + FLO/ Bloom staff
- Continuation of breakout session engagement and on-the-fly modeling
- During and post-session opportunities for reaction and feedback

**Don't forget
the survey!**

Thank You!

**See you again on June 2 & 3 at the
CEF.**

