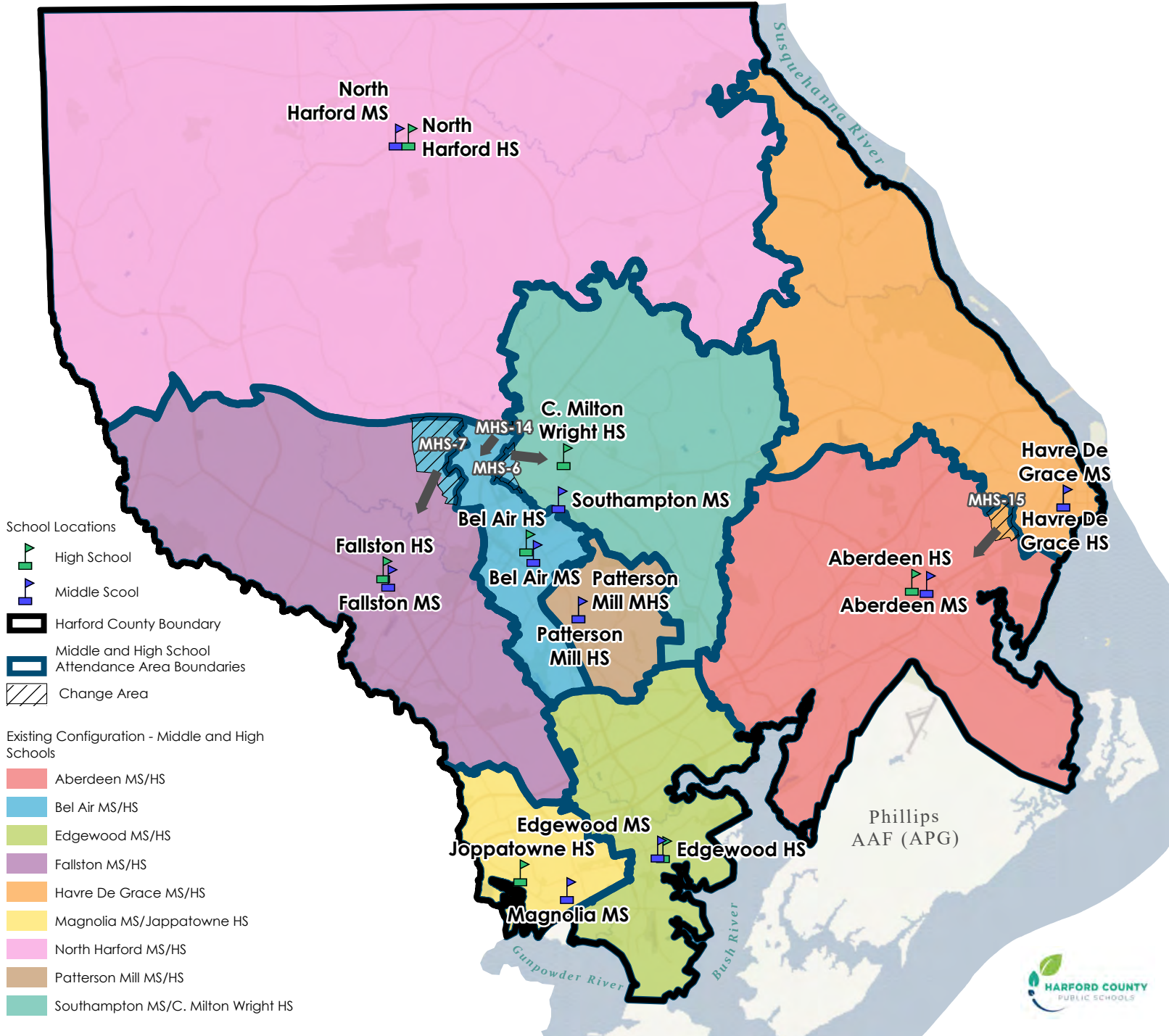
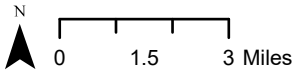





# District Overview - Approve Boundary Adjustment for Middle and High Schools (2022/2023 school Year)








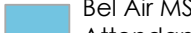

# Middle and High School Boundary Adjustments - Bel Air MS/HS

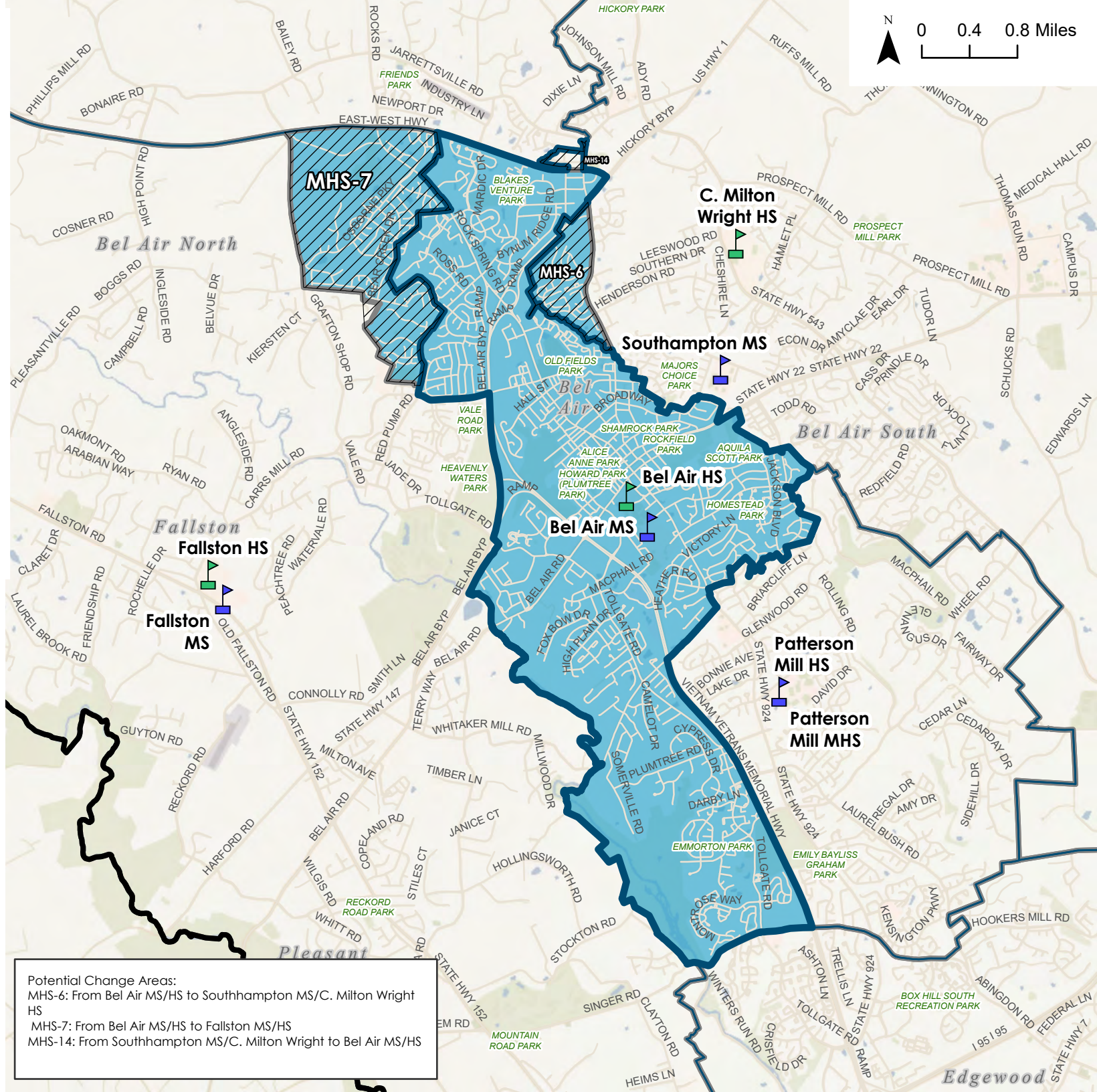
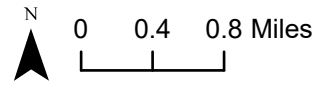
## School Location

-  High School
-  Middle School
-  District Boundary

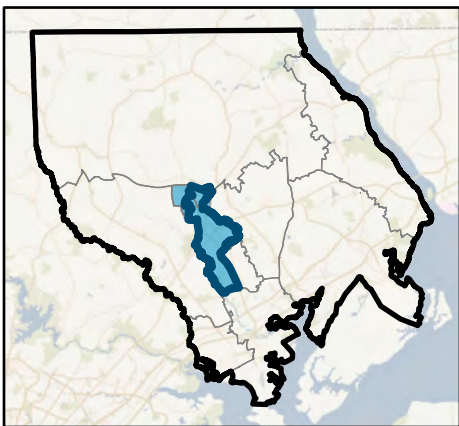
-  Middle and High School Boundary
-  Recommendation for Bel Air MS/HS
-  Change Area

## Existing Configuration - Middle and High Schools

-  Bel Air MS Current Attendance Area
-  Middle/High School Attendance Area Boundary Outline - Current Attendance Area



## Overview Map





Potential Change Areas:  
 MHS-6: From Bel Air MS/HS to Southhampton MS/C. Milton Wright HS  
 MHS-7: From Bel Air MS/HS to Fallston MS/HS  
 MHS-14: From Southhampton MS/C. Milton Wright to Bel Air MS/HS





# Middle and High School Boundary Adjustments - Fallston MS/HS

## School Location




-  High School
-  Middle School

-  District Boundary

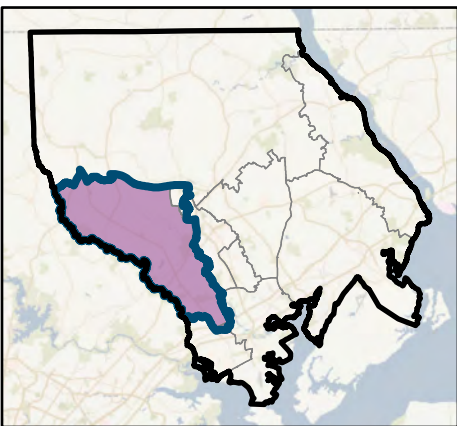
-  Middle and High School Attendance Area
-  Recommendation for Fallston MS/HS

-  Change Area

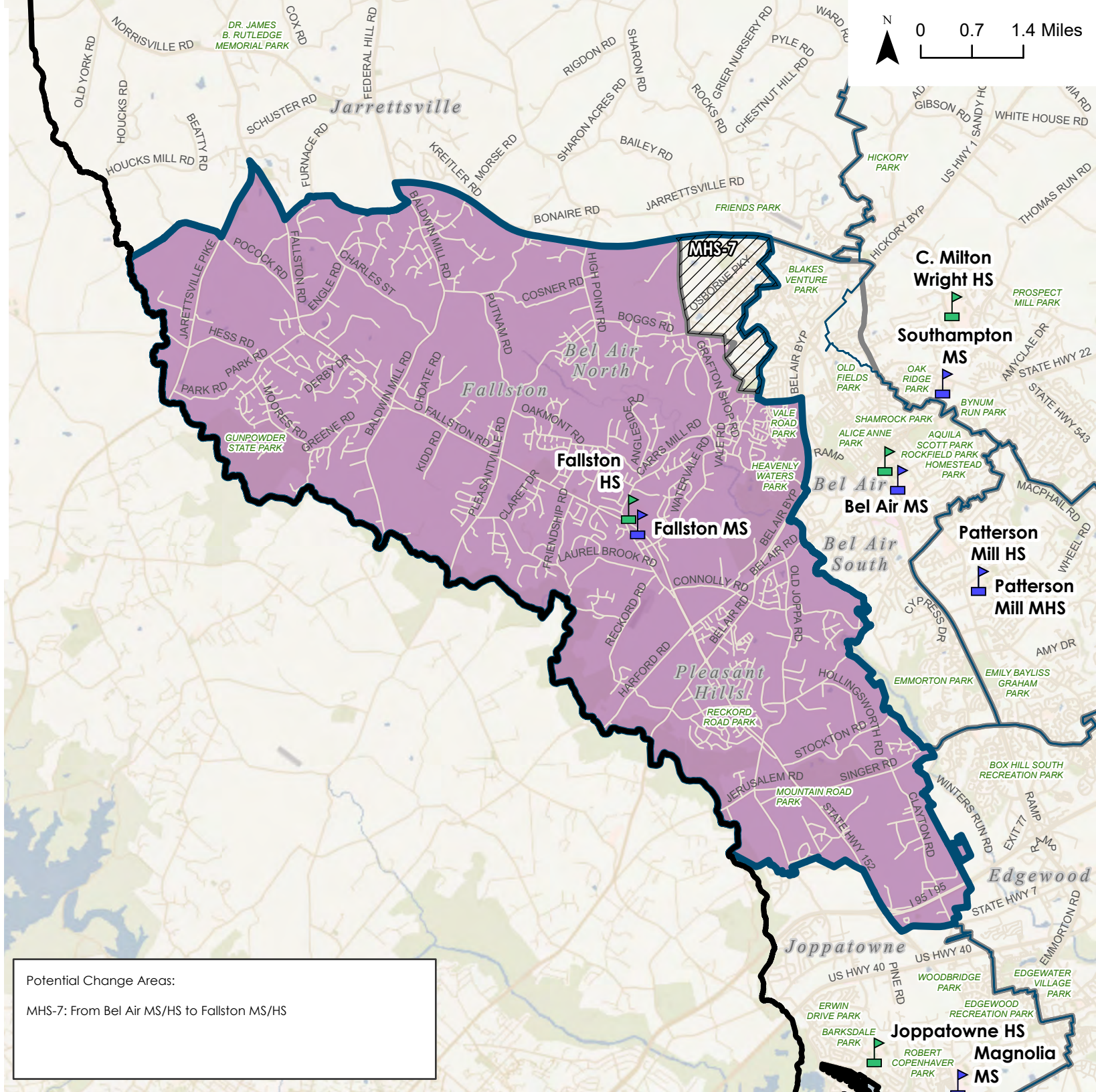
## Existing Configuration - Middle and High Schools

-  Fallston MS/HS Current Attendance Area
-  Middle/High School Attendance Area
-  Boundary Outline - Current Attendance Area

## Overview Map





Potential Change Areas:  
 MHS-7: From Bel Air MS/HS to Fallston MS/HS











# Middle and High School Boundary Adjustments - Havre De Grace MS/HS

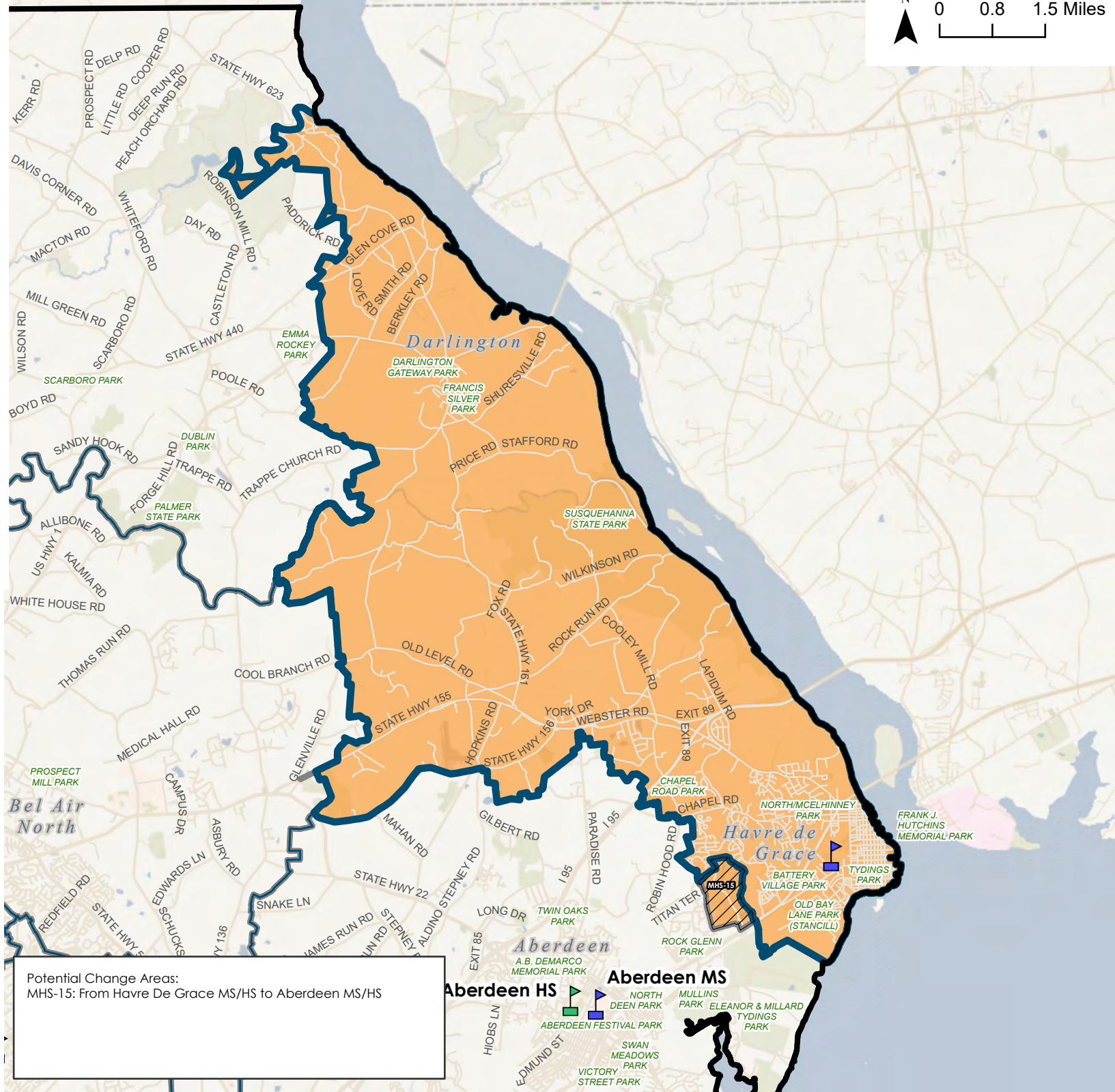
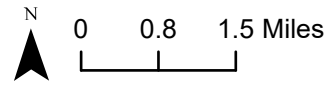
## School Location

-  High School
-  Middle School

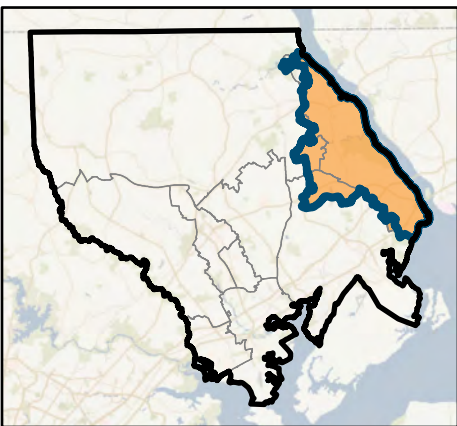
-  District Boundary
-  Middle and High School Boundary
-  Recommendation for Havre De Grace MS/HS
-  Change Area

## Existing Configuration - Middle and High Schools

-  Havre De Grace MS/HS Current Attendance Area
-  Middle/High School Attendance Area Boundary Outline - Current Attendance Area



## Overview Map






Potential Change Areas:  
MHS-15: From Havre De Grace MS/HS to Aberdeen MS/HS



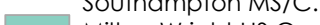

# Middle and High School Boundary Adjustments - Southampton MS/C. Milton Wright HS

## School Location

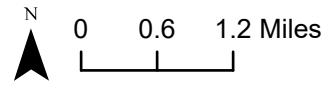
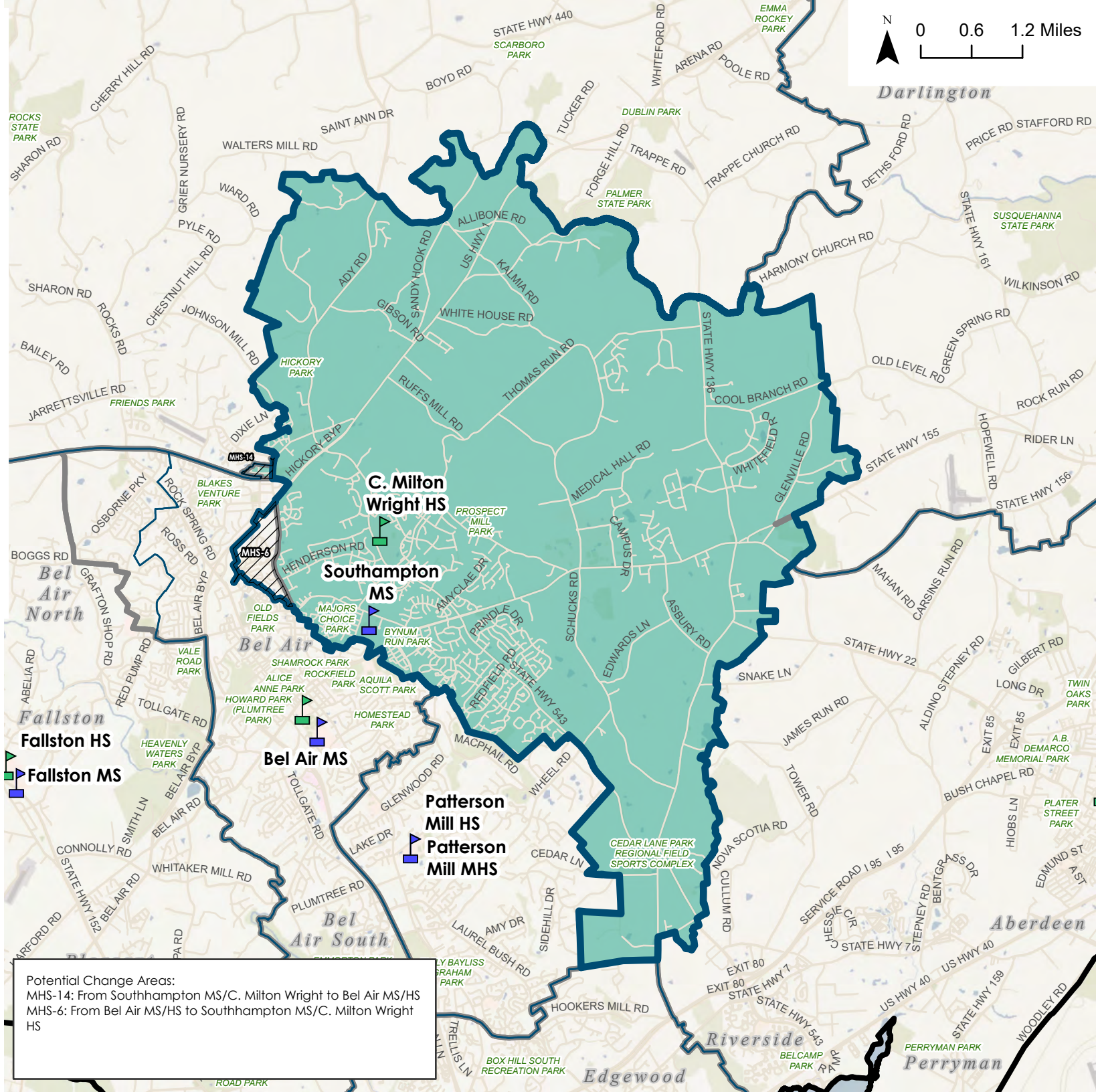
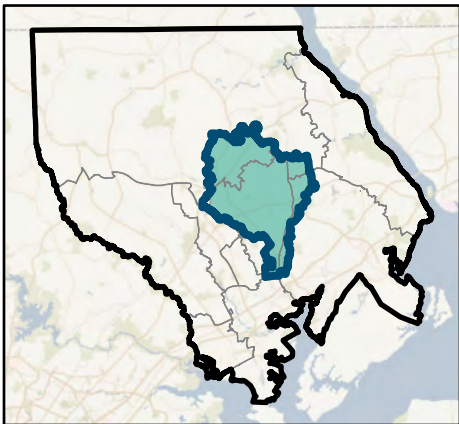
-  High School
-  Middle School
-  District Boundary

-  Middle and High School Boundary
-  Recommendation for Southampton MS/C. Milton Wright
-  Change Area

## Existing Configuration - Middle and High Schools

-  Southampton MS/C. Milton Wright HS Current Attendance Area
-  Middle/High School Boundary Outline - Current Attendance Area

## Overview Map



Potential Change Areas:  
 MHS-14: From Southampton MS/C. Milton Wright to Bel Air MS/HS  
 MHS-6: From Bel Air MS/HS to Southampton MS/C. Milton Wright HS